


Product datasheet

Anti-KLF10 antibody ab85970

1 References [画像数 1](#)

製品の概要

製品名	Anti-KLF10 antibody
製品の詳細	Rabbit polyclonal to KLF10
由来種	Rabbit
アプリケーション	適用あり: WB 適用なし: IP
種交差性	交差種: Human 交差が予測される動物種: Horse, Cow, Pig, Chimpanzee, Rhesus monkey, Gorilla, Orangutan, Other 
免疫原	Synthetic peptide, corresponding to a region between residues 430 and 480 of human KLF10 (NP_005646.1)
ポジティブ・コントロール	HeLa and 293T whole cell lysates.

製品の特性

製品の状態	Liquid
保存方法	Shipped at 4°C. Upon delivery aliquot and store at -20°C. Avoid freeze / thaw cycles.
バッファー	Preservative: 0.09% Sodium Azide Constituents: 0.1% BSA, Tris buffered saline
精製度	Immunogen affinity purified
特記事項(精製)	ab85970 was affinity purified using an epitope specific to KLF10 immobilized on solid support.
ポリ/モノ	ポリクローナル
アイソタイプ	IgG

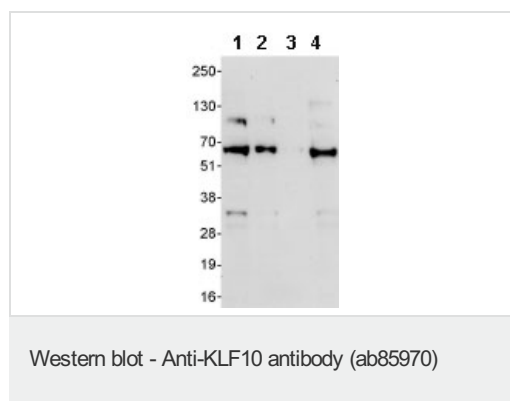
アプリケーション

Our [Abpromise guarantee](#) covers the use of **ab85970** in the following tested applications.

The application notes include recommended starting dilutions; optimal dilutions/concentrations should be determined by the end user.

アプリケーション	Abreviews	特記事項
WB		1/2000 - 1/10000. Predicted molecular weight: 53 kDa.
追加情報	Is unsuitable for IP.	
ターゲット情報		
機能	Transcriptional repressor which binds to the consensus sequence 5'-GGTGTG-3'. Plays a role in the regulation of the circadian clock; binds to the GC box sequence in the promoter of the core clock component ARTNL/BMAL1 and represses its transcriptional activity. Regulates the circadian expression of genes involved in lipogenesis, gluconeogenesis, and glycolysis in the liver. Represses the expression of PCK2, a rate-limiting step enzyme of gluconeogenesis (By similarity). May play a role in the cell cycle regulation.	
配列類似性	Belongs to the Sp1 C2H2-type zinc-finger protein family. Contains 3 C2H2-type zinc fingers.	
翻訳後修飾	Ubiquitinated; mediated by SIAH1 and leading to its subsequent proteasomal degradation.	
細胞内局在	Nucleus.	

## 画像



**All lanes** : Anti-KLF10 antibody (ab85970) at 0.04 µg/ml

**Lane 1** : HeLa whole cell lysate at 50 µg

**Lane 2** : HeLa whole cell lysate at 15 µg

**Lane 3** : HeLa whole cell lysate at 5 µg

**Lane 4** : 293T whole cell lysate at 50 µg

**Predicted band size:** 53 kDa

**Exposure time:** 30 seconds

**Please note:** All products are "FOR RESEARCH USE ONLY AND ARE NOT INTENDED FOR DIAGNOSTIC OR THERAPEUTIC USE"

## Our Abpromise to you: Quality guaranteed and expert technical support

- Replacement or refund for products not performing as stated on the datasheet
- Valid for 12 months from date of delivery
- Response to your inquiry within 24 hours
- We provide support in Chinese, English, French, German, Japanese and Spanish
- Extensive multi-media technical resources to help you

- We investigate all quality concerns to ensure our products perform to the highest standards

If the product does not perform as described on this datasheet, we will offer a refund or replacement. For full details of the Abpromise, please visit <http://www.abcam.co.jp/abpromise> or contact our technical team.

### **Terms and conditions**

---

- Guarantee only valid for products bought direct from Abcam or one of our authorized distributors