


Product datasheet

Anti-KIF4A antibody ab72412

画像数 2

製品の概要

製品名	Anti-KIF4A antibody
製品の詳細	Rabbit polyclonal to KIF4A
由来種	Rabbit
アプリケーション	適用あり: WB, IP
種交差性	交差種: Human 交差が予測される動物種: Horse, Cow, Pig, Rhesus monkey, Gorilla, Orangutan 
免疫原	Synthetic peptide corresponding to a region between residue 1182 and the C terminus (residue 1232) of human KIF4A (NP_036442.3)
ポジティブ・コントロール	HeLa and 293T whole cell lysates.

製品の特性

製品の状態	Liquid
保存方法	Shipped at 4°C. Upon delivery aliquot and store at -20°C. Avoid freeze / thaw cycles.
バッファー	Preservative: 0.09% Sodium Azide Constituents: 0.1% BSA, Tris buffered saline
精製度	Immunogen affinity purified
特記事項 (精製)	ab72412 was affinity purified using an epitope specific to KIF4A immobilized on solid support.
ポリ/モノ	ポリクローナル
アイソタイプ	IgG

アプリケーション

Our [Abpromise guarantee](#) covers the use of **ab72412** in the following tested applications.

The application notes include recommended starting dilutions; optimal dilutions/concentrations should be determined by the end user.

アプリケーション	Abreviews	特記事項
WB		1/2000 - 1/10000. Detects a band of approximately 170 kDa (predicted molecular weight: 140 kDa).

アプリケーション	Abreviews	特記事項
----------	-----------	------

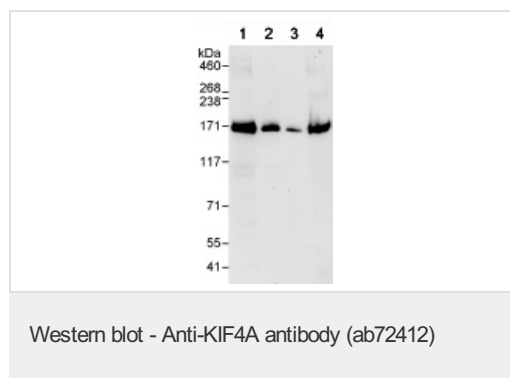
IP

Use at 2-5 µg/mg of lysate.

## ターゲット情報

<b>機能</b>	Motor protein that translocates PRC1 to the plus ends of interdigitating spindle microtubules during the metaphase to anaphase transition, an essential step for the formation of an organized central spindle midzone and midbody and for successful cytokinesis. May play a role in mitotic chromosomal positioning and bipolar spindle stabilization.
<b>組織特異性</b>	Highly expressed in hematopoietic tissues, fetal liver, spleen, thymus and adult thymus and bone marrow. Lower levels are found in heart, testis, kidney, colon and lung.
<b>配列類似性</b>	Belongs to the kinesin-like protein family. Chromokinesin subfamily. Contains 1 kinesin-motor domain.
<b>細胞内局在</b>	Nucleus matrix. Cytoplasm > cytoskeleton > spindle. Midbody. Chromosome. Not present in the nucleolus. In early mitosis, associated with the mitotic spindle, in anaphase, localized to the spindle midzone and, in telophase and cytokinesis, to the midbody. In late cytokinesis, found in the center of the midbody. Associated with chromosomes at all stages of mitosis.

## 画像



**All lanes :** Anti-KIF4A antibody (ab72412) at 0.04 µg/ml

**Lane 1 :** HeLa whole cell lysate at 50 µg

**Lane 2 :** HeLa whole cell lysate at 15 µg

**Lane 3 :** HeLa whole cell lysate at 5 µg

**Lane 4 :** 293T whole cell lysate at 50 µg

**Predicted band size:** 140 kDa

**Observed band size:** 170 kDa

**Exposure time:** 30 seconds



Immunoprecipitation - Anti-KIF4A antibody  
(ab72412)

Detection of KIF4A by Western Blot of  
Immunoprecipitate.

ab72412 at 1 µg/ml staining KIF4A in HeLa  
whole cell lysate immunoprecipitated using  
ab72412 at 3 µg/mg lysate (1 mg/IP; 20% of IP  
loaded).

Detection: Chemiluminescence with an  
exposure time of 10 seconds.

**Please note:** All products are "FOR RESEARCH USE ONLY AND ARE NOT INTENDED FOR DIAGNOSTIC OR THERAPEUTIC USE"

### Our Abpromise to you: Quality guaranteed and expert technical support

- Replacement or refund for products not performing as stated on the datasheet
- Valid for 12 months from date of delivery
- Response to your inquiry within 24 hours
- We provide support in Chinese, English, French, German, Japanese and Spanish
- Extensive multi-media technical resources to help you
- We investigate all quality concerns to ensure our products perform to the highest standards

If the product does not perform as described on this datasheet, we will offer a refund or replacement. For full details of the Abpromise, please visit <http://www.abcam.co.jp/abpromise> or contact our technical team.

### Terms and conditions

- Guarantee only valid for products bought direct from Abcam or one of our authorized distributors