

Product datasheet

Anti-KDEL antibody ab2898

★★★★☆ 1 Abreviews 2 References 画像数 4

製品の概要

製品名	Anti-KDEL antibody
製品の詳細	Rabbit polyclonal to KDEL
アプリケーション	適用あり: IP, WB, ICC/IF, IHC-P
種交差性	交差種: Mouse, Rat, Hamster, Human 非交差種: African green monkey
免疫原	Synthetic peptide corresponding to Rat KDEL aa 643-654. Sequence: TGEEDTSEKDEL Run BLAST with Run BLAST with
特記事項	This antibody can be used as an endoplasmic reticulum (ER) marker.

製品の特性

製品の状態	Liquid
保存方法	Shipped at 4°C. Store at +4°C short term (1-2 weeks). Upon delivery aliquot. Store at -20°C or -80°C. Avoid freeze / thaw cycle.
バッファー	Preservative: 0.05% Sodium azide Constituent: 99% PBS
精製度	IgG fraction
ポリ/モノ	ポリクローナル
アイソタイプ	IgG

アプリケーション

Our [Abpromise guarantee](#) covers the use of **ab2898** in the following tested applications.

The application notes include recommended starting dilutions; optimal dilutions/concentrations should be determined by the end user.

アプリケーション	Abreviews	特記事項
IP		Use at an assay dependent concentration.

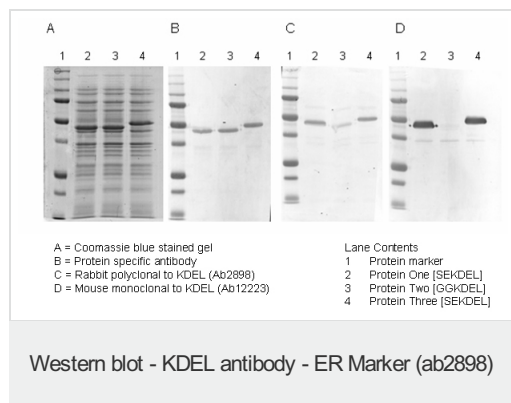
アプリケーション	Abreviews	特記事項
WB		Use a concentration of 16 µg/ml.
ICC/IF		Use at an assay dependent concentration.
IHC-P	★★★★☆	Use at an assay dependent concentration.

ターゲット情報

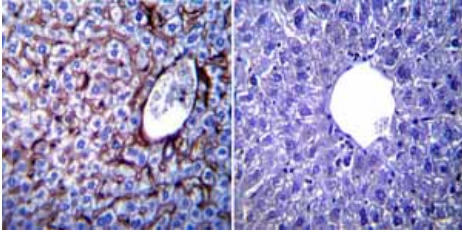
関連性 The sequence Lys-Asp-Glu-Leu (KDEL) or a closely related sequence, is present at the carboxy-terminus of soluble endoplasmic reticulum (ER) resident proteins and some membrane proteins. 78 and 94 kDa glucose regulated proteins (GRP 78) and GRP 94 respectively and protein disulfide isomerase (PDI) all share the C-terminal KDEL sequence. The presence of carboxy-terminal KDEL appears to be necessary for ER retention and appears to be sufficient to reduce the secretion of proteins from the ER. This retention is reported to be mediated by a KDEL receptor.

細胞内局在 Endoplasmic reticulum

画像

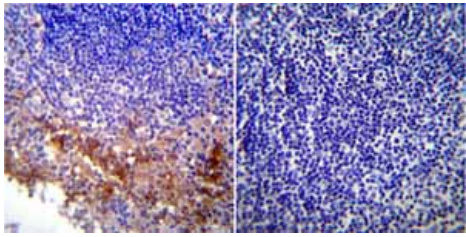


Three constructs were generated (denoted protein one to three). Proteins 1 and 2 end in SEKDEL as the C-terminal sequence. Protein two is an original construct which ends in GGKDEL. These were expressed and separated on a 12% SDS-PAGE, blotted to PVDF and blocked with 4% milk in TBS/0.1% tween. The replicates were then treated with either a specific antibody for the expressed protein (B), the KDEL antibody - ER Marker (ab2898) or KDEL antibody [10C3] - ER Marker (ab12223). A secondary antibody conjugated to alkaline phosphatase was used to detect the primary. The Coomassie stained gel indicates the location and expression levels of the three proteins. The specific antibody confirms the bands as the proteins of interest. KDEL antibody [10C3] - ER Marker (ab12223) recognizes proteins ending in the SEKDEL sequence and does not recognize the GGKDEL sequence as detected by KDEL antibody - ER Marker (ab2898).



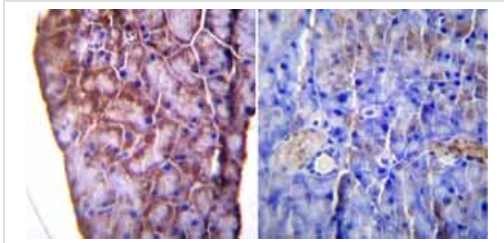
Immunohistochemistry (Formalin/PFA-fixed paraffin-embedded sections)-Anti-KDEL antibody - ER Marker(ab2898)

Immunohistochemistry was performed on normal biopsies of deparaffinized Mouse liver tissue. To expose target proteins heat induced antigen retrieval was performed using 10mM sodium citrate (pH6.0) buffer microwaved for 8-15 minutes. Following antigen retrieval tissues were blocked in 3% BSA-PBS for 30 minutes at room temperature. Tissues were then probed at a dilution of 1:100 with a rabbit polyclonal antibody recognizing KDEL ab2898 or without primary antibody (negative control) overnight at 4°C in a humidified chamber. Tissues were washed extensively with PBST and endogenous peroxidase activity was quenched with a peroxidase suppressor. Detection was performed using a biotin-conjugated secondary antibody and SA-HRP followed by colorimetric detection using DAB. Tissues were counterstained with hematoxylin and prepped for mounting.



Immunohistochemistry (Formalin/PFA-fixed paraffin-embedded sections)-Anti-KDEL antibody - ER Marker(ab2898)

Immunohistochemistry was performed on normal biopsies of deparaffinized Mouse lymph node tissue. To expose target proteins heat induced antigen retrieval was performed using 10mM sodium citrate (pH6.0) buffer microwaved for 8-15 minutes. Following antigen retrieval tissues were blocked in 3% BSA-PBS for 30 minutes at room temperature. Tissues were then probed at a dilution of 1:200 with a rabbit polyclonal antibody recognizing KDEL ab2898 or without primary antibody (negative control) overnight at 4°C in a humidified chamber. Tissues were washed extensively with PBST and endogenous peroxidase activity was quenched with a peroxidase suppressor. Detection was performed using a biotin-conjugated secondary antibody and SA-HRP followed by colorimetric detection using DAB. Tissues were counterstained with hematoxylin and prepped for mounting.



Immunohistochemistry (Formalin/PFA-fixed paraffin-embedded sections)-Anti-KDEL antibody - ER Marker(ab2898)

Immunohistochemistry was performed on normal biopsies of deparaffinized Mouse pancreas tissue. To expose target proteins heat induced antigen retrieval was performed using 10mM sodium citrate (pH6.0) buffer microwaved for 8-15 minutes. Following antigen retrieval tissues were blocked in 3% BSA-PBS for 30 minutes at room temperature. Tissues were then probed at a dilution of 1:100 with a rabbit polyclonal antibody recognizing KDEL ab2898 or without primary antibody (negative control) overnight at 4°C in a humidified chamber. Tissues were washed extensively with PBST and endogenous peroxidase activity was quenched with a peroxidase suppressor. Detection was performed using a biotin-conjugated secondary antibody and SA-HRP followed by colorimetric detection using DAB. Tissues were counterstained with hematoxylin and prepped for mounting.

Please note: All products are "FOR RESEARCH USE ONLY AND ARE NOT INTENDED FOR DIAGNOSTIC OR THERAPEUTIC USE"

Our Abpromise to you: Quality guaranteed and expert technical support

- Replacement or refund for products not performing as stated on the datasheet
- Valid for 12 months from date of delivery
- Response to your inquiry within 24 hours
- We provide support in Chinese, English, French, German, Japanese and Spanish
- Extensive multi-media technical resources to help you
- We investigate all quality concerns to ensure our products perform to the highest standards

If the product does not perform as described on this datasheet, we will offer a refund or replacement. For full details of the Abpromise, please visit <http://www.abcam.co.jp/abpromise> or contact our technical team.

Terms and conditions

- Guarantee only valid for products bought direct from Abcam or one of our authorized distributors