

## Product datasheet

# Anti-KCTD6 antibody ab62596

1 References [画像数 2](#)

### 製品の概要

製品名	Anti-KCTD6 antibody
製品の詳細	Rabbit polyclonal to KCTD6
由来種	Rabbit
アプリケーション	<b>適用あり:</b> WB, IHC-P, ELISA
種交差性	<b>交差種:</b> Human <b>交差が予測される動物種:</b> Mouse, Rat, Rabbit, Horse, Chicken, Guinea pig, Cow, Cat, Dog, Zebrafish
免疫原	Synthetic peptide: SMLGAMFGGD FPTTRDPQGN YFINRDGPLF RYVLNFLRTS ELTLPLDFKE, corresponding to a region within N terminal amino acids 36-85 of Human KCTD6 <a href="#">Run BLAST with ExPASy</a> <a href="#">Run BLAST with NCBI</a>
ポジティブ・コントロール	293T cell lysate and human lung tissue.

### 製品の特性

製品の状態	Liquid
保存方法	Shipped at 4°C. Upon delivery aliquot and store at -20°C or -80°C. Avoid repeated freeze / thaw cycles.
バッファー	Preservative: None Constituents: 2% Sucrose, PBS
精製度	Protein A purified
ポリ/モノ	ポリクローナル
アイソタイプ	IgG

### アプリケーション

Our [Abpromise guarantee](#) covers the use of **ab62596** in the following tested applications.

The application notes include recommended starting dilutions; optimal dilutions/concentrations should be determined by the end user.

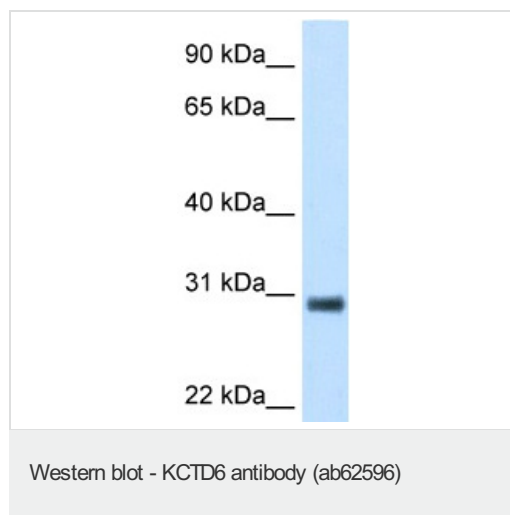
アプリ ケーション	Abreviews	特記事項
WB		Use a concentration of 5 µg/ml. Detects a band of approximately 28 kDa (predicted molecular weight: 28 kDa). Good results were obtained when blocked with 5% non-fat dry milk in 0.05% PBS-T.
IHC-P		Use a concentration of 16 µg/ml.
ELISA		Use at an assay dependent concentration. ELISA titre using peptide based assay: 1/312500.

## ターゲット情報

### 配列類似性

Contains 1 BTB (POZ) domain.

## 画像



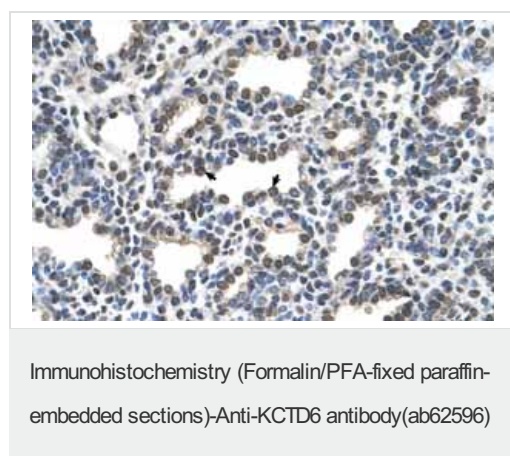
Anti-KCTD6 antibody (ab62596) at 5 µg/ml +  
293T cell lysate at 10 µg

### Secondary

HRP conjugated anti-Rabbit IgG at 1/50000  
dilution

**Predicted band size:** 28 kDa

**Observed band size:** 28 kDa



Immunohistochemistry (Formalin/PFA-fixed  
paraffin-embedded sections) analysis of  
human lung tissue labelling KCTD6 with  
ab62596 at 16µg/ml. Arrows indicate  
positively labelled alveolar cells. Magnification:  
400X.

**Please note:** All products are "FOR RESEARCH USE ONLY AND ARE NOT INTENDED FOR DIAGNOSTIC OR THERAPEUTIC USE"

## **Our Abpromise to you: Quality guaranteed and expert technical support**

---

- Replacement or refund for products not performing as stated on the datasheet
- Valid for 12 months from date of delivery
- Response to your inquiry within 24 hours
  
- We provide support in Chinese, English, French, German, Japanese and Spanish
- Extensive multi-media technical resources to help you
- We investigate all quality concerns to ensure our products perform to the highest standards

If the product does not perform as described on this datasheet, we will offer a refund or replacement. For full details of the Abpromise, please visit <http://www.abcam.co.jp/abpromise> or contact our technical team.

## **Terms and conditions**

---

- Guarantee only valid for products bought direct from Abcam or one of our authorized distributors