


## Product datasheet

# Anti-KCC4 antibody ab96424

### 画像数 1

#### 製品の概要

製品名	Anti-KCC4 antibody
製品の詳細	Rabbit polyclonal to KCC4
アプリケーション	適用あり: WB
種交差性	交差種: Human 交差が予測される動物種: Mouse, Rabbit 
免疫原	Recombinant fragment, corresponding to a region within amino acids 845-1056 of Human KCC4 (NP_006589).
ポジティブ・コントロール	A431, H1299, HepG2 and Raji whole cell lysates

#### 法規制情報

### 医薬用外毒物

#### 製品の特性

製品の状態	Liquid
保存方法	Shipped at 4°C. Upon delivery aliquot and store at -20°C or -80°C. Avoid repeated freeze / thaw cycles.
バッファー	Preservative: 0.01% Thimerosal (merthiolate) Constituents: 10% Glycerol, 0.1M Tris, 0.1M Glycine, pH 7.0
精製度	Protein A purified
ポリ/モノ	ポリクローナル
アイソタイプ	IgG

#### アプリケーション

Our [Abpromise guarantee](#) covers the use of **ab96424** in the following tested applications.

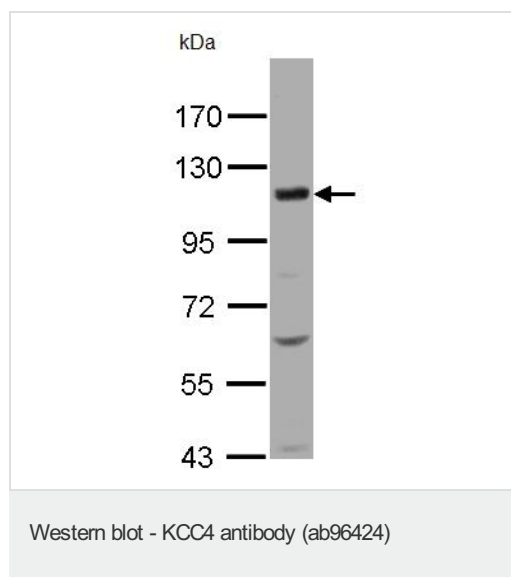
The application notes include recommended starting dilutions; optimal dilutions/concentrations should be determined by the end user.

アプリケーション	Abreviews	特記事項
WB		1/500 - 1/3000. Predicted molecular weight: 119 kDa.

## ターゲット情報

<b>機能</b>	Mediates electroneutral potassium-chloride cotransport when activated by cell swelling. May mediate K(+) uptake into Deiters' cells in the cochlea and contribute to K(+) recycling in the inner ear. Important for the survival of cochlear outer and inner hair cells and the maintenance of the organ of Corti. May be required for basolateral Cl(-) extrusion in the kidney and contribute to renal acidification.
<b>組織特異性</b>	Detected in muscle, brain, lung, heart and kidney.
<b>配列類似性</b>	Belongs to the SLC12A transporter family.
<b>細胞内局在</b>	Cell membrane.

## 画像



Anti-KCC4 antibody (ab96424) at 1/500 dilution + H1299 whole cell lysate at 30 µg

**Predicted band size : 119 kDa**

**Please note:** All products are "FOR RESEARCH USE ONLY AND ARE NOT INTENDED FOR DIAGNOSTIC OR THERAPEUTIC USE"

## Our Abpromise to you: Quality guaranteed and expert technical support

- Replacement or refund for products not performing as stated on the datasheet
- Valid for 12 months from date of delivery
- Response to your inquiry within 24 hours
- We provide support in Chinese, English, French, German, Japanese and Spanish
- Extensive multi-media technical resources to help you
- We investigate all quality concerns to ensure our products perform to the highest standards

If the product does not perform as described on this datasheet, we will offer a refund or replacement. For full details of the Abpromise,

please visit <http://www.abcam.co.jp/abpromise> or contact our technical team.

## Terms and conditions

---

- Guarantee only valid for products bought direct from Abcam or one of our authorized distributors