


Product datasheet

Anti-KAT8 / MYST1 / MOF antibody ab95145

画像数 1

製品の概要

| | |
|--------------|--|
| 製品名 | Anti-KAT8 / MYST1 / MOF antibody |
| 製品の詳細 | Rabbit polyclonal to KAT8 / MYST1 / MOF |
| アプリケーション | 適用あり: IHC-P |
| 種交差性 | 交差種: Human 交差が予測される動物種: Cow, Chimpanzee, Rhesus monkey, Gorilla, Orangutan, Bat, Elephant  |
| 免疫原 | Synthetic peptide, corresponding to a region within amino acids 1-50 of Human KAT8/ MYST1/ MOF (BAB13924.1). |
| ポジティブ・コントロール | Human breast Carcinoma |

製品の特性

| | |
|--------|---|
| 製品の状態 | Liquid |
| 保存方法 | Shipped at 4°C. Upon delivery aliquot and store at -20°C. Avoid freeze / thaw cycles. |
| バッファー | Preservative: 0.09% Sodium Azide Constituents: 0.1% BSA, Tris buffered saline |
| 精製度 | Immunogen affinity purified |
| ポリ/モノ | ポリクローナル |
| アイソタイプ | IgG |

アプリケーション

Our [Abpromise guarantee](#) covers the use of **ab95145** in the following tested applications.

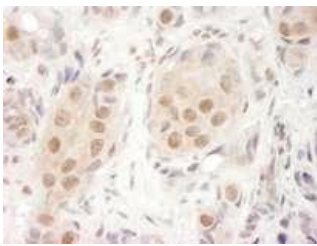
The application notes include recommended starting dilutions; optimal dilutions/concentrations should be determined by the end user.

| アプリケーション | Abreviews | 特記事項 |
|----------|-----------|---|
| IHC-P | | 1/100 - 1/500. Antigen retrieval is not essential but may optimise staining. Epitope exposure is recommended. Epitope exposure with tris-EDTA pH9.0 buffer will enhance staining. |

ターゲット情報

| | |
|-------|---|
| 機能 | Histone acetyltransferase which may be involved in transcriptional activation. May influence the function of ATM. |
| 配列類似性 | Belongs to the MYST (SAS/MOZ) family. Contains 1 C2HC-type zinc finger. Contains 1 chromo domain. |
| 細胞内局在 | Nucleus. |

画像



ab95145, at 1/250 dilution, staining KAT8 / MYST1 / MOF in formalin-fixed, paraffin-embedded Human breast carcinoma by Immunohistochemistry using DAB detection. Epitope retrieval was performed.

Immunohistochemistry (Formalin/PFA-fixed paraffin-embedded sections) - KAT8 / MYST1 / MOF antibody (ab95145)

Please note: All products are "FOR RESEARCH USE ONLY AND ARE NOT INTENDED FOR DIAGNOSTIC OR THERAPEUTIC USE"

Our Abpromise to you: Quality guaranteed and expert technical support

- Replacement or refund for products not performing as stated on the datasheet
- Valid for 12 months from date of delivery
- Response to your inquiry within 24 hours
- We provide support in Chinese, English, French, German, Japanese and Spanish
- Extensive multi-media technical resources to help you
- We investigate all quality concerns to ensure our products perform to the highest standards

If the product does not perform as described on this datasheet, we will offer a refund or replacement. For full details of the Abpromise, please visit <http://www.abcam.co.jp/abpromise> or contact our technical team.

Terms and conditions

- Guarantee only valid for products bought direct from Abcam or one of our authorized distributors