

Product datasheet

Anti-Integrin beta 4 antibody [M126] ab29042

★★★★★ 4 Abreviews 8 References 画像数 3

製品の概要

製品名	Anti-Integrin beta 4 antibody [M126]
製品の詳細	Mouse monoclonal [M126] to Integrin beta 4
アプリケーション	適用あり: ELISA, WB, ICC, Flow Cyt, ICC/IF
種交差性	交差種: Mouse, Rat, Dog, Human
免疫原	recombinant protein containing amino acid residues in the cytoplasmic region of human integrin beta 4.
ポジティブ・コントロール	A431 cell lysate. 804G cells

製品の特性

製品の状態	Liquid
保存方法	Shipped at 4°C. Store at +4°C short term (1-2 weeks). Upon delivery aliquot. Store at -20°C. Avoid freeze / thaw cycle.
バッファー	Preservative: 0.05% Sodium Azide Constituents: 50% Glycerol, PBS, 1mg/ml BSA
精製度	Protein A purified
特記事項(精製)	protein A chromatography.
ポリ/モノ	モノクローナル
クローン名	M126
アイソタイプ	IgG1

アプリケーション

Our [Abpromise guarantee](#) covers the use of **ab29042** in the following tested applications.

The application notes include recommended starting dilutions; optimal dilutions/concentrations should be determined by the end user.

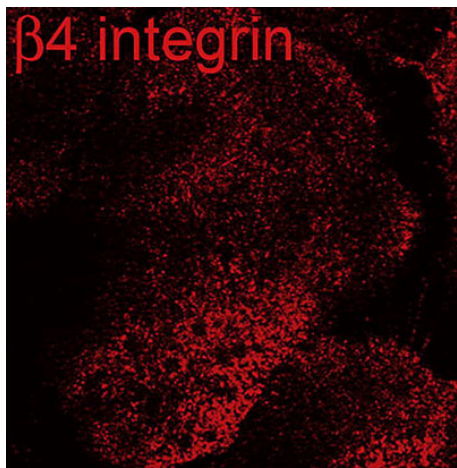
アプリケーション	Abreviews	特記事項
ELISA		1/2000.

アプリケーション	Abreviews	特記事項
WB	★★★★★	1/1000. Predicted molecular weight: 202 kDa. In 5% non fat milk, PBS, 0.04% Tween 20 for 1 hour at room temperature.
ICC		1/250.
Flow Cyt		1/100. ab170190 -Mouse monoclonal IgG1, is suitable for use as an isotype control with this antibody.
ICC/IF	★★★★☆☆	Use at an assay dependent concentration. PubMed: 21042878

ターゲット情報

機能	Integrin alpha-6/beta-4 is a receptor for laminin. It plays a critical structural role in the hemidesmosome of epithelial cells.
組織特異性	Integrin alpha-6/beta-4 is predominantly expressed by epithelia. Isoform beta-4D is also expressed in colon and placenta. Isoform beta-4E is also expressed in epidermis, lung, duodenum, heart, spleen and stomach.
関連疾患	Defects in ITGB4 are a cause of epidermolysis bullosa letalis with pyloric atresia (EB-PA) [MIM:226730]; also known as junctional epidermolysis bullosa with pyloric atresia (PA-JEB) or aplasia cutis congenita with gastrointestinal atresia. EB-PA is an autosomal recessive, frequently lethal, epidermolysis bullosa with variable involvement of skin, nails, mucosa, and with variable effects on the digestive system. It is characterized by mucocutaneous fragility, aplasia cutis congenita, and gastrointestinal atresia, which most commonly affects the pylorus. Pyloric atresia is a primary manifestation rather than a scarring process secondary to epidermolysis bullosa. Defects in ITGB4 are a cause of generalized atrophic benign epidermolysis bullosa (GABEB) [MIM:226650]. GABEB is a non-lethal, adult form of junctional epidermolysis bullosa characterized by life-long blistering of the skin, associated with hair and tooth abnormalities.
配列類似性	Belongs to the integrin beta chain family. Contains 1 Calx-beta domain. Contains 4 fibronectin type-III domains. Contains 1 PSI domain. Contains 1 VWFA domain.
ドメイン	The fibronectin type-III-like domains bind BPAG1 and plectin and probably also recruit BP230.
細胞内局在	Membrane.

画像

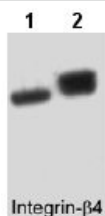


Immunocytochemistry/ Immunofluorescence - Anti-Integrin beta 4 antibody [M126] (ab29042)

Image from Hiroyasu S et al., Am J Pathol., 182, 828-40. Fig 1.; doi: 10.1016/j.ajpath.2012.11.029.

Immunofluorescence analysis of rat 804G cells, staining Integrin beta 4 with [ab29042](#).

Cells were fixed in 4% formaldehyde in PBS for 8 minutes, washed thoroughly in PBS, and permeabilized in 0.1% Triton X-100 in PBS for 10 minutes. Samples were incubated with primary antibody at 37°C for 1 hour. The cells on coverslips were washed with PBS, and AlexaFluor®597-conjugated secondary antibodies were applied for 1 hour at 37°C.



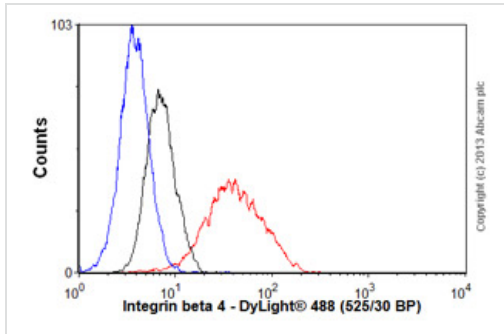
Western blot - Integrin beta 4 antibody [M126] (ab29042)

All lanes : Anti-Integrin beta 4 antibody [M126] (ab29042)

Lane 1 : A431 (25 µg/lane) serum starved overnight

Lane 2 : A431 (25 µg/lane) serum treated with pervanadate (1 mM) for 30 min

Predicted band size : 202 kDa



Flow Cytometry - Anti-Integrin beta 4 antibody
[M126] (ab29042)

Overlay histogram showing A431 cells stained with ab29042 (red line). The cells were fixed with 80% methanol (5 min) and then permeabilized with 0.1% PBS-Tween for 20 min. The cells were then incubated in 1x PBS / 10% normal goat serum (ab7481) / 0.3M glycine to block non-specific protein-protein interactions followed by the antibody (ab29042, 1/100 dilution) for 30 min at 22°C. The secondary antibody used was a goat anti-mouse DyLight® 488 (IgG; H+L) (ab96879) at 1/500 dilution for 30 min at 22°C. Isotype control antibody (black line) was mouse IgG1 [ICIGG1] (ab91353, 1µg/1x10⁶ cells) used under the same conditions. Unlabelled sample (blue line) was also used as a control. Acquisition of >5,000 events were collected using a 20mW Argon ion laser (488nm) and 525/30 bandpass filter.

Please note: All products are "FOR RESEARCH USE ONLY AND ARE NOT INTENDED FOR DIAGNOSTIC OR THERAPEUTIC USE"

Our Abpromise to you: Quality guaranteed and expert technical support

- Replacement or refund for products not performing as stated on the datasheet
- Valid for 12 months from date of delivery
- Response to your inquiry within 24 hours
- We provide support in Chinese, English, French, German, Japanese and Spanish
- Extensive multi-media technical resources to help you
- We investigate all quality concerns to ensure our products perform to the highest standards

If the product does not perform as described on this datasheet, we will offer a refund or replacement. For full details of the Abpromise, please visit <http://www.abcam.co.jp/abpromise> or contact our technical team.

Terms and conditions

- Guarantee only valid for products bought direct from Abcam or one of our authorized distributors