

Product datasheet

Anti-IPL-1/STK13/Aurora C antibody [EP1011Y] ab46783

リコンビナント RabMAb®

1 Abreviews [画像数 1](#)

製品の概要

製品名	Anti-IPL-1/STK13/Aurora C antibody [EP1011Y]
製品の詳細	Rabbit monoclonal [EP1011Y] to IPL-1/STK13/Aurora C
アプリケーション	適用あり: WB 適用なし: ICC/IF
種交差性	交差種: Human
免疫原	A synthetic peptide corresponding to residues near the N-terminus of human Aurora C.
ポジティブ・コントロール	HepG2 cell lysate
特記事項	This product is a recombinant rabbit monoclonal antibody. Our RabMAb® technology is a patented hybridoma-based technology for making rabbit monoclonal antibodies. For details on our patents, please refer to RabMAb® patents

製品の特性

製品の状態	Liquid
保存方法	Shipped at 4°C. Store at -20°C. Stable for 12 months at -20°C.
バッファー	PBS 49%, Sodium azide 0.01%, Glycerol 50%, BSA 0.05%
精製度	Tissue culture supernatant
ポリ/モノ	モノクローナル
クローン名	EP1011Y
アイソタイプ	IgG

アプリケーション

Our [Abpromise guarantee](#) covers the use of **ab46783** in the following tested applications.

The application notes include recommended starting dilutions; optimal dilutions/concentrations should be determined by the end user.

アプリケーション	Abreviews	特記事項
----------	-----------	------

WB

追加情報

WB: 1/1000. Detects a band of approximately 36 kDa (predicted molecular weight: 36 kDa).

This antibody does not seem to be suitable for ICC/IF (please see abreview).

Not yet tested in other applications.

Optimal dilutions/concentrations should be determined by the end user.

ターゲット情報

機能

May play a part in organizing microtubules in relation to the function of the centrosome/spindle pole during mitosis. May also contribute to the regulation of chromosome segregation and cytokinesis.

組織特異性

Isoform 1 and isoform 2 are expressed in testis. Elevated expression levels were seen only in a subset of cancer cells such as HepG2, HuH7 and HeLa cells. Expression is maximum at M phase.

関連疾患

Defects in AURKC are the cause of male infertility with large-headed multiflagellar polyploid spermatozoa (MIMPS) [MIM:243060]; also known as infertility associated with multi-tailed spermatozoa and excessive DNA.

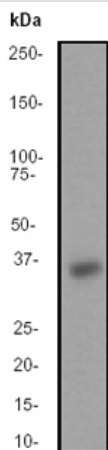
配列類似性

Belongs to the protein kinase superfamily. Ser/Thr protein kinase family. Aurora subfamily. Contains 1 protein kinase domain.

細胞内局在

Chromosome. Cytoplasm > cytoskeleton > spindle. Distributes in the condensed chromosomes during prophase to metaphase. After entering anaphase, there is a dissociation from separated chromosomes and a redistribution to midzone microtubules, and finally remains in the midbody during cytokinesis.

画像



Anti-IPL-1/STK13/Aurora C antibody
[EP1011Y] (ab46783) at 1/1000 dilution +
HepG2 lysate at 10 µg

Secondary

goat anti rabbit HRP at 2000

Predicted band size : 36 kDa

Observed band size : 36 kDa

Western blot - IPL-1/STK13/Aurora C antibody
[EP1011Y] - Aminoterminal end (ab46783)

Please note: All products are "FOR RESEARCH USE ONLY AND ARE NOT INTENDED FOR DIAGNOSTIC OR THERAPEUTIC USE"

Our Abpromise to you: Quality guaranteed and expert technical support

- Replacement or refund for products not performing as stated on the datasheet
- Valid for 12 months from date of delivery
- Response to your inquiry within 24 hours
- We provide support in Chinese, English, French, German, Japanese and Spanish
- Extensive multi-media technical resources to help you
- We investigate all quality concerns to ensure our products perform to the highest standards

If the product does not perform as described on this datasheet, we will offer a refund or replacement. For full details of the Abpromise, please visit <http://www.abcam.co.jp/abpromise> or contact our technical team.

Terms and conditions

- Guarantee only valid for products bought direct from Abcam or one of our authorized distributors