

Product datasheet

Anti-IMMP2L antibody ab103326

画像数 2

製品の概要

製品名	Anti-IMMP2L antibody
製品の詳細	Rabbit polyclonal to IMMP2L
アプリケーション	適用あり: WB, IHC-P
種交差性	交差種: Rat, Human
免疫原	Synthetic peptide conjugated to KLH, corresponding to a region within internal sequence amino acids 88-117 of Human IMMP2L.
ポジティブ・コントロール	Jurkat cell line; Rat lung tissue

製品の特性

製品の状態	Liquid
保存方法	Shipped at 4°C. Store at 4°C (up to 6 months). Store at -20°C long term.
バッファー	Preservative: 0.09% Sodium Azide Constituents: PBS
精製度	Immunogen affinity purified
特記事項 (精製)	ab103326 is purified through a protein A column, followed by peptide affinity purification.
ポリモノ	ポリクローナル
アイソタイプ	IgG

アプリケーション

Our [Abpromise guarantee](#) covers the use of **ab103326** in the following tested applications.

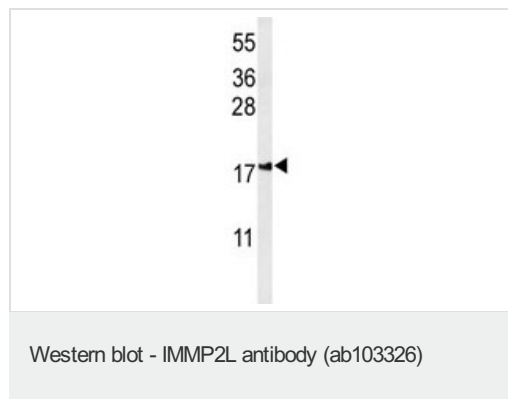
The application notes include recommended starting dilutions; optimal dilutions/concentrations should be determined by the end user.

アプリケーション	Abreviews	特記事項
WB		1/100 - 1/500. Predicted molecular weight: 20 kDa.
IHC-P		1/50 - 1/100. Perform heat mediated antigen retrieval with citrate buffer pH 6 before commencing with IHC staining protocol.

ターゲット情報

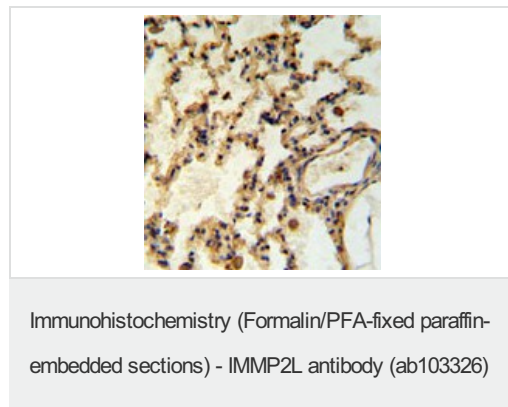
関連性	The mitochondrial inner membrane peptidase (IMP) complex generates mature, active proteins in the mitochondrial intermembrane space by proteolytically removing the mitochondrial targeting presequence of nuclear-encoded proteins. IMMPL1 and IMMPL2 are the catalytic subunits of the IMP complex.
細胞内局在	Mitochondrion inner membrane; Single pass membrane protein.

画像



Anti-IMMP2L antibody (ab103326) at 1/100 dilution + Jurkat cell lysate at 35 µg

Predicted band size : 20 kDa



ab103326, at 1/50 dilution, staining IMMP2L in formalin-fixed, paraffin-embedded rat lung tissue by Immunohistochemistry using a peroxidase conjugated secondary antibody and DAB staining.

Please note: All products are "FOR RESEARCH USE ONLY AND ARE NOT INTENDED FOR DIAGNOSTIC OR THERAPEUTIC USE"

Our Abpromise to you: Quality guaranteed and expert technical support

- Replacement or refund for products not performing as stated on the datasheet
- Valid for 12 months from date of delivery
- Response to your inquiry within 24 hours
- We provide support in Chinese, English, French, German, Japanese and Spanish
- Extensive multi-media technical resources to help you
- We investigate all quality concerns to ensure our products perform to the highest standards

If the product does not perform as described on this datasheet, we will offer a refund or replacement. For full details of the Abpromise,

please visit <http://www.abcam.co.jp/abpromise> or contact our technical team.

Terms and conditions

- Guarantee only valid for products bought direct from Abcam or one of our authorized distributors