

Product datasheet

Anti-IL6R antibody [B-R6] (FITC) ab27321

画像数 1

製品の概要

製品名	Anti-IL6R antibody [B-R6] (FITC)
製品の詳細	Mouse monoclonal [B-R6] to IL6R (FITC)
由来種	Mouse
標識	FITC. Ex: 493nm, Em: 528nm
特異性	This antibody recognises the Interleukin 6 Receptor alpha subunit (IL6 Ra, IL6R).
アプリケーション	適用あり: Flow Cyt, IHC-Fr, WB
種交差性	交差種: Human
免疫原	Full length Human IL6R transfected with CHO cell line.
ポジティブ・コントロール	Cells from U266 cell line.

製品の特性

製品の状態	Liquid
保存方法	Shipped at 4°C. Store at +4°C.
バッファー	Preservative: 0.1% Sodium Azide Constituents: 5% BSA, PBS
精製度	Ion Exchange Chromatography
ポリモノ	モノクローナル
クローン名	B-R6
ミエローマ	x63-Ag8.653
アイソタイプ	IgG1

アプリケーション

Our [Abpromise guarantee](#) covers the use of **ab27321** in the following tested applications.

The application notes include recommended starting dilutions; optimal dilutions/concentrations should be determined by the end user.

アプリケーション	Abreviews	特記事項
Flow Cyt		

アプリケーション	Abreviews	特記事項
----------	-----------	------

IHC-Fr

WB

追加情報

Flow Cyt: Use Neat: 10 μ l for 10⁶ cells or 100 μ l whole blood.
 IHC-Fr: Use at an assay dependent dilution (PMID 19658188).
 WB: Use at an assay dependent dilution (PMID 19658188).

Not yet tested in other applications.
 Optimal dilutions/concentrations should be determined by the end user.

ターゲット情報

機能

Part of the receptor for interleukin 6. Binds to IL6 with low affinity, but does not transduce a signal. Signal activation necessitate an association with IL6ST. Activation may lead to the regulation of the immune response, acute-phase reactions and hematopoiesis.
 Low concentration of a soluble form of IL6 receptor acts as an agonist of IL6 activity.

組織特異性

Isoform 2 is expressed in peripheral blood mononuclear cells and weakly found in urine and serum.

配列類似性

Belongs to the type I cytokine receptor family. Type 3 subfamily.
 Contains 1 fibronectin type-III domain.
 Contains 1 Ig-like C2-type (immunoglobulin-like) domain.

ドメイン

The two fibronectin type-III-like domains, contained in the N-terminal part, form together a cytokine-binding domain.
 The WSXWS motif appears to be necessary for proper protein folding and thereby efficient intracellular transport and cell-surface receptor binding.

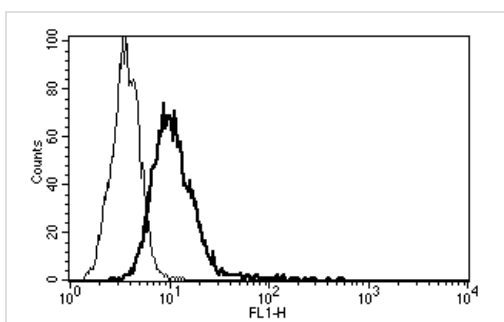
翻訳後修飾

A short soluble form may also be released from the membrane by proteolysis.

細胞内局在

Secreted and Basolateral cell membrane.

画像



ab27321 at 10 μ l/10⁶ cells staining IL6R in U266 cell line by Flow Cytometry.

Flow Cytometry - Anti-IL6R antibody [B-R6] (FITC)
 (ab27321)

Our Abpromise to you: Quality guaranteed and expert technical support

- Replacement or refund for products not performing as stated on the datasheet
- Valid for 12 months from date of delivery
- Response to your inquiry within 24 hours

- We provide support in Chinese, English, French, German, Japanese and Spanish
- Extensive multi-media technical resources to help you
- We investigate all quality concerns to ensure our products perform to the highest standards

If the product does not perform as described on this datasheet, we will offer a refund or replacement. For full details of the Abpromise, please visit <http://www.abcam.co.jp/abpromise> or contact our technical team.

Terms and conditions

- Guarantee only valid for products bought direct from Abcam or one of our authorized distributors