


Product datasheet

Anti-IL36 gamma antibody ab116281

画像数 1

製品の概要

| | |
|--------------|---|
| 製品名 | Anti-IL36 gamma antibody |
| 製品の詳細 | Rabbit polyclonal to IL36 gamma |
| 由来種 | Rabbit |
| アプリケーション | 適用あり: WB |
| 種交差性 | 交差種: Human 交差が予測される動物種: Chimpanzee, Gorilla  |
| 免疫原 | Synthetic peptide corresponding to Human IL36 gamma aa 100 to the C-terminus conjugated to Keyhole Limpet Haemocyanin (KLH). Database link: Q9NZH8 |
| ポジティブ・コントロール | This antibody gave a positive signal in Human Tonsil tissue lysate. |

製品の特性

| | |
|---------|--|
| 製品の状態 | Liquid |
| 保存方法 | Shipped at 4°C. Store at +4°C short term (1-2 weeks). Upon delivery aliquot. Store at -20°C or -80°C. Avoid freeze / thaw cycle. |
| バッファー | pH: 7.40 Preservative: 0.02% Sodium azide Constituent: PBS Batches of this product that have a concentration < 1mg/ml may have BSA added as a stabilising agent. If you would like information about the formulation of a specific lot, please contact our scientific support team who will be happy to help. |
| 精製度 | Immunogen affinity purified |
| ポリクローナル | ポリクローナル |
| アイソタイプ | IgG |

アプリケーション

Our [Abpromise guarantee](#) covers the use of **ab116281** in the following tested applications.

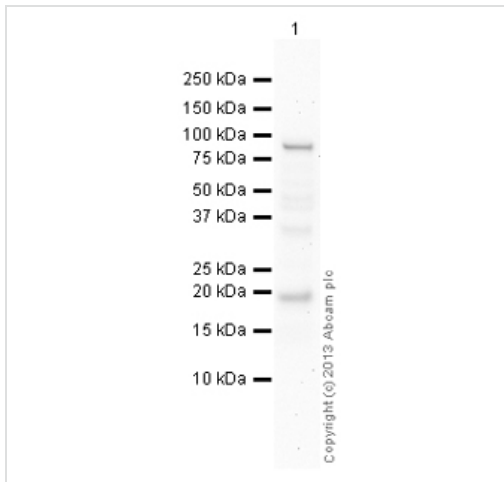
The application notes include recommended starting dilutions; optimal dilutions/concentrations should be determined by the end user.

| アプリケーション | Abreviews | 特記事項 |
|----------|-----------|--|
| WB | | Use a concentration of 1 µg/ml. Detects a band of approximately 19 kDa (predicted molecular weight: 19 kDa). |

ターゲット情報

| | |
|--------------|--|
| 機能 | Function as an agonist of NF-kappa B activation through the orphan IL-1-receptor-related protein 2. Could constitute part of an independent signaling system analogous to interleukin-1 alpha (IL-1A), beta (IL-1B) receptor agonist and interleukin-1 receptor type I (IL-1R1), that is present in epithelial barriers and takes part in local inflammatory response. |
| 組織特異性 | Highly expressed in tissues containing epithelial cells: skin, lung, stomach and esophagus. In skin is expressed only in keratinocytes but not in fibroblasts, endothelial cells or melanocytes. Up-regulated in lesional psoriasis skin. |
| 配列類似性 | Belongs to the IL-1 family. |
| 細胞内局在 | Secreted. |

画像



Western blot - Anti-IL36 gamma antibody
(ab116281)

Anti-IL36 gamma antibody (ab116281) at 1 µg/ml + Tonsil (Human) Tissue Lysate at 10 µg

Secondary

Goat Anti-Rabbit IgG H&L (HRP) (ab97051) at 1/10000 dilution

Developed using the ECL technique.

Performed under reducing conditions.

Predicted band size: 19 kDa

Observed band size: 19 kDa

Additional bands at: 90 kDa (possible non-specific binding)

Exposure time: 8 minutes

This blot was produced using a 4-12% Bis-tris gel under the MES buffer system. The gel was run at 200V for 35 minutes before being transferred onto a Nitrocellulose membrane at 30V for 70 minutes. The membrane was then blocked for an hour using 5% Bovine Serum Albumin before being incubated with ab116281 overnight at 4°C. Antibody binding was detected using an anti-rabbit antibody conjugated to HRP, and visualised using ECL development solution.

Please note: All products are "FOR RESEARCH USE ONLY AND ARE NOT INTENDED FOR DIAGNOSTIC OR THERAPEUTIC USE"

Our Abpromise to you: Quality guaranteed and expert technical support

- Replacement or refund for products not performing as stated on the datasheet
- Valid for 12 months from date of delivery
- Response to your inquiry within 24 hours
- We provide support in Chinese, English, French, German, Japanese and Spanish
- Extensive multi-media technical resources to help you
- We investigate all quality concerns to ensure our products perform to the highest standards

If the product does not perform as described on this datasheet, we will offer a refund or replacement. For full details of the Abpromise, please visit <http://www.abcam.co.jp/abpromise> or contact our technical team.

Terms and conditions

- Guarantee only valid for products bought direct from Abcam or one of our authorized distributors