

Product datasheet

Human Tissue Factor ELISA Kit (CD142) ab108903

★★★★☆ 1 Abreviews 1 References 画像数 3

製品の概要

製品名 Human Tissue Factor ELISA Kit (CD142)

検出方法 Colorimetric

再現性 Intra-Assay (同時再現性)

サンプル	N	平均値	SD	CV%
Overall				4.9%

Inter-Assay (日差再現性)

サンプル	N	平均値	SD	CV%
Overall				7%

サンプルの種類 Serum, Plasma, Cell culture extracts, Tissue

アッセイタイプ Sandwich (quantitative)

検出感度 = 20 pg/ml

検出範囲 12.5 pg/ml - 400 pg/ml

添加回収試験 97.5 %

全工程の試験時間 5h 00m

ステップ Multiple steps standard assay

種交差性 交差種: Human

製品の概要 Abcam's Tissue Factor (CD142) Human *in vitro* ELISA (Enzyme-Linked Immunosorbent Assay) kit is designed for the quantitative measurement of Tissue Factor concentrations in plasma, serum, tissue extracts and cell culture supernatants.

A Tissue Factor specific antibody has been precoated onto 96-well plates and blocked. Standards or test samples are added to the wells and subsequently a Tissue Factor specific biotinylated detection antibody is added and then followed by washing with wash buffer. Streptavidin-Peroxidase Conjugate is added and unbound conjugates are washed away with wash buffer. TMB is then used to visualize Streptavidin-Peroxidase enzymatic reaction. TMB is catalyzed by Streptavidin-Peroxidase to produce a blue color product that changes into yellow after adding acidic stop solution. The density of yellow coloration is directly proportional to the amount of Tissue Factor captured in plate.

アプリケーション

適用あり: Sandwich ELISA

試験プラットフォーム

Microplate

製品の特性

保存方法

Store at -20°C. Please refer to protocols.

内容	1 x 96 tests
100X Streptavidin-Peroxidase Conjugate	1 x 80µl
10X Diluent N Concentrate	1 x 30ml
20X Wash Buffer Concentrate	2 x 30ml
50X Biotinylated Human Tissue Factor Antibody	1 x 120µl
Chromogen Substrate	1 x 8ml
Sealing Tapes	3 units
Stop Solution	1 x 12ml
Tissue Factor Microplate (12 x 8 well strips)	1 unit
Tissue Factor Standard	1 vial

機能

Initiates blood coagulation by forming a complex with circulating factor VII or VIIa. The [TF:VIIa] complex activates factors IX or X by specific limited proteolysis. TF plays a role in normal hemostasis by initiating the cell-surface assembly and propagation of the coagulation protease cascade.

配列類似性

Belongs to the tissue factor family.

細胞内局在

Membrane.

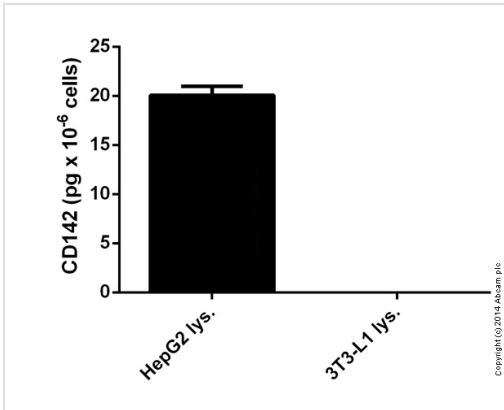
アプリケーション

Our [Abpromise guarantee](#) covers the use of **ab108903** in the following tested applications.

The application notes include recommended starting dilutions; optimal dilutions/concentrations should be determined by the end user.

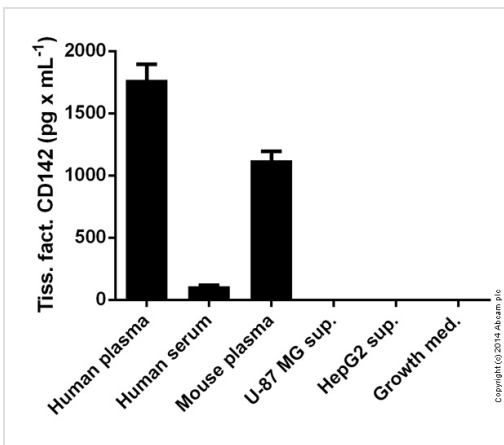
アプリケーション	Abreviews	特記事項
Sandwich ELISA		Use at an assay dependent dilution.

画像



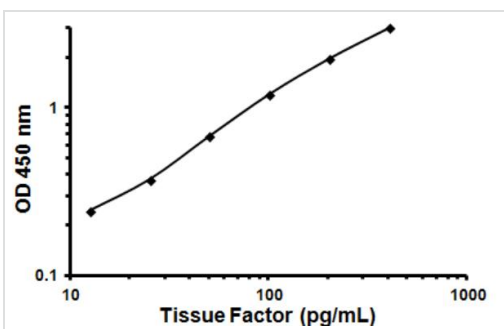
CD142 measured in cell lysates showing quantity (pg) per 1 million cells tested

Sandwich ELISA - 108903 Tissue Factor (CD142)
Human ELISA Kit



CD142 measured in various biofluids showing quantity (pg) per mL of tested sample

Sandwich ELISA - 108903 Tissue Factor (CD142)
Human ELISA Kit



Representative Standard Curve using ab108903.

Typical Standard Curve

Please note: All products are "FOR RESEARCH USE ONLY AND ARE NOT INTENDED FOR DIAGNOSTIC OR THERAPEUTIC USE"

Our Abpromise to you: Quality guaranteed and expert technical support

- Replacement or refund for products not performing as stated on the datasheet

- Valid for 12 months from date of delivery
- Response to your inquiry within 24 hours

- We provide support in Chinese, English, French, German, Japanese and Spanish
- Extensive multi-media technical resources to help you
- We investigate all quality concerns to ensure our products perform to the highest standards

If the product does not perform as described on this datasheet, we will offer a refund or replacement. For full details of the Abpromise, please visit <http://www.abcam.co.jp/abpromise> or contact our technical team.

Terms and conditions

- Guarantee only valid for products bought direct from Abcam or one of our authorized distributors