

Product datasheet

Human TNFRSF18 ELISA Kit (GITR) ab100527

画像数 6

製品の概要

製品名	Human TNFRSF18 ELISA Kit (GITR)
検出方法	Colorimetric
サンプルの種類	Cell culture supernatant, Serum, Plasma
アッセイタイプ	Sandwich (quantitative)
検出感度	< 15 pg/ml
検出範囲	13.7 pg/ml - 10000 pg/ml
添加回収試験	94 %

特定サンプルでの回収試験

サンプルの種類	平均 %	測定範囲
Cell culture supernatant	95.69	84% - 105%
Serum	94.18	83% - 104%
Plasma	92.75	82% - 102%

ステップ Multiple steps standard assay

種交差性 交差種: Human

製品の概要 Abcam's TNFRSF18 (GITR) Human ELISA (Enzyme-Linked Immunosorbent Assay) kit is an *in vitro* enzyme-linked immunosorbent assay for the quantitative measurement of Human TNFRSF18 in serum, plasma, and cell culture supernatants.

This assay employs an antibody specific for Human TNFRSF18 coated on a 96-well plate. Standards and samples are pipetted into the wells and TNFRSF18 present in a sample is bound to the wells by the immobilized antibody. The wells are washed and biotinylated anti-Human TNFRSF18 antibody is added. After washing away unbound biotinylated antibody, HRP-conjugated streptavidin is pipetted to the wells. The wells are again washed, a TMB substrate solution is added to the wells and color develops in proportion to the amount of TNFRSF18 bound. The Stop Solution changes the color from blue to yellow, and the intensity of the color is measured at 450 nm.

特記事項 Optimization may be required with urine samples

アプリケーション 適用あり: Sandwich ELISA

製品の特性

保存方法

Store at -20°C. Please refer to protocols.

内容	1 x 96 tests
20X Wash Buffer Concentrate	1 x 25ml
400X HRP-Streptavidin Concentrate	1 x 200µl
5X Assay Diluent B	1 x 15ml
Assay Diluent A	1 x 30ml
Biotinylated anti-Human TNFRSF18	2 vials
Recombinant Human TNFRSF18 Standard	2 vials
Stop Solution	1 x 8ml
TMB One-Step Substrate Reagent	1 x 12ml
TNFRSF18 Microplate (12 x 8 wells)	1 unit

関連性

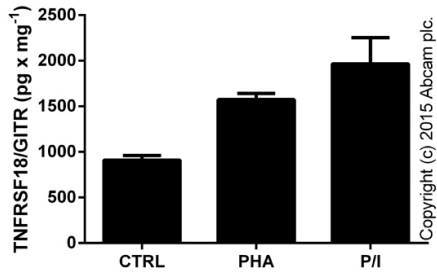
TNFRSF18 or GITR (glucocorticoid-induced TNF receptor family-regulated gene) is a 25 kD TNF receptor superfamily member (also known as AITR and TNFRSF18) originally identified in the mouse by comparing untreated and dexamethasone-treated murine T cell hybridoma cells. Human GITR was subsequently identified by searching an expressed sequence tag database. GITR is expressed on activated lymphocytes and is upregulated by T cell receptor engagement. The cytoplasmic domain of GITR is homologous to CD40, 4-1BB and CD27 and has been shown to interact with TRAF 1-3, but not TRAF 5 or 6. GITR signaling has been shown to regulate T cell proliferation and TCR-mediated apoptosis, and to break immunological self-tolerance. GITR appears to be highly expressed on CD4+CD25+ T regulatory cells and has been shown to induce NF-κB activation through TRAF2/NIK signaling. GITR has been proposed to be involved in the development of regulatory T cells and to regulate the activity of Th1 subsets. GITR binds GITRL, a TNF superfamily ligand expressed on endothelial cells, dendritic cells, macrophages, and B cells.

アプリケーション

Our [Abpromise guarantee](#) covers the use of **ab100527** in the following tested applications.

The application notes include recommended starting dilutions; optimal dilutions/concentrations should be determined by the end user.

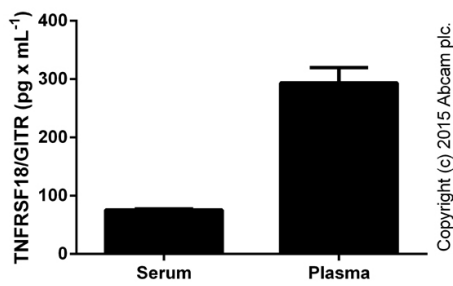
アプリケーション	Abreviews	特記事項
Sandwich ELISA		Use at an assay dependent concentration.



ELISA: ab100527 TNFRSF18 (GITR) Human ELISA

Kit

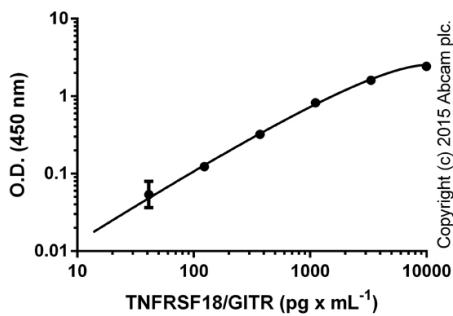
GITR measured in PBMC lysates (RIPA; 0.02-0.1 mg of proteins tested per well) after 72 hours of culture (1e6 cells per mL) in 0.1% DMSA (CTRL), 5 ug x mL⁻¹ PHA (Sigma) or in 50ng x mL⁻¹ PMA ([ab120297](#)) with 1uM ionomycin ([ab120116](#)) (P/I) (duplicates +/- SD).



ELISA: ab100527 TNFRSF18 (GITR) Human ELISA

Kit

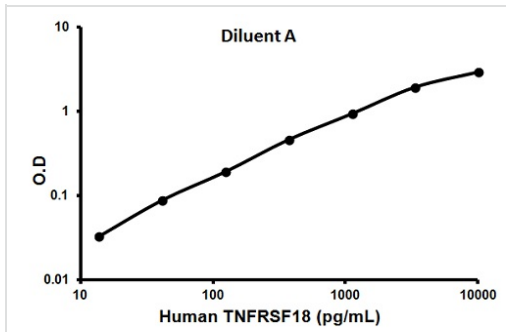
GITR measured in undiluted human biological fluids (undiluted; duplicates +/- SD).



ELISA: ab100527 TNFRSF18 (GITR) Human ELISA

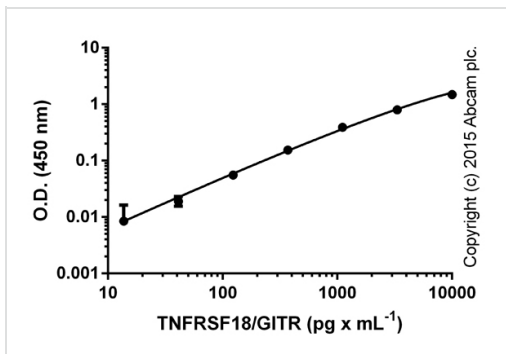
Kit

Standard curve in diluent B, with background signal subtracted (duplicates; +/- SD).



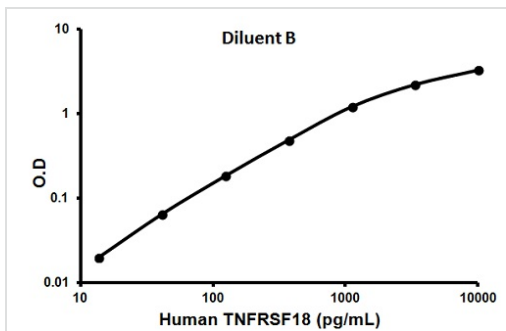
Representative standard curve using ab100527

Typical standard curve



Standard curve in diluent A, with background signal subtracted (duplicates; +/- SD).

ELISA: ab100527 TNFRSF18 (GITR) Human ELISA Kit



Representative standard curve using ab100527

Typical standard curve

Please note: All products are "FOR RESEARCH USE ONLY AND ARE NOT INTENDED FOR DIAGNOSTIC OR THERAPEUTIC USE"

Our Abpromise to you: Quality guaranteed and expert technical support

- Replacement or refund for products not performing as stated on the datasheet
- Valid for 12 months from date of delivery
- Response to your inquiry within 24 hours
- We provide support in Chinese, English, French, German, Japanese and Spanish
- Extensive multi-media technical resources to help you

- We investigate all quality concerns to ensure our products perform to the highest standards

If the product does not perform as described on this datasheet, we will offer a refund or replacement. For full details of the Abpromise, please visit <http://www.abcam.co.jp/abpromise> or contact our technical team.

Terms and conditions

- Guarantee only valid for products bought direct from Abcam or one of our authorized distributors