

Product datasheet

Anti-Human Serum Albumin antibody ab19180

2 References [画像数 1](#)

製品の概要

製品名	Anti-Human Serum Albumin antibody
製品の詳細	Goat polyclonal to Human Serum Albumin
特異性	By immunoelectrophoresis and ELISA this antibody reacts specifically with human albumin.
アプリケーション	適用あり: WB, ICC, ELISA
種交差性	交差種: Human
免疫原	Full length protein (Human).
ポジティブ・コントロール	This antibody gave a positive result when used in the following methanol fixed cell lines: HepG2.

製品の特性

製品の状態	Liquid
保存方法	Shipped at 4°C. Store at +4°C short term (1-2 weeks). Store at -20°C or -80°C. Avoid freeze / thaw cycle.
バッファー	Preservative: 0.1% Sodium Azide Constituents: PBS, pH 7.2
精製度	Immunogen affinity purified
ポリ/モノ	ポリクローナル
アイソタイプ	IgG

アプリケーション

Our [Abpromise guarantee](#) covers the use of **ab19180** in the following tested applications.

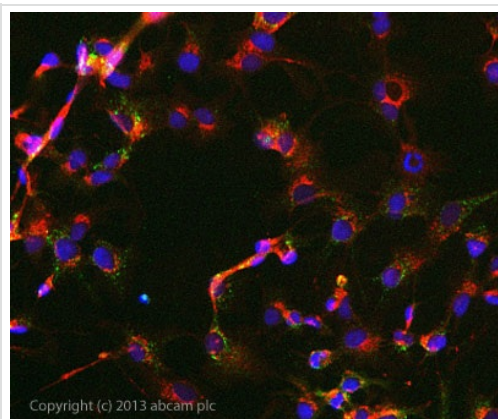
The application notes include recommended starting dilutions; optimal dilutions/concentrations should be determined by the end user.

アプリケーション	Abreviews	特記事項
WB		1/1000 - 1/30000. Predicted molecular weight: 69 kDa.
ICC		1/200 - 1/2000.
ELISA		1/100 - 1/1000.

ターゲット情報

機能	Serum albumin, the main protein of plasma, has a good binding capacity for water, Ca(2+), Na(+), K(+), fatty acids, hormones, bilirubin and drugs. Its main function is the regulation of the colloidal osmotic pressure of blood. Major zinc transporter in plasma, typically binds about 80% of all plasma zinc.
組織特異性	Plasma.
関連疾患	Defects in ALB are a cause of familial dysalbuminemic hyperthyroxinemia (FDH) [MIM:103600]. FDH is a form of euthyroid hyperthyroxinemia that is due to increased affinity of ALB for T(4). It is the most common cause of inherited euthyroid hyperthyroxinemia in Caucasian population.
配列類似性	Belongs to the ALB/AFP/VDB family. Contains 3 albumin domains.
翻訳後修飾	Kenitra variant is partially O-glycosylated at Thr-620. It has two new disulfide bonds Cys-600 to Cys-602 and Cys-601 to Cys-606. Glycated in diabetic patients. Phosphorylation sites are present in the extracellular medium. Acetylated on Lys-223 by acetylsalicylic acid.
細胞内局在	Secreted.

Anti-Human Serum Albumin antibody 画像



Immunocytochemistry/ Immunofluorescence - Anti-Human Serum Albumin antibody (ab19180)

ICC/IF image of ab19180 stained HepG2 cells. The cells were 100% methanol fixed (5 min) and then incubated in 1%BSA / 10% normal donkey serum / 0.3M glycine in 0.1% PBS-Tween for 1h to permeabilise the cells and block non-specific protein-protein interactions. The cells were then incubated with the antibody ab19180 at 5µg/ml overnight at +4°C. The secondary antibody (green) was DyLight® 488 donkey anti- goat ([ab96931](#)) IgG (H+L) used at a 1/250 dilution for 1h. Alexa Fluor® 594 WGA was used to label plasma membranes (red) at a 1/200 dilution for 1h. DAPI was used to stain the cell nuclei (blue) at a concentration of 1.43µM.

Please note: All products are "FOR RESEARCH USE ONLY AND ARE NOT INTENDED FOR DIAGNOSTIC OR THERAPEUTIC USE"

Our Abpromise to you: Quality guaranteed and expert technical support

- Replacement or refund for products not performing as stated on the datasheet
- Valid for 12 months from date of delivery
- Response to your inquiry within 24 hours
- We provide support in Chinese, English, French, German, Japanese and Spanish

- Extensive multi-media technical resources to help you
- We investigate all quality concerns to ensure our products perform to the highest standards

If the product does not perform as described on this datasheet, we will offer a refund or replacement. For full details of the Abpromise, please visit <http://www.abcam.co.jp/abpromise> or contact our technical team.

Terms and conditions

- Guarantee only valid for products bought direct from Abcam or one of our authorized distributors