

Product datasheet

Human EGF ELISA Kit ab100504

1 References 画像数 3

製品の概要

| | |
|---------|---|
| 製品名 | Human EGF ELISA Kit |
| 検出方法 | Colorimetric |
| サンプルの種類 | Cell culture supernatant, Serum, Plasma |
| アッセイタイプ | Sandwich (quantitative) |
| 検出感度 | < 1 pg/ml |
| 検出範囲 | 0.82 pg/ml - 200 pg/ml |
| 添加回収試験 | 95 % |

特定サンプルでの回収試験

| サンプルの種類 | 平均 % | 測定範囲 |
|--------------------------|-------|------------|
| Cell culture supernatant | 95.52 | 85% - 106% |
| Serum | 94.52 | 83% - 104% |
| Plasma | 93.76 | 84% - 105% |

ステップ Multiple steps standard assay

種交差性 交差種: Human

製品の概要

Abcam's EGF Human ELISA (Enzyme-Linked Immunosorbent Assay) kit is an *in vitro* enzyme-linked immunosorbent assay for the quantitative measurement of Human EGF in serum, plasma and cell culture supernatants.

This assay employs an antibody specific for Human EGF coated on a 96-well plate. Standards and samples are pipetted into the wells and EGF present in a sample is bound to the wells by the immobilized antibody. The wells are washed and biotinylated anti-Human EGF antibody is added. After washing away unbound biotinylated antibody, HRP-conjugated streptavidin is pipetted to the wells. The wells are again washed, a TMB substrate solution is added to the wells and color develops in proportion to the amount of EGF bound. The Stop Solution changes the color from blue to yellow, and the intensity of the color is measured at 450 nm.

特記事項 Optimisation may be required with urine samples.

アプリケーション 適用あり: Sandwich ELISA

試験プラットフォーム Microplate

製品の特性

保存方法

Store at -20°C. Please refer to protocols.

| 内容 | 1 x 96 tests |
|---|--------------|
| 20X Wash Buffer Concentrate | 1 x 25ml |
| 5X Assay Diluent B | 1 x 15ml |
| 600X HRP-Streptavidin Concentrate | 1 x 200µl |
| Assay Diluent A | 1 x 30ml |
| Biotinylated anti-Human EGF (lyophilized) | 2 vials |
| EGF Microplate (12 strips x 8 wells) | 1 unit |
| Recombinant Human EGF Standard | 2 vials |
| Stop Solution | 1 x 8ml |
| TMB One-Step Substrate Reagent | 1 x 12ml |

関連性

Epidermal growth factor (EGF) has a profound effect on the differentiation of specific cells in vivo and is a potent mitogenic factor for a variety of cultured cells. The EGF precursor is believed to exist as a membrane bound molecule which is proteolytically cleaved to generate the 53 amino acid peptide hormone that stimulates cells to divide. EGF exerts its actions by binding to the EGFR, a 170 kDa protein. Epidermal growth factor (EGF) is a key growth factor regulating cell survival. Through its binding to cell surface receptors, EGF activates an extensive network of signal transduction pathways that include activation of the PI3K/AKT, RAS/ERK and JAK/STAT pathways. Because of its key role in driving the proliferation of cells, EGFR is a target of several anti-cancer drugs currently in development.

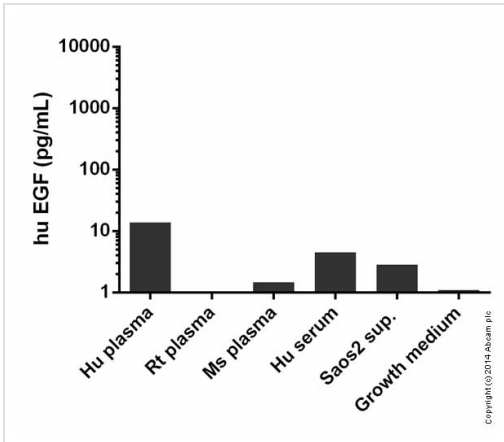
アプリケーション

Our [Abpromise guarantee](#) covers the use of **ab100504** in the following tested applications.

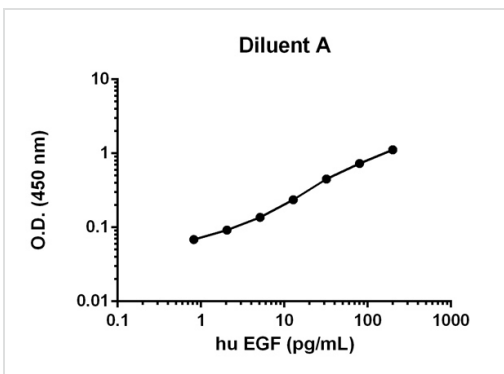
The application notes include recommended starting dilutions; optimal dilutions/concentrations should be determined by the end user.

| アプリケーション | Abreviews | 特記事項 |
|----------------|-----------|--|
| Sandwich ELISA | | Use at an assay dependent concentration. |

画像

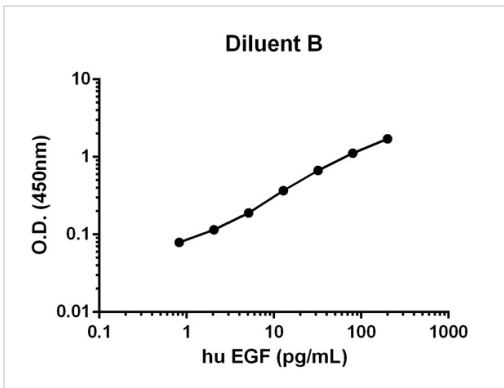


Sandwich ELISA - ab100504 huEGF



Standard curve in Diluent A : mean of duplicates (+/-SD)

hu EGF (ab100504)



Standard curve in Diluent B : mean of duplicates (+/-SD)

huEGF (ab100504)

Please note: All products are "FOR RESEARCH USE ONLY AND ARE NOT INTENDED FOR DIAGNOSTIC OR THERAPEUTIC USE"

Our Abpromise to you: Quality guaranteed and expert technical support

- Replacement or refund for products not performing as stated on the datasheet
- Valid for 12 months from date of delivery
- Response to your inquiry within 24 hours

- We provide support in Chinese, English, French, German, Japanese and Spanish
- Extensive multi-media technical resources to help you
- We investigate all quality concerns to ensure our products perform to the highest standards

If the product does not perform as described on this datasheet, we will offer a refund or replacement. For full details of the Abpromise, please visit <http://www.abcam.co.jp/abpromise> or contact our technical team.

Terms and conditions

- Guarantee only valid for products bought direct from Abcam or one of our authorized distributors