

Product datasheet

Human Activin A ELISA Kit ab113316

★★★★★ 2 Abreviews [画像数 3](#)

製品の概要

製品名	Human Activin A ELISA Kit
検出方法	Colorimetric
サンプルの種類	Cell culture supernatant, Serum, Plasma
アッセイタイプ	Sandwich (quantitative)
検出感度	< 15 pg/ml
検出範囲	20.48 pg/ml - 5000 pg/ml
添加回収試験	83 %

特定サンプルでの回収試験

サンプルの種類	平均 %	測定範囲
Cell culture supernatant	94.73	82% - 111%
Serum	77.89	68% - 83%
Plasma	76.92	67% - 110%

ステップ Multiple steps standard assay

種交差性 交差種: Human

製品の概要

Abcam's Activin A Human ELISA (Enzyme-Linked Immunosorbent Assay) kit is an *in vitro* enzyme-linked immunosorbent assay for the quantitative measurement of Human Activin A in serum, plasma and cell culture supernatants.

This assay employs an antibody specific for Human Activin A coated on a 96-well plate. Standards and samples are pipetted into the wells and Activin A present in a sample is bound to the wells by the immobilized antibody. The wells are washed and biotinylated anti-Human Activin A antibody is added. After washing away unbound biotinylated antibody, HRP-conjugated streptavidin is pipetted to the wells. The wells are again washed, a TMB substrate solution is added to the wells and color develops in proportion to the amount of Activin A bound. The Stop Solution changes the color from blue to yellow, and the intensity of the color is measured at 450 nm.

特記事項 Optimization may be required with urine samples.

アプリケーション 適用あり: Sandwich ELISA

法規制情報

医薬用外毒物

製品の特性

保存方法 Store at -20°C. Please refer to protocols.

内容	1 x 96 tests
200X HRP-Streptavidin Concentrate	1 x 200µl
20X Wash Buffer Concentrate	1 x 25ml
5X Assay Diluent B	1 x 15ml
Activin A Microplate (12 x 8 wells)	1 unit
Assay Diluent A	1 x 30ml
Biotinylated anti-Human Activin A (lyophilized)	2 vials
Recombinant Human Activin A Standard	2 vials
Stop Solution	1 x 8ml
TMB One-Step Substrate Reagent	1 x 12ml

関連性 Activin A is a homodimer of 14kDa beta-A. Activin A, a cytokine member of the transforming growth factor-beta superfamily, is expressed locally by the mesenchymal component of the hemopoietic microenvironment. Its expression is regulated on the mRNA level by different cytokines, and the biological activity of the protein is tightly controlled by several inhibitory molecules.¹ Inhibins and activins are members of the transforming growth factor beta superfamily and are known to modulate the growth and differentiation of several cell types.² Inhibins and activins inhibit and activate, respectively, the secretion of follitropin by the pituitary gland. Inhibins/activins are involved in regulating a number of diverse functions such as hypothalamic and pituitary hormone secretion, gonadal hormone secretion, germ cell development and maturation, erythroid differentiation, insulin secretion, nerve cell survival, embryonic axial development or bone growth, depending on their subunit composition. Inhibins appear to oppose the functions of activins. The standard product used in this kit is recombinant Activin A, which is composed of two single chains of 116 amino acids with the molecular mass of 26KDa.

細胞内局在 Secreted

アプリケーション

Our [Abpromise guarantee](#) covers the use of **ab113316** in the following tested applications.

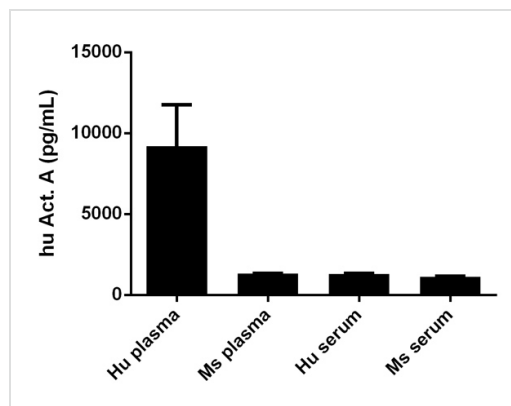
The application notes include recommended starting dilutions; optimal dilutions/concentrations should be determined by the end user.

アプリケーション	Abreviews	特記事項
----------	-----------	------

Sandwich ELISA

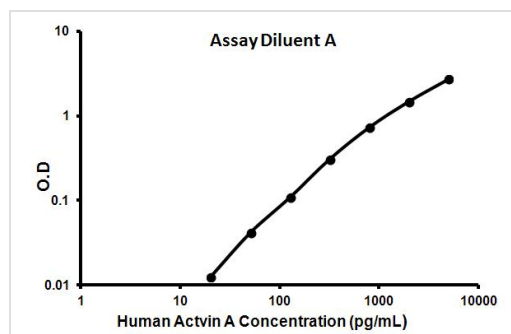
Use at an assay dependent concentration.

画像



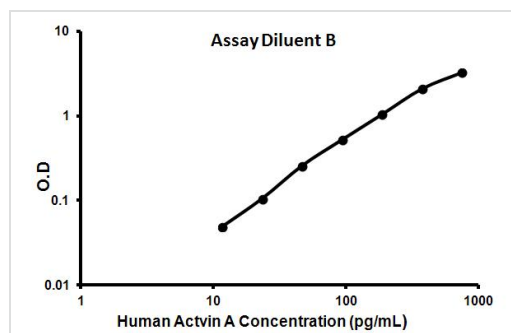
Hu Actin A measured in biological fluids showing quantity (pg) per mL of tested sample.

Hu Actin A Elisa Kit (ab113316)



Representative standard curve using ab113316

Typical data A



Representative standard curve using ab113316

Typical data B

Please note: All products are "FOR RESEARCH USE ONLY AND ARE NOT INTENDED FOR DIAGNOSTIC OR THERAPEUTIC USE"

Our Abpromise to you: Quality guaranteed and expert technical support

- Replacement or refund for products not performing as stated on the datasheet
- Valid for 12 months from date of delivery
- Response to your inquiry within 24 hours

- We provide support in Chinese, English, French, German, Japanese and Spanish
- Extensive multi-media technical resources to help you
- We investigate all quality concerns to ensure our products perform to the highest standards

If the product does not perform as described on this datasheet, we will offer a refund or replacement. For full details of the Abpromise, please visit <http://www.abcam.co.jp/abpromise> or contact our technical team.

Terms and conditions

- Guarantee only valid for products bought direct from Abcam or one of our authorized distributors