

## Product datasheet

# Anti-Histone H1x antibody - ChIP Grade ab31972

★★★★★ 3 Abreviews 5 References 画像数 4

### 製品の概要

製品名	Anti-Histone H1x antibody - ChIP Grade
製品の詳細	Rabbit polyclonal to Histone H1x - ChIP Grade
特異性	Using western blot analysis ab31972 recognises histone H1x in HeLa nuclear extract.
アプリケーション	<b>適用あり:</b> ChIP, ICC/IF, IHC-P, WB
種交差性	交差種: Human 交差が予測される動物種: Mouse
免疫原	Synthetic peptide corresponding to Human Histone H1x aa 200 to the C-terminus conjugated to Keyhole Limpet Haemocyanin (KLH). Database link: <a href="#">Q92522</a> (Peptide available as <a href="#">ab18052</a> )
ポジティブ・コントロール	HeLa nuclear extract This antibody gave a positive result in IHC in the following FFPE tissue: Human breast adenocarcinoma.

### 製品の特性

製品の状態	Liquid
保存方法	Shipped at 4°C. Store at +4°C short term (1-2 weeks). Upon delivery aliquot. Store at -20°C or -80°C. Avoid freeze / thaw cycle.
バッファー	Preservative: 0.02% Sodium Azide Constituents: 1% BSA, PBS, pH 7.4
精製度	Immunogen affinity purified
ポリ/モノ	ポリクローナル
アイソタイプ	IgG

### アプリケーション

Our [Abpromise guarantee](#) covers the use of **ab31972** in the following tested applications.

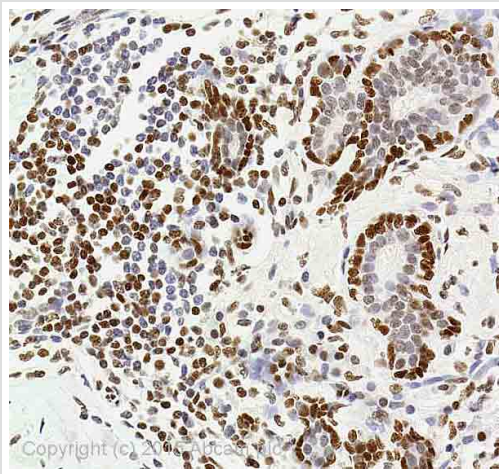
The application notes include recommended starting dilutions; optimal dilutions/concentrations should be determined by the end user.

アプリケーション	Abreviews	特記事項
ChIP	★★★★☆	Use 2 µg for 25 µg of chromatin.
ICC/IF		Use a concentration of 1 µg/ml.
IHC-P		Use a concentration of 1 µg/ml. Perform heat mediated antigen retrieval before commencing with IHC staining protocol.
WB	★★★★★	Use a concentration of 1 µg/ml. Detects a band of approximately 35 kDa (predicted molecular weight: 35 kDa).

## ターゲット情報

機能	Histones H1 are necessary for the condensation of nucleosome chains into higher-order structures.
組織特異性	Expressed ubiquitously.
配列類似性	Belongs to the histone H1/H5 family. Contains 1 H15 (linker histone H1/H5 globular) domain.
細胞内局在	Nucleus. Chromosome.

## 画像

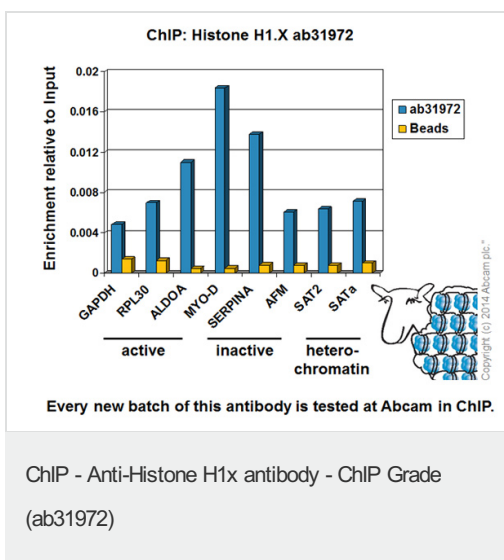


Immunohistochemistry (Formalin/PFA-fixed paraffin-embedded sections) - Anti-Histone H1x antibody - ChIP Grade (ab31972)

IHC image of Histone H1x staining in Human breast adenocarcinoma formalin fixed paraffin embedded tissue section\*, performed on a Leica Bond™ system using the standard protocol F. The section was pre-treated using heat mediated antigen retrieval with sodium citrate buffer (pH6, epitope retrieval solution 1) for 20 mins. The section was then incubated with ab31972, 1 µg/ml, for 15 mins at room temperature and detected using an HRP conjugated compact polymer system. DAB was used as the chromogen. The section was then counterstained with haematoxylin and mounted with DPX.

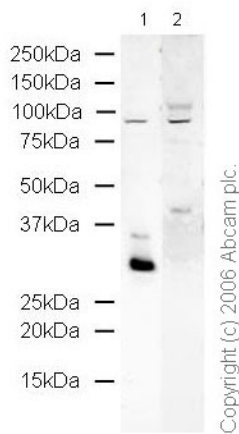
For other IHC staining systems (automated and non-automated) customers should optimize variable parameters such as antigen retrieval conditions, primary antibody concentration and antibody incubation times.

\*Tissue obtained from the Human Research Tissue Bank, supported by the NIHR Cambridge Biomedical Research Centre



ChIP - Anti-Histone H1x antibody - ChIP Grade (ab31972)

Chromatin was prepared from HeLa cells according to the Abcam X-ChIP protocol. Cells were fixed with formaldehyde for 10 minutes. The ChIP was performed with 25 µg of chromatin, 2 µg of ab31972 (blue), and 20 µl of Protein A/G sepharose beads. No antibody was added to the beads control (yellow). The immunoprecipitated DNA was quantified by real time PCR (Taqman approach for active and inactive loci, Sybr green approach for heterochromatic loci). Primers and probes are located in the first kb of the transcribed region.



Western blot - Anti-Histone H1x antibody - ChIP Grade (ab31972)

**All lanes :** Anti-Histone H1x antibody - ChIP

Grade (ab31972) at 1 µg/ml

**Lane 1 :** HeLa nuclear lysate

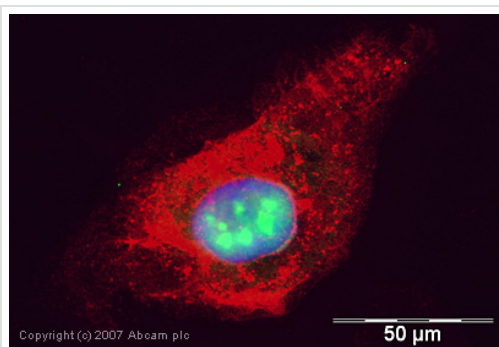
**Lane 2 :** HeLa nuclear lysate with Human Histone H1x peptide (ab18052) at 1 µg/ml

Lysates/proteins at 20 µg per lane.

**Predicted band size :** 35 kDa

**Observed band size :** 35 kDa

**Additional bands at :** 98 kDa (possible non-specific secondary antibody binding). ab31972 recognises histone H1.X in HeLa nuclear extract at 35 kDa (lane 1), which is blocked using the immunizing peptide ab18052.



Immunocytochemistry/ Immunofluorescence - Anti-Histone H1x antibody - ChIP Grade (ab31972)

ICC/IF image of ab31972 stained human HeLa cells. The cells were PFA fixed (10 min), permeabilised in TBS-T (20 min) and incubated with the antibody (ab31972, 1 µg/ml) for 1h at room temperature. 1%BSA / 10% normal goat serum / 0.3M glycine was used to quench autofluorescence and block non-specific protein-protein interactions. The secondary antibody (green) was Alexa Fluor® 488 goat anti-rabbit IgG (H+L) used at a 1/1000 dilution for 1h. Alexa Fluor® 594 WGA was used to label plasma membranes (red). DAPI was used to stain the cell nuclei (blue).

**Please note:** All products are "FOR RESEARCH USE ONLY AND ARE NOT INTENDED FOR DIAGNOSTIC OR THERAPEUTIC USE"

### Our Abpromise to you: Quality guaranteed and expert technical support

- Replacement or refund for products not performing as stated on the datasheet
- Valid for 12 months from date of delivery
- Response to your inquiry within 24 hours
- We provide support in Chinese, English, French, German, Japanese and Spanish
- Extensive multi-media technical resources to help you
- We investigate all quality concerns to ensure our products perform to the highest standards

If the product does not perform as described on this datasheet, we will offer a refund or replacement. For full details of the Abpromise, please visit <http://www.abcam.co.jp/abpromise> or contact our technical team.

## Terms and conditions

---

- Guarantee only valid for products bought direct from Abcam or one of our authorized distributors