

## Product datasheet

# Anti-Hex antibody ab34222

★★★★☆ 3 Abreviews 2 References 画像数 2

### 製品の概要

製品名	Anti-Hex antibody
製品の詳細	Rabbit polyclonal to Hex
由来種	Rabbit
アプリケーション	<b>適用あり:</b> ChIP, WB, IHC-FoFr
種交差性	交差種: Mouse 交差が予測される動物種: Rat, Human, Pig
免疫原	Synthetic peptide conjugated to KLH derived from within residues 200 to the C-terminus of Human Hex.Immunogen の所有権に関して (Peptide available as <a href="#">ab28465</a> .)
ポジティブ・コントロール	This antibody gave a positive signal in Mouse Liver Tissue Lysate.

### 製品の特性

製品の状態	Liquid
保存方法	Shipped at 4°C. Store at +4°C short term (1-2 weeks). Upon delivery aliquot. Store at -20°C or -80°C. Avoid freeze / thaw cycle.
バッファー	Preservative: 0.02% Sodium Azide Constituents: 1% BSA, PBS, pH 7.4
精製度	Immunogen affinity purified
ポリ/モノ	ポリクローナル
アイソタイプ	IgG

### アプリケーション

Our [Abpromise guarantee](#) covers the use of **ab34222** in the following tested applications.

The application notes include recommended starting dilutions; optimal dilutions/concentrations should be determined by the end user.

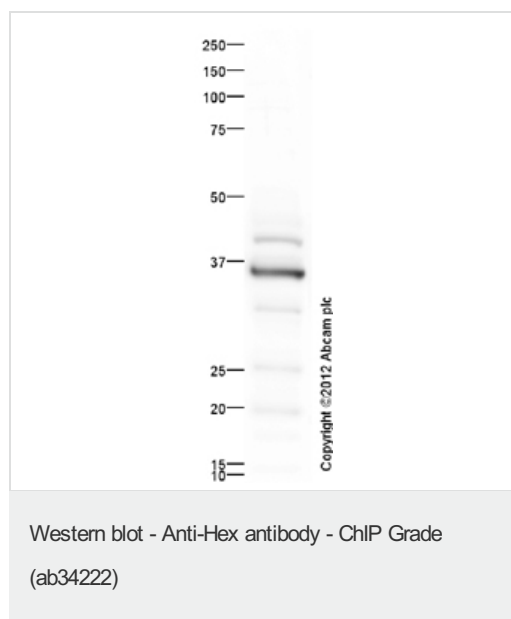
アプリケーション	Abreviews	特記事項
ChIP	★★★★☆	Use at an assay dependent concentration.

アプリケーション	Abreviews	特記事項
WB	★★★★☆	Use a concentration of 1 µg/ml. Detects a band of approximately 37 kDa (predicted molecular weight: 30 kDa). Can be blocked with <a href="#">Human Hex peptide (ab28465)</a> .
IHC-FoFr	★★★★☆	1/100.

## ターゲット情報

機能	Recognizes the DNA sequence 5'-ATTAA-3'. Transcriptional repressor. May play a role in hematopoietic differentiation. Establishes anterior identity at two levels; acts early to enhance canonical WNT-signaling by repressing expression of TLE4, and acts later to inhibit NODAL-signaling by directly targeting NODAL.
組織特異性	Liver and promyelocytic leukemia cell line HL60.
配列類似性	Contains 1 homeobox DNA-binding domain.
発生段階	Expressed during hematopoiesis.
細胞内局在	Nucleus.

## 画像



Anti-Hex antibody (ab34222) at 1 µg/ml +  
Liver (Mouse) Tissue Lysate at 10 µg

### Secondary

Goat Anti-Rabbit IgG H&L (HRP) preadsorbed  
([ab97080](#)) at 1/5000 dilution

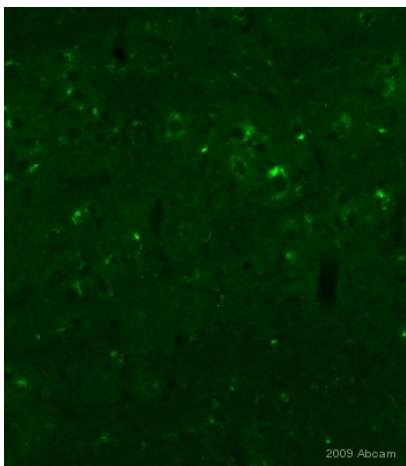
Performed under reducing conditions.

**Predicted band size:** 30 kDa

**Observed band size:** 37 kDa

**Additional bands at:** 42 kDa. We are unsure as to the identity of these extra bands.

**Exposure time:** 30 seconds



Immunohistochemistry (PFA perfusion fixed frozen sections) - Anti-Hex antibody - ChIP Grade (ab34222)

This image is courtesy of an Abreview submitted by Dr Sophie Pezet

ab34222 staining Hex in mouse brain tissue section by Immunohistochemistry (PFA perfusion fixed frozen sections). Tissue from 4% PFA perfused animals underwent overnight fixation in 4% paraformaldehyde, cryoprotected in 30% sucrose and cut using cryostat. The primary antibody was diluted, 1/100 (PBS + 0.3% Triton X100) and incubated with sample for 18 hours at 20°C. An Alexa Fluor®488 conjugated goat polyclonal to rabbit IgG at 1/1000 dilution, was used as secondary.

**Please note:** All products are "FOR RESEARCH USE ONLY AND ARE NOT INTENDED FOR DIAGNOSTIC OR THERAPEUTIC USE"

### Our Abpromise to you: Quality guaranteed and expert technical support

- Replacement or refund for products not performing as stated on the datasheet
- Valid for 12 months from date of delivery
- Response to your inquiry within 24 hours
- We provide support in Chinese, English, French, German, Japanese and Spanish
- Extensive multi-media technical resources to help you
- We investigate all quality concerns to ensure our products perform to the highest standards

If the product does not perform as described on this datasheet, we will offer a refund or replacement. For full details of the Abpromise, please visit <http://www.abcam.co.jp/abpromise> or contact our technical team.

### Terms and conditions

- Guarantee only valid for products bought direct from Abcam or one of our authorized distributors