

Product datasheet

Anti-Hemoglobin subunit alpha antibody [EP3607] ab109444

RabMAb[®]

画像数 3

製品の概要

製品名	Anti-Hemoglobin subunit alpha antibody [EP3607]
製品の詳細	Rabbit monoclonal [EP3607] to Hemoglobin subunit alpha
由来種	Rabbit
特異性	Mouse and rat tissues tested (lung and kidney) gave negative or low sensitivity staining in IHC-P. This antibody may not be suitable for IHC with mouse or rat samples. If you have any questions, please contact our Scientific Support team.
アプリケーション	適用あり: WB, IHC-P 適用なし: Flow Cyt, ICC or IP
種交差性	交差種: Mouse, Rat, Human
免疫原	Synthetic peptide within Human Hemoglobin subunit alpha aa 1-100. The exact sequence is proprietary.
ポジティブ・コントロール	WB: K562, fetal liver, and fetal heart lysates IHC-P: Human spleen and Human colon tissues
特記事項	Our RabMAb [®] technology is a patented hybridoma-based technology for making rabbit monoclonal antibodies. For details on our patents, please refer to RabMab[®] patents

製品の特性

製品の状態	Liquid
保存方法	Shipped at 4°C. Store at -20°C. Stable for 12 months at -20°C.
バッファー	PBS 49%, Sodium azide 0.01%, Glycerol 50%, BSA 0.05%
精製度	Tissue culture supernatant
ポリ/モノ	モノクローナル
クローン名	EP3607
アイソタイプ	IgG

アプリケーション

Our [Abpromise guarantee](#) covers the use of **ab109444** in the following tested applications.

The application notes include recommended starting dilutions; optimal dilutions/concentrations should be determined by the end user.

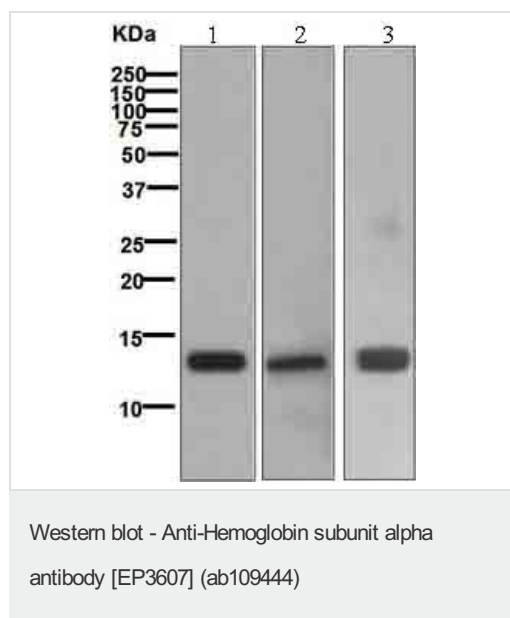
アプリケーション	Abreviews	特記事項
WB		1/1000 - 1/10000. Detects a band of approximately 14 kDa (predicted molecular weight: 15 kDa).
IHC-P		1/250 - 1/500. Antigen retrieval is recommended.

追加情報 Is unsuitable for Flow Cyt, ICC or IP.

ターゲット情報

機能	Involved in oxygen transport from the lung to the various peripheral tissues.
組織特異性	Red blood cells.
関連疾患	Heinz body anemias Alpha-thalassemia Alpha(0)-thalassemia is associated with non-immune hydrops fetalis, a generalized edema of the fetus with fluid accumulation in the body cavities due to non-immune causes. Non-immune hydrops fetalis is not a diagnosis in itself but a symptom, a feature of many genetic disorders, and the end-stage of a wide variety of disorders. Hemoglobin H disease
配列類似性	Belongs to the globin family.
翻訳後修飾	The initiator Met is not cleaved in variant Thionville and is acetylated.

画像



All lanes : Anti-Hemoglobin subunit alpha antibody [EP3607] (ab109444) at 1/1000 dilution

Lane 1 : K562 lysate

Lane 2 : Fetal liver lysate

Lane 3 : Fetal heart lysates

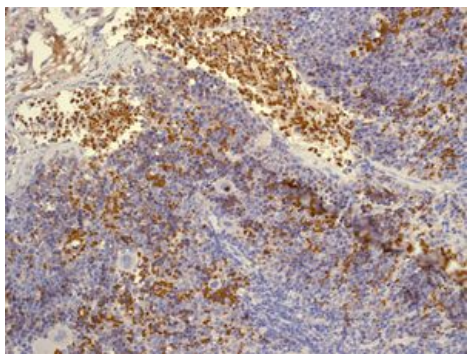
Lysates/proteins at 10 µg per lane.

Secondary

All lanes : Standard HRP labelled goat anti-rabbit at 1/2000 dilution

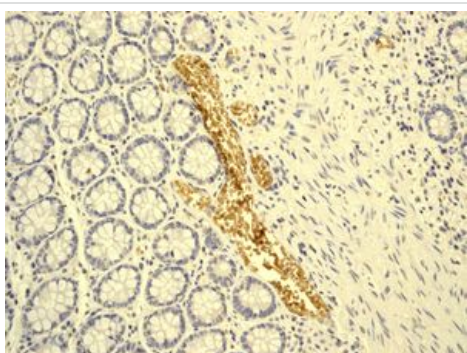
Predicted band size: 15 kDa

Observed band size: 14 kDa



Immunohistochemical analysis of Hemoglobin subunit alpha in paraffin embedded Human spleen tissue, using ab109444 at a 1/250 dilution.

Immunohistochemistry (Formalin/PFA-fixed paraffin-embedded sections) - Anti-Hemoglobin subunit alpha antibody [EP3607] (ab109444)



Immunohistochemical analysis of Hemoglobin subunit alpha in paraffin embedded Human colon tissue, using ab109444 at a 1/250 dilution.

Immunohistochemistry (Formalin/PFA-fixed paraffin-embedded sections) - Anti-Hemoglobin subunit alpha antibody [EP3607] (ab109444)

Please note: All products are "FOR RESEARCH USE ONLY AND ARE NOT INTENDED FOR DIAGNOSTIC OR THERAPEUTIC USE"

Our Abpromise to you: Quality guaranteed and expert technical support

- Replacement or refund for products not performing as stated on the datasheet
- Valid for 12 months from date of delivery
- Response to your inquiry within 24 hours
- We provide support in Chinese, English, French, German, Japanese and Spanish
- Extensive multi-media technical resources to help you
- We investigate all quality concerns to ensure our products perform to the highest standards

If the product does not perform as described on this datasheet, we will offer a refund or replacement. For full details of the Abpromise, please visit <http://www.abcam.co.jp/abpromise> or contact our technical team.

Terms and conditions

- Guarantee only valid for products bought direct from Abcam or one of our authorized distributors