

Product datasheet

Hela-Vehicle treated (Negative Control) Whole Cell Lysate ab116321

画像数 2

製品の概要

製品名	Hela-Vehicle treated (Negative Control) Whole Cell Lysate
特記事項	We recommend aliquoting the extracts into single use fractions and then storing them at -80°C. Product was previously marketed under the MitoSciences sub-brand.
アプリケーション	適用あり: WB

製品の特性

製品の状態	Liquid
保存方法	Shipped on Dry Ice. Upon delivery aliquot. Store at -80°C. Avoid freeze / thaw cycle.
バッファー	pH: 7.50 Note: This Lysate was normalised with SDS-PAGE sample buffer to current concentration.
背景	HeLa cells are human epithelial cells from a fatal cervical carcinoma. The cell line was derived from cervical cancer cells taken from Henrietta Lacks, in 1951. Horizontal gene transfer from human papillomavirus 18 (HPV18) to human cervical cells created the HeLa genome which is different from either parent genome in various ways including its number of chromosomes. HeLa cells have a modal chromosome number of 82, with 4 copies of chromosome 12 and 3 copies of chromosomes 6, 8, and 17. HeLa cells are adherent cells (they stick to surfaces) and maintain contact inhibition in vitro.

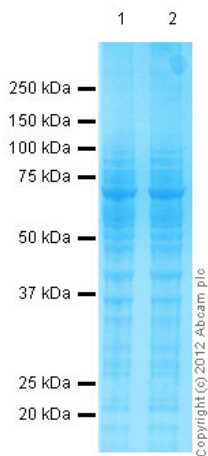
アプリケーション

Our [Abpromise guarantee](#) covers the use of **ab116321** in the following tested applications.

The application notes include recommended starting dilutions; optimal dilutions/concentrations should be determined by the end user.

アプリケーション	Abreviews	特記事項
WB		Use at an assay dependent concentration.

Hela-Vehicle treated (Negative Control) Whole Cell Lysate 画像



SDS-PAGE - Hela-Vehicle treated (Negative Control)
Whole Cell Lysate (ab116321)

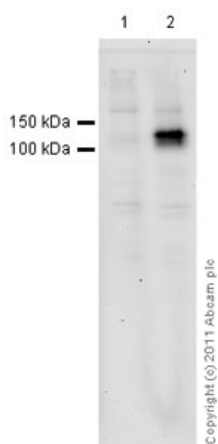
**All lanes stained with Optiblot Blue
(ab119211) (20 ml)**

Lane 1 : Hela-DFO treated (0.5mM, 24h)

Whole Cell Lysate (ab116322)

Lane 2 : Hela-Vehicle treated (Negative Control) Whole Cell Lysate (ab116321)

Lysates/proteins at 10 µg per lane.



Western blot - Hela-Vehicle treated (Negative Control) Whole Cell Lysate (ab116321)

All lanes : Anti-HIF-1 alpha antibody
(ab103063) at 2 µg/ml

Lane 1 : Hela-Vehicle treated (Negative Control) Whole Cell Lysate (ab116321)

Lane 2 : Hela-DFO treated (0.5mM, 24h) Whole Cell Lysate (ab116322)

Lysates/proteins at 10 µg per lane.

Secondary

Goat Anti-Rabbit IgG H&L (HRP) preadsorbed
(ab97080) at 1/5000 dilution
Developed using the ECL technique

Performed under reducing conditions.

Please note: All products are "FOR RESEARCH USE ONLY AND ARE NOT INTENDED FOR DIAGNOSTIC OR THERAPEUTIC USE"

Our Abpromise to you: Quality guaranteed and expert technical support

- Replacement or refund for products not performing as stated on the datasheet
- Valid for 12 months from date of delivery
- Response to your inquiry within 24 hours
- We provide support in Chinese, English, French, German, Japanese and Spanish
- Extensive multi-media technical resources to help you
- We investigate all quality concerns to ensure our products perform to the highest standards

If the product does not perform as described on this datasheet, we will offer a refund or replacement. For full details of the Abpromise, please visit <http://www.abcam.co.jp/abpromise> or contact our technical team.

Terms and conditions

- Guarantee only valid for products bought direct from Abcam or one of our authorized distributors