

## Product datasheet

# Anti-HSD11B1 antibody ab39364

★★★★★ 2 Abreviews 14 References 画像数 2

### 製品の概要

製品名	Anti-HSD11B1 antibody
製品の詳細	Rabbit polyclonal to HSD11B1
由来種	Rabbit
アプリケーション	適用あり: WB, IHC-P, IHC-Fr
種交差性	交差種: Mouse, Rat, Sheep, Horse, Human 交差が予測される動物種: Rabbit, Hamster, Cow, Cat, Dog, Monkey, Cynomolgus monkey, Macaque monkey
免疫原	Synthetic peptide: CLELGAASAHYIAGT , corresponding to amino acids 78/92 of Human HSD11B1 <a href="#">Run BLAST with</a> <a href="#">Run BLAST with</a>
ポジティブ・コントロール	Rat and mouse liver microsomes.

### 製品の特性

製品の状態	Liquid
保存方法	Shipped at 4°C. Upon delivery aliquot and store at -20°C. Avoid freeze / thaw cycles.
バッファー	pH: 7.40 Preservative: 0.02% Sodium azide Constituents: 0.1% BSA, 50% Glycerol
精製度	Immunogen affinity purified
特記事項(精製)	ab39364 is an affinity purified IgG
ポリ/モノ	ポリクローナル
アイソタイプ	IgG

### アプリケーション

Our [Abpromise guarantee](#) covers the use of **ab39364** in the following tested applications.

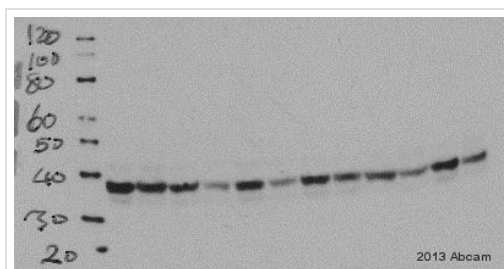
The application notes include recommended starting dilutions; optimal dilutions/concentrations should be determined by the end user.

アプリケーション	Abreviews	特記事項
WB	★★★★★	Use a concentration of 1 µg/ml. Detects a band of approximately 35 kDa (predicted molecular weight: 32 kDa). Can be blocked with <a href="#">HSD11B1 peptide (ab101097)</a> .
IHC-P	★★★★☆	Use a concentration of 2 µg/ml.
IHC-Fr		Use at an assay dependent concentration. PubMed: 20385225

## ターゲット情報

機能	Catalyzes reversibly the conversion of cortisol to the inactive metabolite cortisone. Catalyzes reversibly the conversion of 7-ketocholesterol to 7-beta-hydroxycholesterol. In intact cells, the reaction runs only in one direction, from 7-ketocholesterol to 7-beta-hydroxycholesterol.
組織特異性	Widely expressed. Highest expression in liver.
関連疾患	Defects in HSD11B1 are a cause of cortisone reductase deficiency (CRD) [MIM:604931]. In CRD, activation of cortisone to cortisol does not occur, resulting in adrenocorticotropin-mediated androgen excess and a phenotype resembling polycystic ovary syndrome (PCOS).
配列類似性	Belongs to the short-chain dehydrogenases/reductases (SDR) family.
翻訳後修飾	Glycosylated.
細胞内局在	Endoplasmic reticulum membrane.

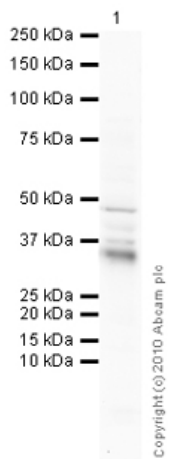
## 画像



Western blot analysis of Sheep liver tissue lysate (5µg/lane) labeling HSD11B1 with ab39364 at 1/500 (16 hours at 4°C). An undiluted HRP-conjugated Goat anti-rabbit IgG polyclonal was used as the secondary antibody.

Western blot - Anti-HSD11B1 antibody (ab39364)

This image is courtesy of an Abreview submitted by Rob Cordery-Cotter. Experimental work performed by Megan A. Walton.



Western blot - HSD11B1 antibody (ab39364)

Anti-HSD11B1 antibody (ab39364) at 1  $\mu$ g/ml  
+ Human liver tissue lysate - total protein  
(ab29889) at 10  $\mu$ g

### Secondary

Goat polyclonal to Rabbit IgG - H&L - Pre-Adsorbed (HRP) at 1/3000 dilution

Developed using the ECL technique.

Performed under reducing conditions.

**Predicted band size:** 32 kDa

**Exposure time:** 16 minutes

HSD11B1 contains a number of potential glycosylation sites (SwissProt) which may explain the higher migration pattern observed.

**Please note:** All products are "FOR RESEARCH USE ONLY AND ARE NOT INTENDED FOR DIAGNOSTIC OR THERAPEUTIC USE"

### Our Abpromise to you: Quality guaranteed and expert technical support

- Replacement or refund for products not performing as stated on the datasheet
- Valid for 12 months from date of delivery
- Response to your inquiry within 24 hours
- We provide support in Chinese, English, French, German, Japanese and Spanish
- Extensive multi-media technical resources to help you
- We investigate all quality concerns to ensure our products perform to the highest standards

If the product does not perform as described on this datasheet, we will offer a refund or replacement. For full details of the Abpromise, please visit <http://www.abcam.co.jp/abpromise> or contact our technical team.

### Terms and conditions

- Guarantee only valid for products bought direct from Abcam or one of our authorized distributors