

## Product datasheet

# Anti-HLA E antibody ab88090

画像数 3

### 製品の概要

製品名	Anti-HLA E antibody
製品の詳細	Mouse polyclonal to HLA E
由来種	Mouse
アプリケーション	<b>適用あり:</b> WB, Flow Cyt
種交差性	<b>交差種:</b> Human
免疫原	Full length human HLA E protein (AAH02578.1).
ポジティブ・コントロール	293 cells, Human spleen tissue lysate and transfected 293T cells.

### 製品の特性

製品の状態	Liquid
保存方法	Shipped at 4°C. Upon delivery aliquot and store at -20°C or -80°C. Avoid repeated freeze / thaw cycles.
バッファー	Preservative: None Constituents: 1X PBS, pH 7.2
精製度	Protein A purified
ポリ/モノ	ポリクローナル
アイソタイプ	IgG

### アプリケーション

Our [Abpromise guarantee](#) covers the use of **ab88090** in the following tested applications.

The application notes include recommended starting dilutions; optimal dilutions/concentrations should be determined by the end user.

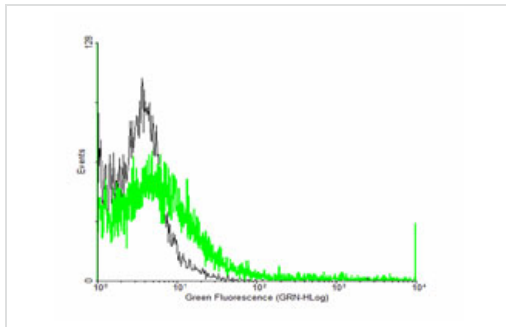
アプリケーション	Abreviews	特記事項
WB		Use a concentration of 1 - 5 µg/ml. Predicted molecular weight: 40 kDa.
Flow Cyt		Use at an assay dependent concentration. <a href="#">ab37355</a> - Mouse polyclonal IgG, is suitable for use as an isotype control with this antibody.

## ターゲット情報

**関連性** HLA E belongs to the HLA class I heavy chain paralogues. This class I molecule is a heterodimer consisting of a heavy chain and a light chain (beta-2 microglobulin). The heavy chain is anchored in the membrane. HLA E binds a restricted subset of peptides derived from the leader peptides of other class I molecules.

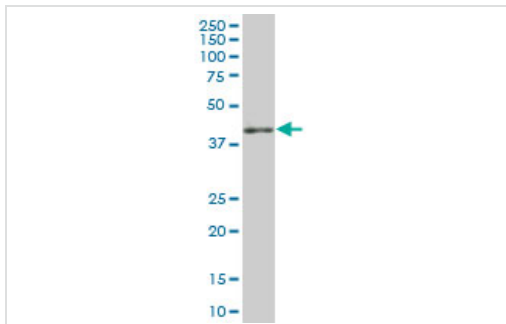
**細胞内局在** Membrane; Single-pass type I membrane protein

## 画像



FACS analysis of negative control 293 cells (Black) and HLA E expressing 293 cells (Green) using ab88090.

Flow Cytometry - HLA E antibody (ab88090)

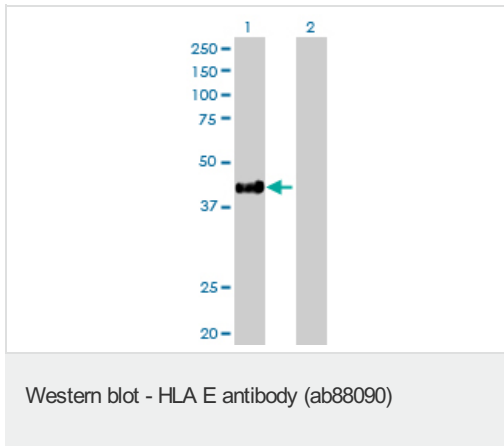


Anti-HLA E antibody (ab88090) at 5 µg/ml + Human spleen tissue lysate at 50 µg

**Predicted band size:** 40 kDa

**Observed band size:** 40 kDa

Western blot - HLA E antibody (ab88090)



**All lanes :** Anti-HLA E antibody (ab88090) at 5 µg/ml

**Lane 1 :** 293T cell line (HLA E transfected lysate)

**Lane 2 :** 293T cell line (Non-transfected lysate)

Lysates/proteins at 50 µg per lane.

**Predicted band size:** 40 kDa

**Observed band size:** 40 kDa

**Please note:** All products are "FOR RESEARCH USE ONLY AND ARE NOT INTENDED FOR DIAGNOSTIC OR THERAPEUTIC USE"

### Our Abpromise to you: Quality guaranteed and expert technical support

- Replacement or refund for products not performing as stated on the datasheet
- Valid for 12 months from date of delivery
- Response to your inquiry within 24 hours
- We provide support in Chinese, English, French, German, Japanese and Spanish
- Extensive multi-media technical resources to help you
- We investigate all quality concerns to ensure our products perform to the highest standards

If the product does not perform as described on this datasheet, we will offer a refund or replacement. For full details of the Abpromise, please visit <http://www.abcam.co.jp/abpromise> or contact our technical team.

### Terms and conditions

- Guarantee only valid for products bought direct from Abcam or one of our authorized distributors