

Product datasheet

Anti-HLA B27 antibody ab93150

1 References [画像数 1](#)

製品の概要

製品名	Anti-HLA B27 antibody
製品の詳細	Rabbit polyclonal to HLA B27
アプリケーション	適用あり: WB, ELISA
種交差性	交差種: Human
免疫原	KLH conjugated synthetic peptide from the N-terminal region of human HLA B27 (NP_005505.2).
ポジティブ・コントロール	A2058 and A375 cell line lysates

製品の特性

製品の状態	Liquid
保存方法	Shipped at 4°C. Store at 4°C (up to 6 months). Store at -20°C long term.
バッファー	Preservative: 0.09% Sodium Azide Constituents: PBS
精製度	Immunogen affinity purified
ポリ/モノ	ポリクローナル
アイソタイプ	IgG

アプリケーション

Our [Abpromise guarantee](#) covers the use of **ab93150** in the following tested applications.

The application notes include recommended starting dilutions; optimal dilutions/concentrations should be determined by the end user.

アプリケーション	Abreviews	特記事項
----------	-----------	------

WB

ELISA

追加情報	ELISA: 1/1000. WB: 1/100 - 1/500. Predicted molecular weight: 40 kDa.
------	--

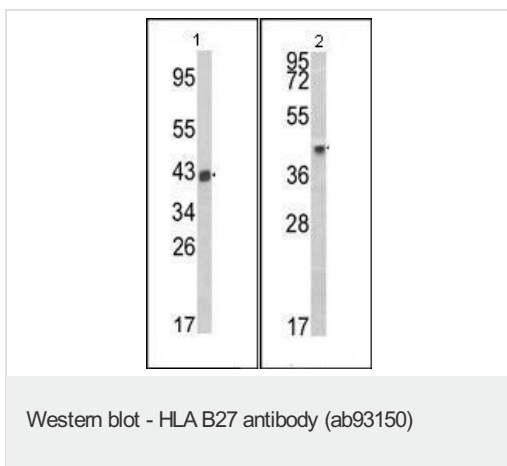
Not yet tested in other applications.

Optimal dilutions/concentrations should be determined by the end user.

## ターゲット情報

<b>関連性</b>	Involved in the presentation of foreign antigens to the immune system. HLA B belongs to the HLA class I heavy chain paralogues. This class I molecule is a heterodimer consisting of a heavy chain and a light chain (beta 2 microglobulin). The heavy chain is anchored in the membrane. Class I molecules play a central role in the immune system by presenting peptides derived from the endoplasmic reticulum lumen. They are expressed in nearly all cells.
<b>細胞内局在</b>	Single-pass type 1 membrane protein

## Anti-HLA B27 antibody 画像



**All lanes :** Anti-HLA B27 antibody (ab93150)  
at 1/100 dilution

**Lane 1 :** A2058 cell line lysate

**Lane 2 :** A375 cell line lysate

Lysates/proteins at 12.5 µg per lane.

**Predicted band size :** 40 kDa

**Please note:** All products are "FOR RESEARCH USE ONLY AND ARE NOT INTENDED FOR DIAGNOSTIC OR THERAPEUTIC USE"

## Our Abpromise to you: Quality guaranteed and expert technical support

- Replacement or refund for products not performing as stated on the datasheet
- Valid for 12 months from date of delivery
- Response to your inquiry within 24 hours
- We provide support in Chinese, English, French, German, Japanese and Spanish
- Extensive multi-media technical resources to help you
- We investigate all quality concerns to ensure our products perform to the highest standards

If the product does not perform as described on this datasheet, we will offer a refund or replacement. For full details of the Abpromise, please visit <http://www.abcam.co.jp/abpromise> or contact our technical team.

## Terms and conditions

- Guarantee only valid for products bought direct from Abcam or one of our authorized distributors