

Product datasheet

Anti-HIV1 p55 + p24 + p17 antibody ab63917

★★★★★ 1 Abreviews 7 References 画像数 2

製品の概要

製品名	Anti-HIV1 p55 + p24 + p17 antibody
製品の詳細	Rabbit polyclonal to HIV1 p55 + p24 + p17
由来種	Rabbit
アプリケーション	適用あり: WB, ELISA
種交差性	Reacts with HIV1.
免疫原	Recombinant protein p55 over-expressed in E.coli using a plasmid carrying the Gag p55 coding region of HIV1 virus.
ポジティブ・コントロール	Extract of MT4 cells infected with HIV1 (LAI strain); HeLa whole cell lysate transfected with a plasmid expressing HIV1 gag.

製品の特性

製品の状態	Liquid
保存方法	Shipped at 4°C. Store at +4°C short term (1-2 weeks). Store at -20°C or -80°C. Avoid freeze / thaw cycle.
バッファー	Preservative: 0.09% Sodium Azide Constituents: Whole serum
精製度	Whole antiserum
ポリモノ	ポリクローナル
アイソタイプ	IgG

アプリケーション

Our [Abpromise guarantee](#) covers the use of **ab63917** in the following tested applications.

The application notes include recommended starting dilutions; optimal dilutions/concentrations should be determined by the end user.

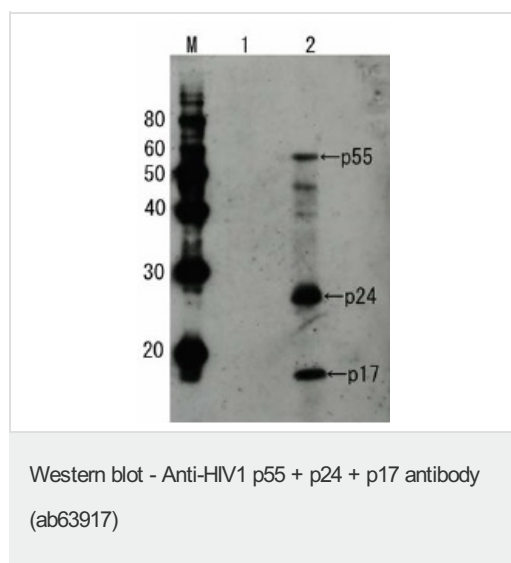
アプリケーション	Abreviews	特記事項
WB	★★★★★	1/2000. Detects a band of approximately 17,24,55 kDa.
ELISA		Use at an assay dependent concentration.

ターゲット情報

関連性

HIV1 performs highly complex orchestrated tasks during the assembly, budding, maturation and infection stages of the viral replication cycle. During viral assembly, the proteins form membrane associations and self-associations that ultimately result in budding of an immature virion from the infected cell. Gag precursors also function during viral assembly to selectively bind and package two plus strands of genomic RNA. p55 is digested by HIV1 protease into intermediate products p41 and p15. p41 is further digested into matrix protein p17 and capsid protein p24. Likewise, p15 is further digested into nucleocapsid protein p7 and to p6 and p1.

画像



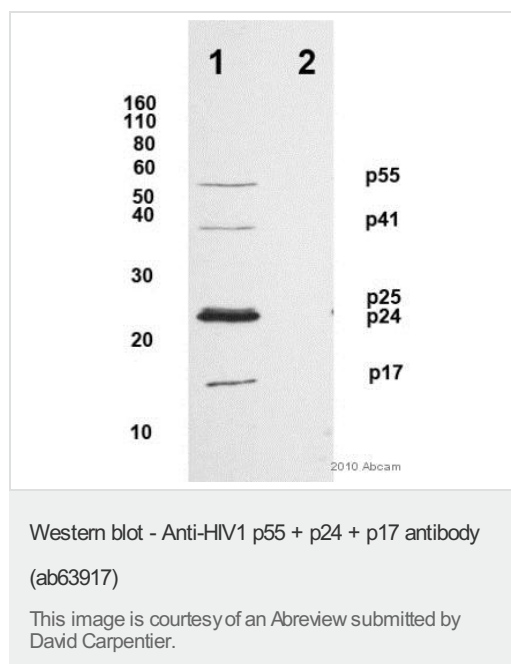
All lanes : Anti-HIV1 p55 + p24 + p17 antibody (ab63917) at 1/2000 dilution

Lane 1 : Extract of MT4 cells

Lane 2 : Extract of MT4 cells infected with HIV1 (LAI strain)

Observed band size: 17,24,55 kDa

Additional bands at: 39 kDa, 45 kDa. We are unsure as to the identity of these extra bands.



All lanes : Anti-HIV1 p55 + p24 + p17 antibody (ab63917) at 1/2000 dilution

Lane 1 : HeLa (human epithelial cell line from cervix adenocarcinoma) whole cell lysate transfected with a plasmid expressing HIV1 gag

Lane 2 : Untransfected HeLa whole cell lysate

Secondary

All lanes : Goat anti-rabbit IgG (whole molecule) HRP polymer at 1/50000 dilution

Our Abpromise to you: Quality guaranteed and expert technical support

- Replacement or refund for products not performing as stated on the datasheet
- Valid for 12 months from date of delivery
- Response to your inquiry within 24 hours

- We provide support in Chinese, English, French, German, Japanese and Spanish
- Extensive multi-media technical resources to help you
- We investigate all quality concerns to ensure our products perform to the highest standards

If the product does not perform as described on this datasheet, we will offer a refund or replacement. For full details of the Abpromise, please visit <http://www.abcam.co.jp/abpromise> or contact our technical team.

Terms and conditions

- Guarantee only valid for products bought direct from Abcam or one of our authorized distributors