

## Product datasheet

# Anti-HIV1 Rev antibody [10] ab25871

1 References [画像数 1](#)

### 製品の概要

製品名	Anti-HIV1 Rev antibody [10]
製品の詳細	Mouse monoclonal [10] to HIV1 Rev
由来種	Mouse
特異性	HIV1 Rev regulatory protein.
アプリケーション	<b>適用あり:</b> ELISA, WB, Radioimmunoprecipitation
種交差性	Reacts with HIV1. Not yet tested in other species.
免疫原	To produce this antibody the recombinant Rev (strain BRU) has been used as immunogen. The peptide sequences were not derived from particular strains of HIV1, but were designed as (artificial) B-clade (strain) consensus sequences. Sequences in Swiss prot belong to particular HIV1 strains. For epitope mapping synthetic peptides were used. <a href="#">Run BLAST with ExPASy</a> <a href="#">Run BLAST with NCBI</a>
エピトープ	Epitope mapped to aa34-40

### 製品の特性

製品の状態	Liquid
保存方法	Shipped at 4°C. Upon delivery aliquot and store at -20°C or -80°C. Avoid repeated freeze / thaw cycles.
バッファー	Preservative: 0.1% Sodium Azide Constituents: PBS, pH 7.4
精製度	Protein G purified
ポリ/モノ	モノクローナル
クローン名	10
アイソタイプ	IgG1

### アプリケーション

Our [Abpromise guarantee](#) covers the use of **ab25871** in the following tested applications.

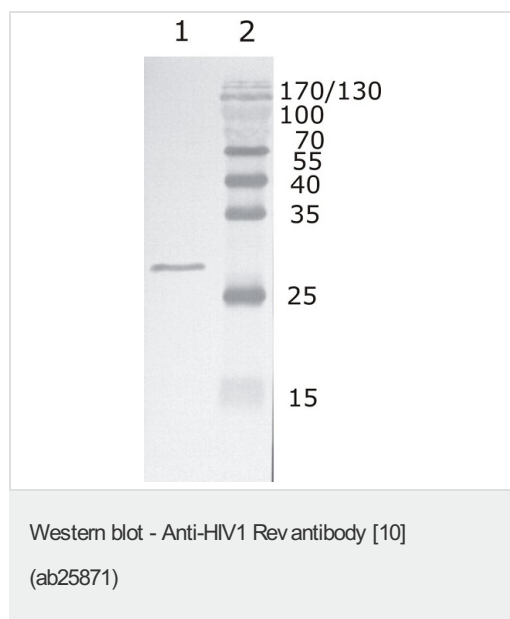
The application notes include recommended starting dilutions; optimal dilutions/concentrations should be determined by the end user.

アプリケーション	Abreviews	特記事項
ELISA		1/10000.
WB		1/500. Predicted molecular weight: 13 kDa.
Radioimmunoprecipitation		Use at an assay dependent dilution.

## ターゲット情報

**関連性** HIV1 expresses the trans-activator protein Rev which is required for virus growth as it promotes the localisation and expression of viral RNA in the cytoplasm. Rev is a model experimental system for studying nuclear transport. The HIV1 Rev protein as viral protein is expressed early in the virus life cycle and thus may be important targets for the immune control of HIV1 infection.

## 画像



**Lane 1** : Anti-HIV1 Rev antibody [10]  
(ab25871)

**Lane 1** : Recombinant HIV1 Rev (B subtype)

**Lane 2** : Protein size marker

**Predicted band size:** 13 kDa

**Please note:** All products are "FOR RESEARCH USE ONLY AND ARE NOT INTENDED FOR DIAGNOSTIC OR THERAPEUTIC USE"

## Our Abpromise to you: Quality guaranteed and expert technical support

- Replacement or refund for products not performing as stated on the datasheet
- Valid for 12 months from date of delivery
- Response to your inquiry within 24 hours
- We provide support in Chinese, English, French, German, Japanese and Spanish
- Extensive multi-media technical resources to help you
- We investigate all quality concerns to ensure our products perform to the highest standards

If the product does not perform as described on this datasheet, we will offer a refund or replacement. For full details of the Abpromise,

please visit <http://www.abcam.co.jp/abpromise> or contact our technical team.

## Terms and conditions

---

- Guarantee only valid for products bought direct from Abcam or one of our authorized distributors