

Product datasheet

Anti-HECW1 antibody ab121265

画像数 2

製品の概要

製品名	Anti-HECW1 antibody
製品の詳細	Rabbit polyclonal to HECW1
アプリケーション	適用あり: IHC-P, ICC/IF
種交差性	交差種: Human
免疫原	antigen sequence, corresponding to amino acids 356-481 of Human HECW1.
ポジティブ・コントロール	Human pancreas tissue; A431 cells.

製品の特性

製品の状態	Liquid
保存方法	Shipped at 4°C. Upon delivery aliquot and store at -20°C. Avoid freeze / thaw cycles.
バッファー	pH: 7.20 Preservative: 0.02% Sodium azide Constituents: 59% PBS, 40% Glycerol
精製度	Immunogen affinity purified
ポリ/モノ	ポリクローナル
アイソタイプ	IgG

アプリケーション

Our [Abpromise guarantee](#) covers the use of **ab121265** in the following tested applications.

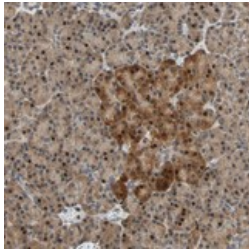
The application notes include recommended starting dilutions; optimal dilutions/concentrations should be determined by the end user.

アプリケーション	Abreviews	特記事項
IHC-P		1/20 - 1/50. Perform heat mediated antigen retrieval with citrate buffer pH 6 before commencing with IHC staining protocol.
ICC/IF		Use a concentration of 1 - 4 µg/ml. Fixation/Permeabilization: PFA/Triton X-100

## ターゲット情報

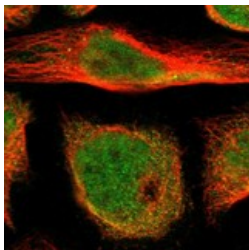
機能	E3 ubiquitin-protein ligase that mediates ubiquitination and subsequent degradation of DVL1. Also targets the mutant SOD1 protein involved in familial amyotrophic lateral sclerosis (FALS). Forms cytotoxic aggregates with DVL1, SSR3 and mutant SOD1 that lead to motor neuron death in FALS.
組織特異性	Predominantly expressed in neurons of adult and fetal brain. Weakly expressed in the kidney.
パスウェイ	Protein modification; protein ubiquitination.
配列類似性	Contains 1 C2 domain. Contains 1 HECT (E6AP-type E3 ubiquitin-protein ligase) domain. Contains 2 WW domains.
細胞内局在	Cytoplasm.

## 画像



ab121265 at 1/25 dilution staining HECW1 in Paraffin-embedded Human pancreas tissue by Immunohistochemistry.

Immunohistochemistry (Formalin/PFA-fixed paraffin-embedded sections) - Anti-HECW1 antibody (ab121265)



ab121265 at 4 µg/ml staining HECW1 in PFA/Triton X-100 fixed/permeabilized A431 cells by Immunofluorescence (green).

Immunocytochemistry/ Immunofluorescence - Anti-HECW1 antibody (ab121265)

**Please note:** All products are "FOR RESEARCH USE ONLY AND ARE NOT INTENDED FOR DIAGNOSTIC OR THERAPEUTIC USE"

## Our Abpromise to you: Quality guaranteed and expert technical support

- Replacement or refund for products not performing as stated on the datasheet
- Valid for 12 months from date of delivery
- Response to your inquiry within 24 hours

- We provide support in Chinese, English, French, German, Japanese and Spanish
- Extensive multi-media technical resources to help you
- We investigate all quality concerns to ensure our products perform to the highest standards

If the product does not perform as described on this datasheet, we will offer a refund or replacement. For full details of the Abpromise, please visit <http://www.abcam.co.jp/abpromise> or contact our technical team.

### **Terms and conditions**

---

- Guarantee only valid for products bought direct from Abcam or one of our authorized distributors