

Product datasheet

Goat Anti-Rabbit IgG H&L (HRP) preadsorbed ab97080

★★★★☆ 1 Abreviews 15 References 画像数 2

製品の概要

製品名	Goat Anti-Rabbit IgG H&L (HRP) preadsorbed
製品の詳細	Goat polyclonal Secondary Antibody to Rabbit IgG - H&L (HRP), pre-adsorbed
由来種	Goat
ターゲット生物種	Rabbit
特異性	By immunoelectrophoresis and ELISA this antibody reacts specifically with Rabbit IgG and with light chains common to other Rabbit immunoglobulins. No antibody was detected against non immunoglobulin serum proteins. Less than 0.1% cross reactivity to bovine, chicken, goat, horse, human, mouse, pig and rat IgG was detected.
アプリケーション	適用あり: ICC, IHC-P, ELISA, WB
吸着処理血清	Chicken, Cow, Horse, Human, Mouse, Pig, Rat more details
標識	HRP

製品の特性

製品の状態	Liquid
保存方法	Shipped at 4°C. Store at +4°C.
バッファー	Preservative: 0.1% Proclin Constituents: 0.2% BSA, PBS
精製度	Immunogen affinity purified
特記事項(精製)	Antiserum was cross absorbed using bovine, chicken, horse, human, mouse, pig and rat immunosorbents to remove cross reactive antibodies. This antibody was isolated by affinity chromatography using antigen coupled to agarose beads and conjugated to Horse Radish Peroxidase (HRP).
ポリ/モノ	ポリクローナル
アイソタイプ	IgG

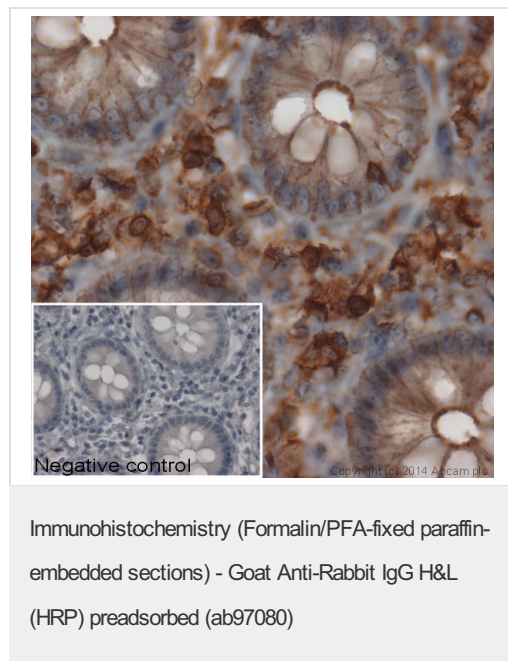
アプリケーション

Our [Abpromise guarantee](#) covers the use of **ab97080** in the following tested applications.

The application notes include recommended starting dilutions; optimal dilutions/concentrations should be determined by the end user.

アプリケーション	Abreviews	特記事項
ICC		Use at an assay dependent dilution.
IHC-P		1/200 - 1/5000.
ELISA		1/10000 - 1/100000. as primary.
WB		1/5000 - 1/50000. Colorimetric: 1/5000 - 1/30000; Chemiluminescent: 1/10000 - 1/50000.

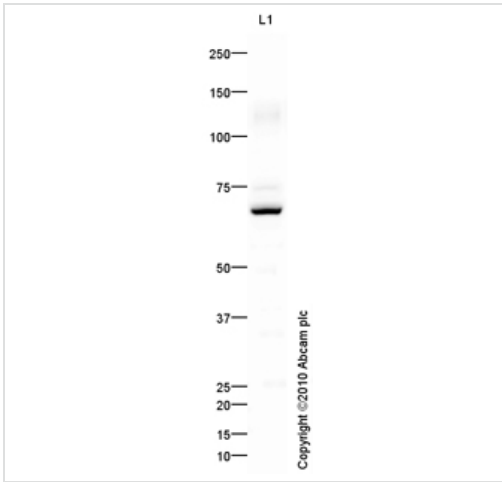
画像



IHC image of beta Actin staining in normal human colon, formalin-fixed and paraffin-embedded tissue*. The section was pre-treated using pressure cooker heat mediated antigen retrieval with sodium citrate buffer (pH6) for 30mins. The section was incubated with [ab8227](#), 3µg/ml overnight at +4°C. An HRP-conjugated secondary (Ab97080, 1/2000 dilution) was used for 1hr at room temperature. The section was counterstained with haematoxylin and mounted with DPX.

The inset negative control image is secondary-only at 1/500 dilution.

*Tissue obtained from the Human Research Tissue Bank, supported by the NIHR Cambridge Biomedical Research Centre



Western blot - Goat polyclonal Secondary Antibody to Rabbit IgG - H&L (HRP), pre-adsorbed (ab97080)

Goat polyclonal Secondary Antibody to Rabbit IgG - H&L (HRP), pre-adsorbed (ab97080) at 1/5000 dilution developed using the ECL technique, with [ab87342](#).

Please note: All products are "FOR RESEARCH USE ONLY AND ARE NOT INTENDED FOR DIAGNOSTIC OR THERAPEUTIC USE"

Our Abpromise to you: Quality guaranteed and expert technical support

- Replacement or refund for products not performing as stated on the datasheet
- Valid for 12 months from date of delivery
- Response to your inquiry within 24 hours
- We provide support in Chinese, English, French, German, Japanese and Spanish
- Extensive multi-media technical resources to help you
- We investigate all quality concerns to ensure our products perform to the highest standards

If the product does not perform as described on this datasheet, we will offer a refund or replacement. For full details of the Abpromise, please visit <http://www.abcam.co.jp/abpromise> or contact our technical team.

Terms and conditions

- Guarantee only valid for products bought direct from Abcam or one of our authorized distributors