

Product datasheet

Anti-Giantin antibody - Golgi Marker ab80864

★★★★☆ 1 Abreviews 9 References 画像数 3

製品の概要

製品名	Anti-Giantin antibody - Golgi Marker
製品の詳細	Rabbit polyclonal to Giantin - Golgi Marker
由来種	Rabbit
アプリケーション	適用あり: IHC-P, ICC/IF
種交差性	交差種: Human
免疫原	Synthetic peptide conjugated to KLH derived from within residues 1250 - 1350 of Human Giantin.Immunogen の所有権に関して
ポジティブ・コントロール	This antibody gave a positive signal in cervical tissue and MCF7 whole cells using immunohistochemistry and immunocytochemistry, respectively.

製品の特性

製品の状態	Liquid
保存方法	Shipped at 4°C. Store at +4°C short term (1-2 weeks). Upon delivery aliquot. Store at -20°C or -80°C. Avoid freeze / thaw cycle.
バッファー	Preservative: 0.02% Sodium Azide Constituents: 1% BSA, PBS, pH 7.4
精製度	Immunogen affinity purified
ポリ/モノ	ポリクローナル
アイソタイプ	IgG

アプリケーション

Our [Abpromise guarantee](#) covers the use of **ab80864** in the following tested applications.

The application notes include recommended starting dilutions; optimal dilutions/concentrations should be determined by the end user.

アプリケーション	Abreviews	特記事項
IHC-P		Use a concentration of 0.1 - 1 µg/ml. Perform heat mediated antigen retrieval with citrate buffer pH 6 before commencing with IHC staining protocol.

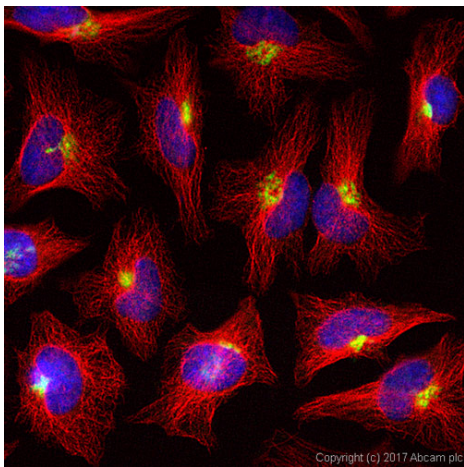
アプリケーション	Abreviews	特記事項
----------	-----------	------

ICC/IF ★★★★★ Use a concentration of 1 µg/ml.

ターゲット情報

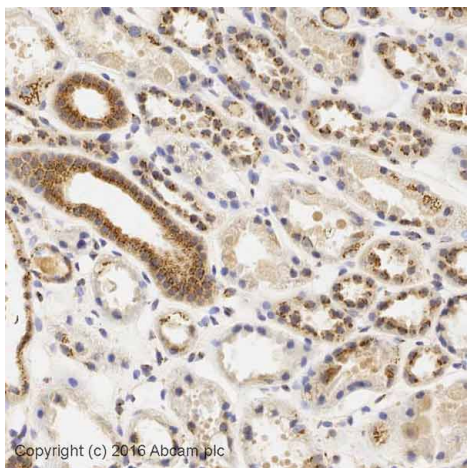
機能	May participate in forming intercisternal cross-bridges of the Golgi complex.
細胞内局在	Golgi apparatus membrane.

画像



Immunocytochemistry/ Immunofluorescence - Anti-Giantin antibody - Golgi Marker (ab80864)

ab80864 stained in HeLa cells. Cells were fixed with 100% methanol (5min) at room temperature and incubated with PBS containing 10% goat serum, 0.3 M glycine, 1% BSA and 0.1% triton for 1h at room temperature to permeabilise the cells and block non-specific protein-protein interactions. The cells were then incubated with the antibody ab80864 at 1µg/ml and [ab7291](#) (Mouse monoclonal [DM1A] to alpha Tubulin - Loading Control) at 1/1000 dilution overnight at +4°C. The secondary antibodies were [ab150120](#) (pseudo-colored red) and [ab150081](#) (colored green) used at 1 ug/ml for 1 hour at room temperature. DAPI was used to stain the cell nuclei (colored blue) at a concentration of 1.43µM for 1 hour at room temperature.

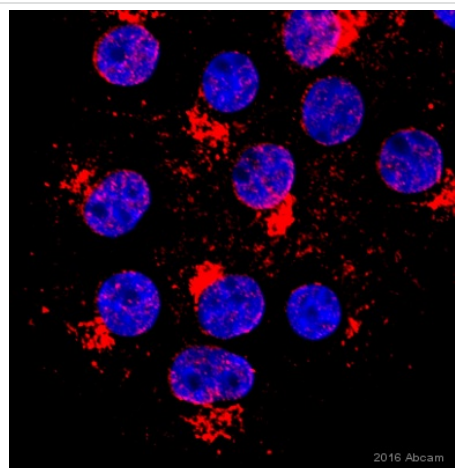


Immunohistochemistry (Formalin/PFA-fixed paraffin-embedded sections) - Anti-Giantin antibody - Golgi Marker (ab80864)

IHC image of ab80864 staining in human cervix carcinoma formalin fixed paraffin embedded tissue section*, performed on a Leica Bond™ system using the standard protocol F. The section was pre-treated using heat mediated antigen retrieval with sodium citrate buffer (pH6, epitope retrieval solution 1) for 20 mins. The section was then incubated with ab80864, 0.1µg/ml for 15 mins at room temperature and detected using an HRP conjugated compact polymer system. DAB was used as the chromogen. The section was then counterstained with haematoxylin and mounted with DPX

For other IHC staining systems (automated and non-automated) customers should optimize variable parameters such as antigen retrieval conditions, primary antibody concentration and antibody incubation times.

*Tissue obtained from the Human Research Tissue Bank, supported by the NIHR Cambridge Biomedical Research Centre



Immunocytochemistry/ Immunofluorescence - Anti-Giantin antibody - Golgi Marker (ab80864)

This image is courtesy of an anonymous Abreview

Ab80864 staining Giantin in WIF-B cells (hepatoma-derived hybrid cell line) by ICC/IF (Immunocytochemistry/Immunofluorescence). Cells were fixed with formaldehyde; permeabilized with 0.2% Triton X-100 and blocked with 1% Donkey serum in 0.1% PBST for 1 hour at 22°C. Samples were incubated at 1/25 dilution for 3 hours at 22°C. An Alexa Fluor® 594 Donkey anti rabbit was used as the secondary antibody at 1/200 dilution.

Please note: All products are "FOR RESEARCH USE ONLY AND ARE NOT INTENDED FOR DIAGNOSTIC OR THERAPEUTIC USE"

Our Abpromise to you: Quality guaranteed and expert technical support

- Replacement or refund for products not performing as stated on the datasheet
- Valid for 12 months from date of delivery
- Response to your inquiry within 24 hours

- We provide support in Chinese, English, French, German, Japanese and Spanish
- Extensive multi-media technical resources to help you
- We investigate all quality concerns to ensure our products perform to the highest standards

If the product does not perform as described on this datasheet, we will offer a refund or replacement. For full details of the Abpromise, please visit <http://www.abcam.co.jp/abpromise> or contact our technical team.

Terms and conditions

- Guarantee only valid for products bought direct from Abcam or one of our authorized distributors