

Product datasheet

Anti-Gemin 4 antibody ab70750

★★★★☆ 1 Abreviews [画像数 3](#)

製品の概要

製品名	Anti-Gemin 4 antibody
製品の詳細	Rabbit polyclonal to Gemin 4
アプリケーション	適用あり: IHC-P, WB, IP
種交差性	交差種: Human 交差が予測される動物種: Chimpanzee, Gorilla, Orangutan
免疫原	Synthetic peptide corresponding to a region between residue 1010 and the C-terminus (residue 1058) of Human Gemin 4 (NP_056536.1).
ポジティブ・コントロール	Whole cell lysate from HeLa and 293T cells.

製品の特性

製品の状態	Liquid
保存方法	Shipped at 4°C. Upon delivery aliquot and store at -20°C. Avoid freeze / thaw cycles.
バッファー	Preservative: 0.09% Sodium Azide Constituents: 0.1% BSA, Tris buffered saline
精製度	Immunogen affinity purified
ポリ/モノ	ポリクローナル
アイソタイプ	IgG

アプリケーション

Our [Abpromise guarantee](#) covers the use of **ab70750** in the following tested applications.

The application notes include recommended starting dilutions; optimal dilutions/concentrations should be determined by the end user.

アプリケーション	Abreviews	特記事項
IHC-P		1/100 - 1/500. Perform heat mediated antigen retrieval with Tris/EDTA buffer pH 9.0 before commencing with IHC staining protocol.
WB	★★★★☆	1/2000 - 1/10000. Detects a band of approximately 117 kDa (predicted molecular weight: 120 kDa).

アプリケーション	Abreviews	特記事項
----------	-----------	------

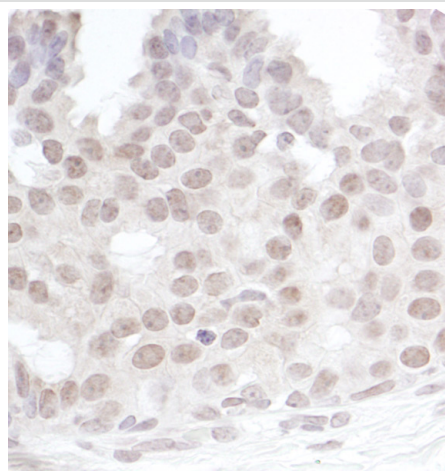
IP Use at 2-5 µg/mg of lysate.

ターゲット情報

関連性 GEMIN 4 is part of the SMN complex and plays an essential role in spliceosomal snRNP assembly in the cytoplasm. It is required for pre mRNA splicing in the nucleus.

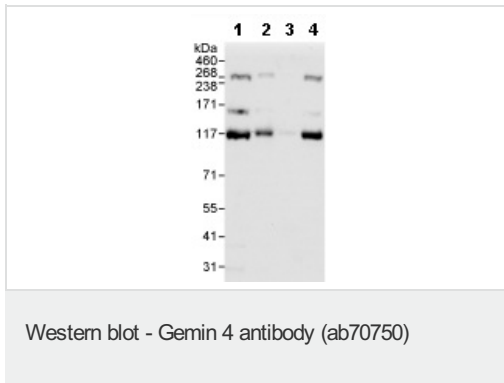
細胞内局在 Cytoplasmic and nuclear.

画像



Immunohistochemistry (Formalin/PFA-fixed paraffin-embedded sections) analysis of human breast carcinoma tissue labelling Gemin 4 with ab70750 at 1/200 (1µg/ml). Detection: DAB.

Immunohistochemistry (Formalin/PFA-fixed paraffin-embedded sections) - Anti-Gemin 4 antibody (ab70750)



All lanes : Anti-Gemin 4 antibody (ab70750)
at 1/5000 dilution

Lane 1 : HeLa whole cell lysate at 50 µg

Lane 2 : HeLa whole cell lysate at 15 µg

Lane 3 : HeLa whole cell lysate at 5 µg

Lane 4 : 293T whole cell lysate at 50 µg

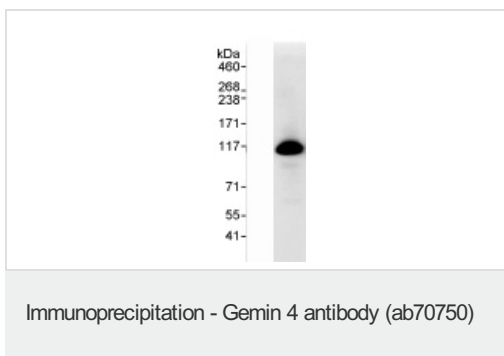
Developed using the ECL technique

Predicted band size : 120 kDa

Observed band size : 117 kDa

Additional bands at : 160 kDa, 270 kDa. We are unsure as to the identity of these extra bands.

Exposure time : 30 seconds



Detection of Gemin 4 by Western Blot of Immunoprecipitate. ab70750 at 1µg/ml staining Gemin 4 in HeLa whole cell lysate immunoprecipitated using ab70750 at 3µg/mg lysate (1 mg/IP; 20% of IP loaded/lane). Detection: chemiluminescence with exposure time of 30 seconds.

Please note: All products are "FOR RESEARCH USE ONLY AND ARE NOT INTENDED FOR DIAGNOSTIC OR THERAPEUTIC USE"

Our Abpromise to you: Quality guaranteed and expert technical support

- Replacement or refund for products not performing as stated on the datasheet
- Valid for 12 months from date of delivery
- Response to your inquiry within 24 hours
- We provide support in Chinese, English, French, German, Japanese and Spanish
- Extensive multi-media technical resources to help you
- We investigate all quality concerns to ensure our products perform to the highest standards

If the product does not perform as described on this datasheet, we will offer a refund or replacement. For full details of the Abpromise, please visit <http://www.abcam.co.jp/abpromise> or contact our technical team.

Terms and conditions

- Guarantee only valid for products bought direct from Abcam or one of our authorized distributors