

Product datasheet

Anti-Gemin 2 antibody ab117639

画像数 3

製品の概要

製品名	Anti-Gemin 2 antibody
製品の詳細	Rabbit polyclonal to Gemin 2
由来種	Rabbit
アプリケーション	適用あり: WB, ELISA, IHC-P, ICC
種交差性	交差種: Human 交差が予測される動物種: Mouse, Rat
免疫原	Synthetic peptide from the C terminus of Human Gemin 2, conjugated to KLH.
ポジティブ・コントロール	Human tonsil, thymus or colon nerve tissue.

製品の特性

製品の状態	Liquid
保存方法	Shipped at 4°C. Store at +4°C short term (1-2 weeks). Store at -20°C or -80°C. Avoid freeze / thaw cycle.
バッファー	Preservative: 0.02% Sodium azide Constituent: 99% PBS
精製度	Immunogen affinity purified
ポリ/モノ	ポリクローナル
アイソタイプ	IgG

アプリケーション

Our [Abpromise guarantee](#) covers the use of **ab117639** in the following tested applications.

The application notes include recommended starting dilutions; optimal dilutions/concentrations should be determined by the end user.

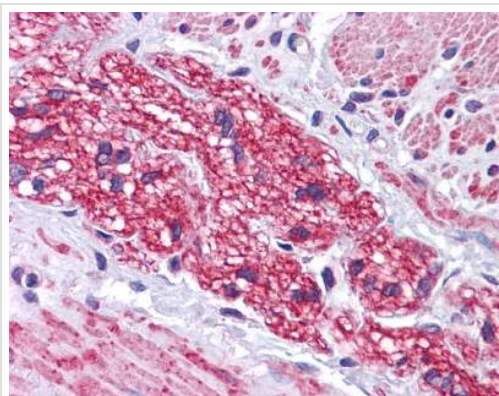
アプリケーション	Abreviews	特記事項
WB		Use a concentration of 0.5 - 1 µg/ml. Predicted molecular weight: 31 kDa.
ELISA		Use at an assay dependent concentration.

アプリケーション	Abreviews	特記事項
IHC-P		Use a concentration of 5 µg/ml.
ICC		Use a concentration of 4 µg/ml.

ターゲット情報

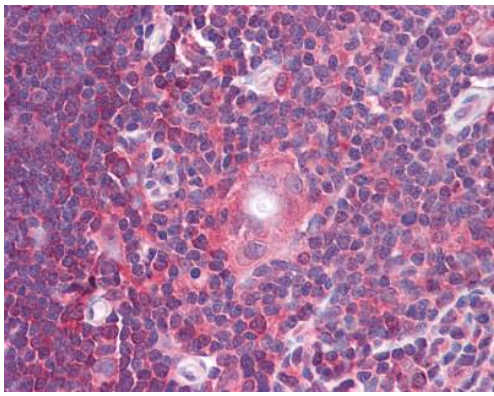
機能	The SMN complex plays an essential role in spliceosomal snRNP assembly in the cytoplasm and is required for pre-mRNA splicing in the nucleus.
配列類似性	Belongs to the gemin-2 family.
細胞内局在	Nucleus > gem. Cytoplasm. Localized in subnuclear structures next to coiled bodies, called gems, which are highly enriched in spliceosomal snRNPs. Also found in the cytoplasm.

画像



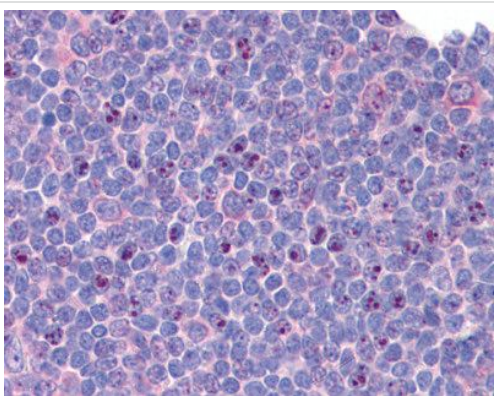
Human Colon Nerve, Formalin-Fixed, Paraffin-Embedded tissue, stained with ab117639 at 5µg/ml.

Immunohistochemistry (Formalin/PFA-fixed paraffin-embedded sections) - Anti-Gemin 2 antibody (ab117639)



Human thymus, Formalin-Fixed, Paraffin-Embedded tissue, stained with ab117639 at 5µg/ml.

Immunohistochemistry (Formalin/PFA-fixed paraffin-embedded sections) - Anti-Gemin 2 antibody (ab117639)



Human tonsil, Formalin-Fixed, Paraffin-Embedded tissue, stained with ab117639 at 5µg/ml.

Immunohistochemistry (Formalin/PFA-fixed paraffin-embedded sections) - Anti-Gemin 2 antibody (ab117639)

Please note: All products are "FOR RESEARCH USE ONLY AND ARE NOT INTENDED FOR DIAGNOSTIC OR THERAPEUTIC USE"

Our Abpromise to you: Quality guaranteed and expert technical support

- Replacement or refund for products not performing as stated on the datasheet
- Valid for 12 months from date of delivery
- Response to your inquiry within 24 hours
- We provide support in Chinese, English, French, German, Japanese and Spanish
- Extensive multi-media technical resources to help you
- We investigate all quality concerns to ensure our products perform to the highest standards

If the product does not perform as described on this datasheet, we will offer a refund or replacement. For full details of the Abpromise, please visit <http://www.abcam.co.jp/abpromise> or contact our technical team.

Terms and conditions

- Guarantee only valid for products bought direct from Abcam or one of our authorized distributors