

Product datasheet

GRB10 overexpression 293T lysate (whole cell) ab94152

画像数 2

製品の概要

製品名	GRB10 overexpression 293T lysate (whole cell)
特記事項	ab94152 is a 293T cell transfected lysate in which Human GRB10 has been transiently over-expressed using a pCMV-GRB10 plasmid. The lysate is provided in 1X Sample Buffer. Note: For more details about how the transfected lysate was prepared view preparation notes
アプリケーション	適用あり: WB

法規制情報

医薬用外劇物

製品の特性

製品の状態	Liquid
保存方法	Shipped on dry ice. Upon delivery aliquot and store at -20°C. Avoid freeze / thaw cycles.
バッファー	pH: 6.80 Constituent: 100% 1x Sample Buffer
精製度	Whole Cell Lysate
背景	Function: Adapter protein which modulates coupling of a number of cell surface receptor kinases with specific signaling pathways. Binds to, and suppress signals from, activated receptors tyrosine kinases, including the insulin (INSR) and insulin-like growth factor (IGF1R) receptors. The inhibitory effect can be achieved by 2 mechanisms: interference with the signaling pathway and increased receptor degradation. Delays and reduces AKT1 phosphorylation in response to insulin stimulation. Blocks association between INSR and IRS1 and IRS2 and prevents insulin-stimulated IRS1 and IRS2 tyrosine phosphorylation. Recruits NEDD4 to IGF1R, leading to IGF1R ubiquitination, increased internalization and degradation by both the proteasomal and lysosomal pathways. May play a role in mediating insulin-stimulated ubiquitination of INSR, leading to proteasomal degradation. Negatively regulates Wnt signaling by interacting with LRP6 intracellular portion and interfering with the binding of AXIN1 to LRP6. Positive regulator of the KDR/VEGFR-2 signaling pathway. May inhibit NEDD4-mediated degradation of KDR/VEGFR-2. Tissue specificity: Widely expressed in fetal and adult tissues, including fetal and postnatal liver, lung, kidney, skeletal muscle, heart, spleen, skin and brain. Similarity: Belongs to the GRB7/10/14 family. Contains 1 PH domain. Contains 1 Ras-associating domain. Contains 1 SH2 domain. Domain: The PH domain binds relatively non-specifically to several

phosphoinositides, including PI(5)P, PI(4,5)P2, PI(3,4)P2 and PI(3,4,5)P3, with modest affinities.
PTM: phosphorylated on serine residues upon EGF, FGF and PDGF stimulation.

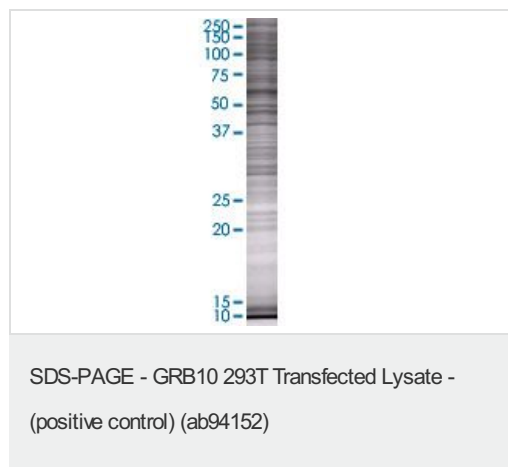
アプリケーション

Our [Abpromise guarantee](#) covers the use of **ab94152** in the following tested applications.

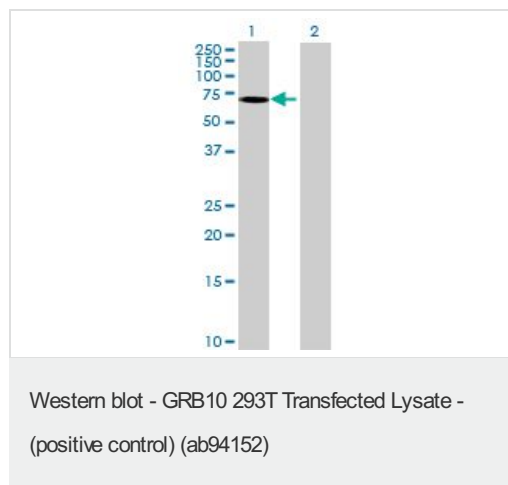
The application notes include recommended starting dilutions; optimal dilutions/concentrations should be determined by the end user.

アプリケーション	Abreviews	特記事項
WB		Use at an assay dependent dilution.

画像



ab94152 at 15µg/lane on an SDS-PAGE gel.



All lanes : Anti-GRB10 antibody ([ab55153](#)) at
1/500 dilution

Lane 1 : GRB10 overexpression 293T lysate
(whole cell) (ab94152)

Lane 2 : 293T Non Transfected Lysate

Lysates/proteins at 25 µg per lane.

Secondary

All lanes : Goat Anti-mouse IgG (H and L)
HRP conjugated at 1/2500 dilution

Please note: All products are "FOR RESEARCH USE ONLY AND ARE NOT INTENDED FOR DIAGNOSTIC OR THERAPEUTIC USE"

Our Abpromise to you: Quality guaranteed and expert technical support

- Replacement or refund for products not performing as stated on the datasheet

- Valid for 12 months from date of delivery
- Response to your inquiry within 24 hours

- We provide support in Chinese, English, French, German, Japanese and Spanish
- Extensive multi-media technical resources to help you
- We investigate all quality concerns to ensure our products perform to the highest standards

If the product does not perform as described on this datasheet, we will offer a refund or replacement. For full details of the Abpromise, please visit <http://www.abcam.co.jp/abpromise> or contact our technical team.

Terms and conditions

- Guarantee only valid for products bought direct from Abcam or one of our authorized distributors