

Product datasheet

Anti-GPCR GPR20 antibody ab75559

画像数 3

製品の概要

製品名	Anti-GPCR GPR20 antibody
製品の詳細	Rabbit polyclonal to GPCR GPR20
特異性	ab75559 detects endogenous levels of total GPCR GPR20 protein.
アプリケーション	適用あり: WB, ELISA, IHC-P, ICC/IF
種交差性	交差種: Human
免疫原	Synthesized peptide derived from an internal sequence of human GPCR GPR20
ポジティブ・コントロール	IHC-P: human brain tissue WB: extracts from LOVO cells ICC/IF: A549 cells

製品の特性

製品の状態	Liquid
保存方法	Shipped at 4°C. Upon delivery aliquot and store at -20°C. Avoid freeze / thaw cycles.
バッファー	Preservative: 0.02% Sodium Azide Constituents: 50% Glycerol, PBS (without Mg ²⁺ and Ca ²⁺), 150mM Sodium chloride, pH 7.4
精製度	Immunogen affinity purified
特記事項 (精製)	The antibody was affinity purified from rabbit antiserum by affinity chromatography using epitope specific immunogen.
ポリ/モノ	ポリクローナル
アイソタイプ	IgG

アプリケーション

Our [Abpromise guarantee](#) covers the use of **ab75559** in the following tested applications.

The application notes include recommended starting dilutions; optimal dilutions/concentrations should be determined by the end user.

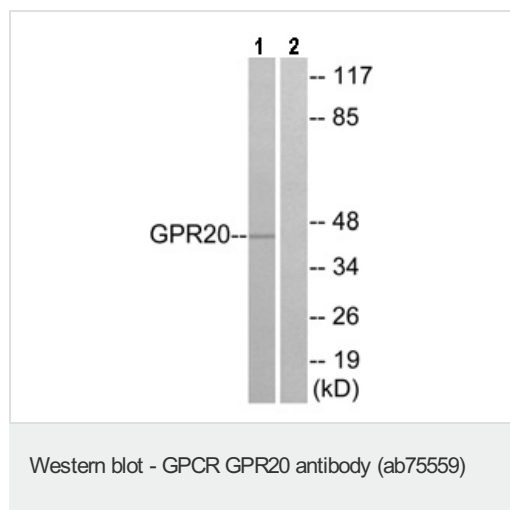
アプリケーション	Abreviews	特記事項
WB		1/500 - 1/1000. Predicted molecular weight: 38 kDa.
ELISA		1/5000.

アプリケーション	Abreviews	特記事項
IHC-P		1/50 - 1/100.
ICC/IF		1/500 - 1/1000.

ターゲット情報

機能	Orphan receptor with constitutive G(i) signaling activity that activate cyclic AMP.
組織特異性	Ubiquitous with highest levels in intestinal tissues. In the brain detected in thalamus, putamen, and caudate, but not in frontal cortex, pons and hypothalamus.
配列類似性	Belongs to the G-protein coupled receptor 1 family.
細胞内局在	Cell membrane.

画像



All lanes : Anti-GPCR GPR20 antibody (ab75559) at 1/500 dilution

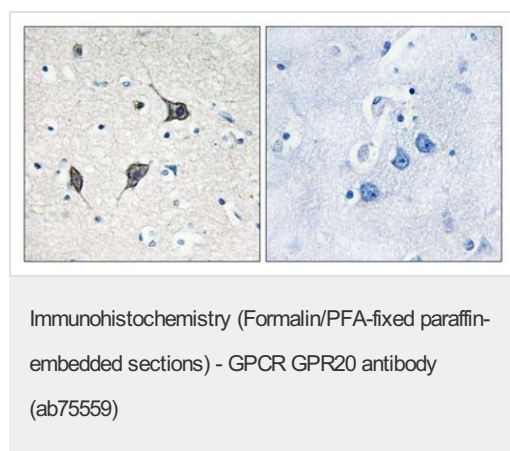
Lane 1 : extracts from LOVO cells

Lane 2 : extracts from LOVO cells with immunizing peptide at 5 µg

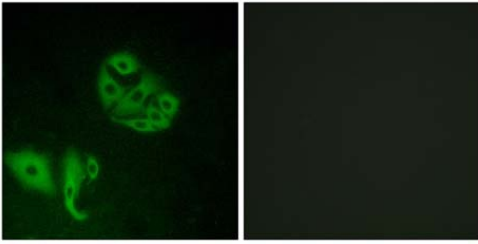
Lysates/proteins at 20 µg per lane.

Predicted band size : 38 kDa

Observed band size : 42 kDa



Left panel: immunohistochemistry analysis of paraffin-embedded human brain tissue using 1/50 ab75559; Right panel: same, after pre-incubation with the immunizing peptide.



Left panel: immunofluorescence analysis of A549 cells, using 1/500 ab75559; Right panel: same, after pre-incubation with the immunizing peptide.

Immunocytochemistry/ Immunofluorescence - GPCR
GPR20 antibody (ab75559)

Please note: All products are "FOR RESEARCH USE ONLY AND ARE NOT INTENDED FOR DIAGNOSTIC OR THERAPEUTIC USE"

Our Abpromise to you: Quality guaranteed and expert technical support

- Replacement or refund for products not performing as stated on the datasheet
- Valid for 12 months from date of delivery
- Response to your inquiry within 24 hours
- We provide support in Chinese, English, French, German, Japanese and Spanish
- Extensive multi-media technical resources to help you
- We investigate all quality concerns to ensure our products perform to the highest standards

If the product does not perform as described on this datasheet, we will offer a refund or replacement. For full details of the Abpromise, please visit <http://www.abcam.co.jp/abpromise> or contact our technical team.

Terms and conditions

- Guarantee only valid for products bought direct from Abcam or one of our authorized distributors