

Product datasheet

Anti-GPCR GPR102 antibody ab93907

画像数 2

製品の概要

製品名	Anti-GPCR GPR102 antibody
製品の詳細	Rabbit polyclonal to GPCR GPR102
由来種	Rabbit
アプリケーション	適用あり: IHC-P
種交差性	交差種: Human
免疫原	Synthetic peptide from the C terminal domain of Human GPCR GPR102, conjugated to KLH.
ポジティブ・コントロール	Human pancreas and brain cerebellum

製品の特性

製品の状態	Liquid
保存方法	Shipped at 4°C. Upon delivery aliquot and store at -80°C. Avoid freeze / thaw cycles.
バッファー	Preservative: 0.1% Sodium Azide Constituents: PBS
精製度	Immunogen affinity purified
特記事項(精製)	Immunoaffinity Chromatography
ポリ/モノ	ポリクローナル
アイソタイプ	IgG

アプリケーション

Our [Abpromise guarantee](#) covers the use of **ab93907** in the following tested applications.

The application notes include recommended starting dilutions; optimal dilutions/concentrations should be determined by the end user.

アプリケーション	Abreviews	特記事項
----------	-----------	------

IHC-P

追加情報

IHC-P: Use at a concentration of 5 µg/ml. Proteinase K digestion for antigen retrieval is required before commencing with IHC staining protocol.

Not yet tested in other applications.

Optimal dilutions/concentrations should be determined by the end user.

ターゲット情報

機能

Orphan receptor. Could be a receptor for trace amines. Trace amines are biogenic amines present in very low levels in mammalian tissues. Although some trace amines have clearly defined roles as neurotransmitters in invertebrates, the extent to which they function as true neurotransmitters in vertebrates has remained speculative. Trace amines are likely to be involved in a variety of physiological functions that have yet to be fully understood.

組織特異性

Expressed in kidney and amygdala. Not expressed in other tissues or brain regions tested.

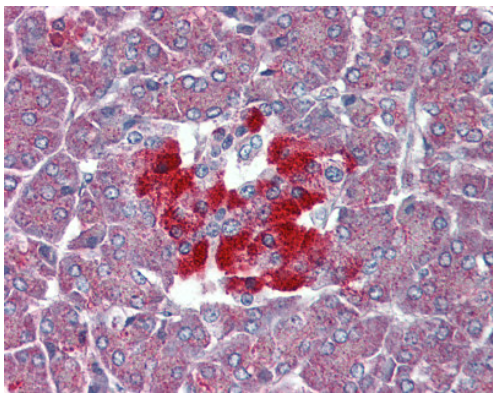
配列類似性

Belongs to the G-protein coupled receptor 1 family.

細胞内局在

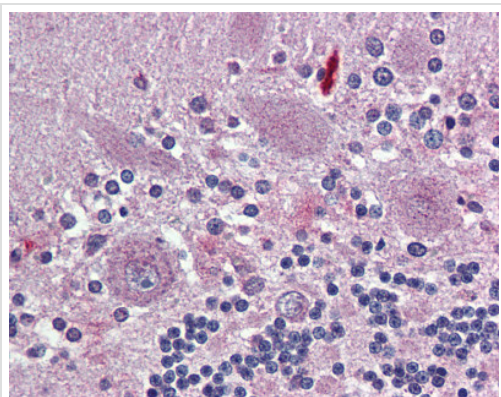
Cell membrane.

画像



ab93907, at a concentration of 5 µg/ml, staining GPCR GPR102 in formalin fixed, paraffin embedded Human pancreas tissue by Immunohistochemistry.

Immunohistochemistry (Formalin/PFA-fixed paraffin-embedded sections) - Anti-GPCR GPR102 antibody (ab93907)



Immunohistochemistry (Formalin/PFA-fixed paraffin-embedded sections) - Anti-GPCR GPR102 antibody (ab93907)

ab93907, at a concentration of 5 µg/ml, staining GPCR GPR102 in formalin fixed, paraffin embedded Human brain (cerebellum) tissue by Immunohistochemistry.

Please note: All products are "FOR RESEARCH USE ONLY AND ARE NOT INTENDED FOR DIAGNOSTIC OR THERAPEUTIC USE"

Our Abpromise to you: Quality guaranteed and expert technical support

- Replacement or refund for products not performing as stated on the datasheet
- Valid for 12 months from date of delivery
- Response to your inquiry within 24 hours
- We provide support in Chinese, English, French, German, Japanese and Spanish
- Extensive multi-media technical resources to help you
- We investigate all quality concerns to ensure our products perform to the highest standards

If the product does not perform as described on this datasheet, we will offer a refund or replacement. For full details of the Abpromise, please visit <http://www.abcam.co.jp/abpromise> or contact our technical team.

Terms and conditions

- Guarantee only valid for products bought direct from Abcam or one of our authorized distributors