


Product datasheet

Anti-GP210 antibody ab15601

画像数 2

製品の概要

製品名	Anti-GP210 antibody
製品の詳細	Rabbit polyclonal to GP210
アプリケーション	適用あり: ICC/IF, WB
種交差性	交差種: Mouse, Rat, Human, Monkey 交差が予測される動物種: Mammal 
免疫原	Fusion protein (Rat) (C terminal).
ポジティブ・コントロール	rat liver
特記事項	Storage in frost-free freezers is not recommended.

製品の特性

製品の状態	Liquid
保存方法	Shipped at 4°C. Store at +4°C short term (1-2 weeks). Upon delivery aliquot. Store at -20°C or -80°C. Avoid freeze / thaw cycle.
バッファー	Preservative: 0.1% Sodium Azide Constituents: Whole serum
精製度	Whole antiserum
ポリ/モノ	ポリクローナル
アイソタイプ	IgG

アプリケーション

Our [Abpromise guarantee](#) covers the use of **ab15601** in the following tested applications.

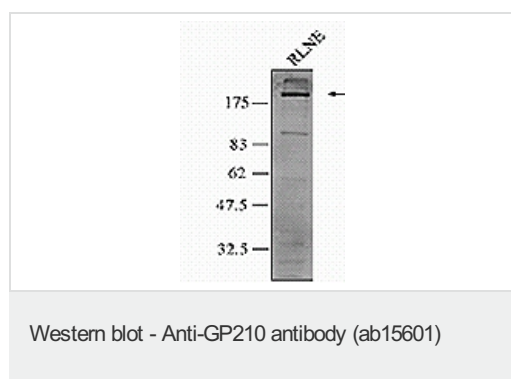
The application notes include recommended starting dilutions; optimal dilutions/concentrations should be determined by the end user.

アプリケーション	Abreviews	特記事項
ICC/IF		Use at an assay dependent dilution.
WB		1/1000. Predicted molecular weight: 210 kDa.

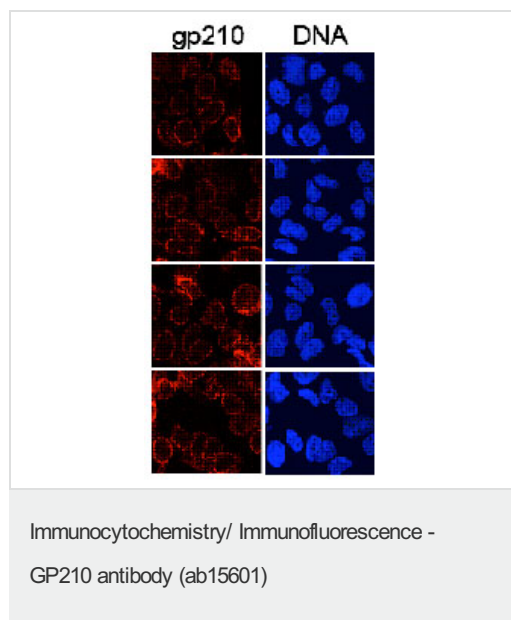
ターゲット情報

機能	Nucleoporin essential for nuclear pore assembly and fusion, nuclear pore spacing, as well as structural integrity.
組織特異性	Ubiquitous expression, with highest levels in lung, liver, pancreas, testis, and ovary, intermediate levels in brain, kidney, and spleen, and lowest levels in heart and skeletal muscle.
配列類似性	Belongs to the NUP210 family.
翻訳後修飾	N-glycosylated, but not all potential glycosylation sites may be used. Contains high-mannose type oligosaccharides. Phosphorylated at Ser-1881 in mitosis specifically; not phosphorylated in interphase.
細胞内局在	Nucleus > nuclear pore complex. Nucleus membrane. Endoplasmic reticulum membrane.

画像



Predicted band size : 210 kDa



HeLa cells grown on coverslips were washed twice with PBS and permeabilized with 0.2% Triton X-100 in PBS for 2 min at room temperature. Following 2 PBS washes, the coverslips were fixed with 3.7% formaldehyde and subsequently blocked in 2% skim milk powder in PBS-T (PBS containing 0.1% Tween 20) for 2 hrs. For detection of gp210, ab15601 was diluted 1:500-1:1000 in 2% skim milk powder in PBS-T and incubated on the coverslips for 1 hour at RT. Following incubation with primary antibodies, coverslips were washed three times with PBS-T over a period of 45 min. Antibody binding was detected with donkey anti-rabbit antibodies conjugated to Cy3 at a dilution of 1:2500.

Please note: All products are "FOR RESEARCH USE ONLY AND ARE NOT INTENDED FOR DIAGNOSTIC OR THERAPEUTIC USE"

Our Abpromise to you: Quality guaranteed and expert technical support

- Replacement or refund for products not performing as stated on the datasheet
- Valid for 12 months from date of delivery
- Response to your inquiry within 24 hours

- We provide support in Chinese, English, French, German, Japanese and Spanish
- Extensive multi-media technical resources to help you
- We investigate all quality concerns to ensure our products perform to the highest standards

If the product does not perform as described on this datasheet, we will offer a refund or replacement. For full details of the Abpromise, please visit <http://www.abcam.co.jp/abpromise> or contact our technical team.

Terms and conditions

- Guarantee only valid for products bought direct from Abcam or one of our authorized distributors