

## Product datasheet

# Anti-GM130 antibody - Drosophila Golgi/Cis-Golgi Marker ab30637

★★★★☆ 3 Abreviews 36 References 画像数 4

### 製品の概要

製品名	Anti-GM130 antibody - Drosophila Golgi/Cis-Golgi Marker
製品の詳細	Rabbit polyclonal to GM130 - Drosophila Golgi/Cis-Golgi Marker
アプリケーション	適用あり: ICC/IF, WB
種交差性	交差種: Drosophila melanogaster
免疫原	Synthetic peptide conjugated to KLH derived from within residues 750 to the C-terminus of Fruit fly (Drosophila melanogaster) GM130. Immunogen の所有権に関して (Peptide available as <a href="#">ab32335</a> .)
ポジティブ・コントロール	Drosophila S2 Cells

### 製品の特性

製品の状態	Liquid
保存方法	Shipped at 4°C. Store at +4°C short term (1-2 weeks). Upon delivery aliquot. Store at -20°C or -80°C. Avoid freeze / thaw cycle.
バッファー	pH: 7.40 Preservative: 0.02% Sodium azide Constituents: PBS, 1% BSA  Batches of this product that have a concentration < 1mg/ml may have BSA added as a stabilising agent. If you would like information about the formulation of a specific lot, please contact our scientific support team who will be happy to help.
精製度	Immunogen affinity purified
ポリ/モノ	ポリクローナル
アイソタイプ	IgG

### アプリケーション

Our [Abpromise guarantee](#) covers the use of **ab30637** in the following tested applications.

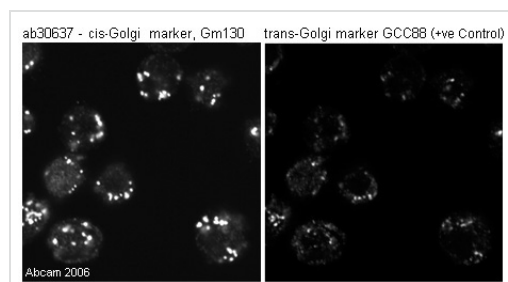
The application notes include recommended starting dilutions; optimal dilutions/concentrations should be determined by the end user.

アプリケーション	Abreviews	特記事項
ICC/IF	★★★★★	Use a concentration of 1 µg/ml.
WB	★★★★☆	Use a concentration of 0.1 µg/ml. Detects a band of approximately 95 kDa (predicted molecular weight: 95 kDa).

## ターゲット情報

機能	Golgi auto-antigen; probably involved in maintaining cis-Golgi structure.
配列類似性	Belongs to the GOLGA2 family.
ドメイン	Extended rod-like protein with coiled-coil domains.
細胞内局在	Golgi apparatus > Golgi stack membrane.

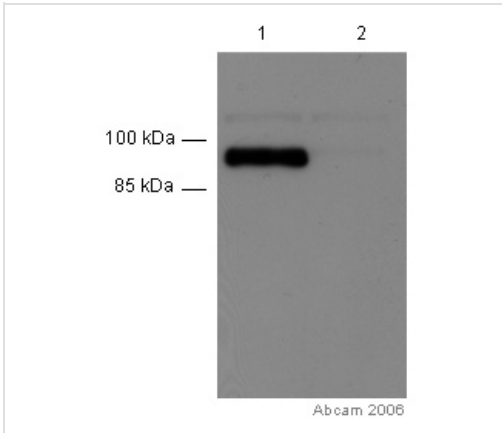
## 画像



The image shows staining of Drosophila S2 cells using ab30637 to cis-Golgi/Golgi marker, GM130. For comparison, S2 cells were stained with an antibody to the trans-Golgi marker, GCC88. Gm130 stained the cis-Golgi region and appears to be a superior Golgi marker to GCC88.

Immunocytochemistry - Anti-GM130 antibody -  
Drosophila Golgi/Cis-Golgi Marker (ab30637)

This image is courtesy of Sean Munro, MRC Laboratory of Molecular Biology



Western blot - Anti-GM130 antibody - Drosophila Golgi/Cis-Golgi Marker (ab30637)

This image is courtesy of Sean Munro, MRC Laboratory of Molecular Biology

**All lanes** : Anti-GM130 antibody - Drosophila Golgi/Cis-Golgi Marker (ab30637) at 0.1  $\mu\text{g/ml}$

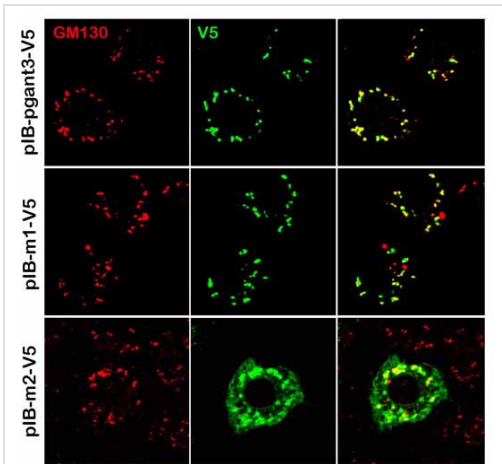
**Lane 1** : Drosophila melanogaster S2 cell extract

**Lane 2** : Drosophila melanogaster S2 cell extract + specific siRNA

**Predicted band size** : 95 kDa

**Observed band size** : 95 kDa

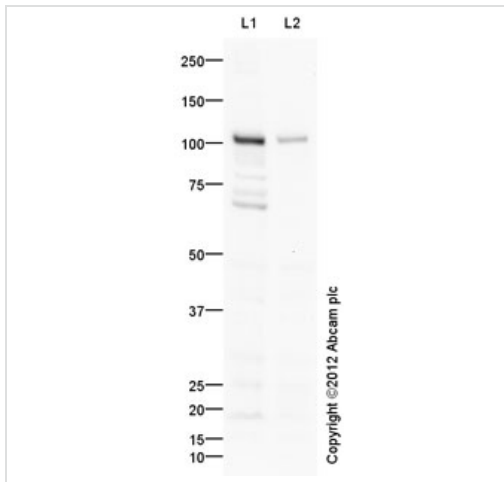
*This image is courtesy of Sean Munro, MRC Laboratory of Molecular Biology*



Immunocytochemistry/ Immunofluorescence - Anti-GM130 antibody - Drosophila Golgi/Cis-Golgi Marker (ab30637)

Image from Zhang L et al, J Biol Chem. 2010 Jun 18;285(25):19491-501. Epub 2010 Apr 6, Fig 1. DOI 10.1074/jbc.M109.098145 June 18, 2010 The Journal of Biological Chemistry, 285, 19491-19501.

ab30637 at a 1/100 dilution staining Golgi/Cis-Golgi in Drosophila S2R+ cells by Immunocytochemistry/ Immunofluorescence. Expression of recombinant wild type pgant3 (pIB-pgant3-V5), pgant3m1 (pIB-m1-V5), and pgant3m2 (pIB-m2-V5) in Drosophila S2R+ cells. Cells were then stained for V5 and the Golgi marker GM130 revealing Golgi localization of wild type pgant3 and pgant3m1.



Western blot - Anti-GM130 antibody - Drosophila  
Golgi/Cis-Golgi Marker (ab30637)

**All lanes :** Anti-GM130 antibody - Drosophila  
Golgi/Cis-Golgi Marker (ab30637) at 1 µg/ml

**Lane 1 :** Schneider L2 whole cell lysate  
(ab14893)

**Lane 2 :** Schneider L2 whole cell lysate  
(ab14893) with D. melanogaster GM130  
peptide (ab32335) at 1 µg/ml

Lysates/proteins at 10 µg per lane.

### Secondary

Goat Anti-Rabbit IgG H&L (HRP) preadsorbed  
(ab97080) at 1/5000 dilution

**Predicted band size :** 95 kDa

**Observed band size :** 105 kDa

**Additional bands at :** 70 kDa. We are  
unsure as to the identity of these extra bands.

**Please note:** All products are "FOR RESEARCH USE ONLY AND ARE NOT INTENDED FOR DIAGNOSTIC OR THERAPEUTIC USE"

### Our Abpromise to you: Quality guaranteed and expert technical support

- Replacement or refund for products not performing as stated on the datasheet
- Valid for 12 months from date of delivery
- Response to your inquiry within 24 hours
- We provide support in Chinese, English, French, German, Japanese and Spanish
- Extensive multi-media technical resources to help you
- We investigate all quality concerns to ensure our products perform to the highest standards

If the product does not perform as described on this datasheet, we will offer a refund or replacement. For full details of the Abpromise, please visit <http://www.abcam.co.jp/abpromise> or contact our technical team.

### Terms and conditions

- Guarantee only valid for products bought direct from Abcam or one of our authorized distributors