

Product datasheet

Anti-GHRHR antibody ab76263

7 References [画像数 3](#)

製品の概要

製品名	Anti-GHRHR antibody
製品の詳細	Rabbit polyclonal to GHRHR
由来種	Rabbit
アプリケーション	適用あり: WB, ELISA, ICC/IF, IHC-P, Flow Cyt
種交差性	交差種: Mouse, Rat, Human
免疫原	A synthetic peptide derived from the internal region of human GHRHR.
ポジティブ・コントロール	HUVEC cells. Extracts from LOVO cells.

製品の特性

製品の状態	Liquid
保存方法	Shipped at 4°C. Upon delivery aliquot and store at -20°C. Avoid freeze / thaw cycles.
バッファー	Preservative: 0.02% Sodium Azide Constituents: 50% Glycerol, PBS, 150mM Sodium chloride, pH 7.4
精製度	Immunogen affinity purified
ポリ/モノ	ポリクローナル
アイソタイプ	IgG

アプリケーション

Our [Abpromise guarantee](#) covers the use of **ab76263** in the following tested applications.

The application notes include recommended starting dilutions; optimal dilutions/concentrations should be determined by the end user.

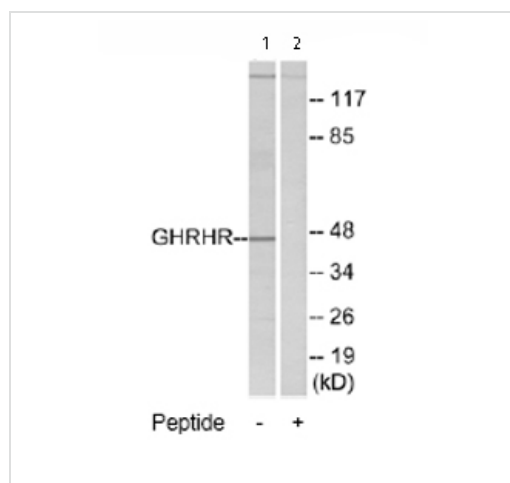
アプリケーション	Abreviews	特記事項
WB		1/500 - 1/1000. Predicted molecular weight: 47 kDa. Use BSA for blocking
ELISA		1/5000.
ICC/IF		1/500 - 1/1000.

アプリケーション	Abreviews	特記事項
IHC-P		Use at an assay dependent concentration. PubMed: 20616039
Flow Cyt		Use at an assay dependent concentration. PubMed: 25404316

ターゲット情報

機能	Receptor for GRF, coupled to G proteins which activate adenylyl cyclase. Stimulates somatotroph cell growth, growth hormone gene transcription and growth hormone secretion.
組織特異性	Pituitary gland.
関連疾患	Defects in GHRHR are a cause of growth hormone deficiency isolated type 1B (IGHD1B) [MIM:612781]; also known as dwarfism of Sindh. IGHD1B is an autosomal recessive deficiency of GH which causes short stature. IGHD1B patients have low but detectable levels of GH.
配列類似性	Belongs to the G-protein coupled receptor 2 family.
細胞内局在	Cell membrane.

画像



Western blot - GHRHR antibody (ab76263)

All lanes : Anti-GHRHR antibody (ab76263)
at 1/500 dilution

Lane 1 : Extracts from LOVO cells

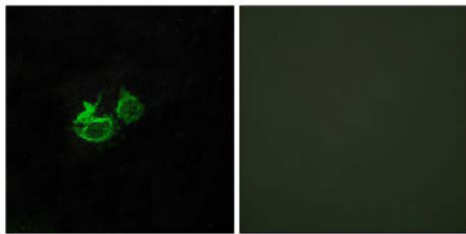
Lane 2 : Extracts from LOVO cells with
immunizing peptide at 5 µg

Lysates/proteins at 5 µg per lane.

Predicted band size: 47 kDa

Observed band size: 47 kDa

Additional bands at: >117 kDa. We are
unsure as to the identity of these extra bands.



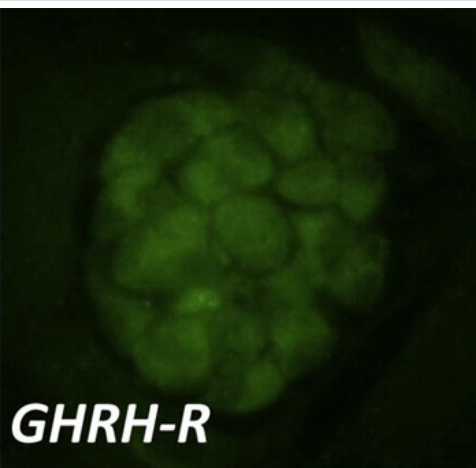
Peptide - +

Immunocytochemistry/ Immunofluorescence -
GHRHR antibody (ab76263)

Immunofluorescence analysis of HUVEC cells using ab76263 at a 1/500 dilution.

Left image un-treated.

Right image treated with immunizing peptide.



Immunocytochemistry/ Immunofluorescence - Anti-
GHRHR antibody (ab76263)

Image from Vakili H et al., Molecular and Cellular Endocrinology. Volume 345, Issues 1–2, 15 October 2011, Pages 48–57. Fig 2.; doi: 10.1016/j.mce.2011.07.010. Epub 2011 Jul 12.

Immunofluorescence analysis of mouse pituitary cells, staining GHRHR with ab76263.

Cells were fixed with 4% paraformaldehyde and blocked using 4% NGS in PBS with 0.3% Triton X-100 for 1 hour at room temperature. Cells were incubated with primary antibody (1/50) in 4% NGS for 18 hours at 4°C. Slides were washed three times for 15 min with PBS and then incubated in 4% NGS with an AlexaFluor®488-conjugated anti-rabbit secondary antibody (1/1000) for 1 hour at room temperature.

Please note: All products are "FOR RESEARCH USE ONLY AND ARE NOT INTENDED FOR DIAGNOSTIC OR THERAPEUTIC USE"

Our Abpromise to you: Quality guaranteed and expert technical support

- Replacement or refund for products not performing as stated on the datasheet
- Valid for 12 months from date of delivery
- Response to your inquiry within 24 hours
- We provide support in Chinese, English, French, German, Japanese and Spanish
- Extensive multi-media technical resources to help you
- We investigate all quality concerns to ensure our products perform to the highest standards

If the product does not perform as described on this datasheet, we will offer a refund or replacement. For full details of the Abpromise, please visit <http://www.abcam.co.jp/abpromise> or contact our technical team.

Terms and conditions

- Guarantee only valid for products bought direct from Abcam or one of our authorized distributors