

Product datasheet

Anti-GFM1 antibody ab107496

画像数 3

製品の概要

製品名	Anti-GFM1 antibody
製品の詳細	Rabbit polyclonal to GFM1
アプリケーション	適用あり: WB, IHC-P
種交差性	交差種: Mouse, Human
免疫原	A KLH conjugated synthetic peptide between C terminal amino acids 727-755 of Human GFM1 (NP_079272.4).
ポジティブ・コントロール	WB: NCH460 cell line lysates; Mouse heart tissue lysates IHC-P: Human bladder carcinoma

製品の特性

製品の状態	Liquid
保存方法	Shipped at 4°C. Store at 4°C (up to 6 months). Store at -20°C long term.
バッファー	Preservative: 0.09% Sodium Azide Constituents: PBS
精製度	Immunogen affinity purified
特記事項 (精製)	ab107496 is purified through a protein A column, followed by peptide affinity purification.
ポリモノ	ポリクローナル
アイソタイプ	IgG

アプリケーション

Our [Abpromise guarantee](#) covers the use of **ab107496** in the following tested applications.

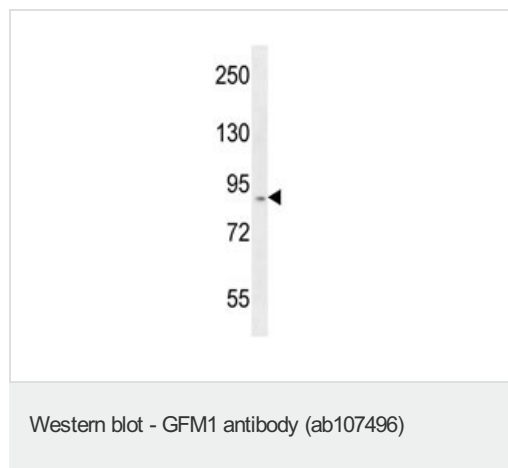
The application notes include recommended starting dilutions; optimal dilutions/concentrations should be determined by the end user.

アプリケーション	Abreviews	特記事項
WB		1/100 - 1/500. Predicted molecular weight: 83 kDa.
IHC-P		1/50 - 1/100. Perform heat mediated antigen retrieval with citrate buffer pH 6 before commencing with IHC staining protocol.

## ターゲット情報

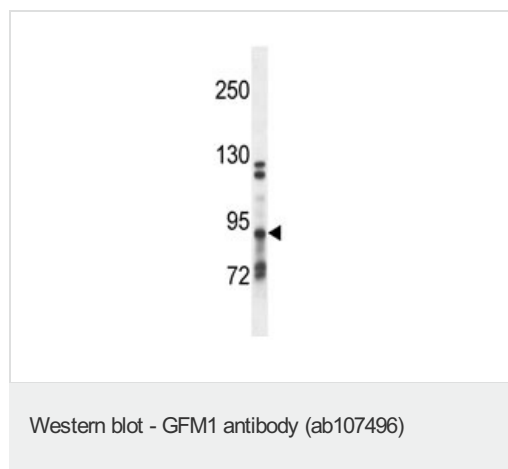
機能	Mitochondrial GTPase that catalyzes the GTP-dependent ribosomal translocation step during translation elongation. During this step, the ribosome changes from the pre-translocational (PRE) to the post-translocational (POST) state as the newly formed A-site-bound peptidyl-tRNA and P-site-bound deacylated tRNA move to the P and E sites, respectively. Catalyzes the coordinated movement of the two tRNA molecules, the mRNA and conformational changes in the ribosome. Does not mediate the disassembly of ribosomes from messenger RNA at the termination of mitochondrial protein biosynthesis.
パスウェイ	Protein biosynthesis; polypeptide chain elongation.
関連疾患	Defects in GFM1 are the cause of combined oxidative phosphorylation deficiency type 1 (COXPD1) [MIM:609060]. It leads to early fatal progressive hepatoencephalopathy.
配列類似性	Belongs to the GTP-binding elongation factor family. EF-G/EF-2 subfamily.
細胞内局在	Mitochondrion.

## 画像



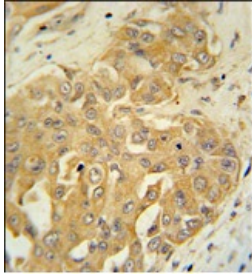
Anti-GFM1 antibody (ab107496) at 1/100 dilution + NCI-H460 cell line lysates at 35 µg

**Predicted band size : 83 kDa**



Anti-GFM1 antibody (ab107496) at 1/100 dilution + Mouse heart tissue lysates at 35 µg

**Predicted band size : 83 kDa**



Immunohistochemistry (Formalin/PFA-fixed paraffin-embedded sections) - GFM1 antibody (ab107496)

ab107496, at a 1/50 dilution, staining GFM1 in formalin fixed and paraffin embedded Human bladder carcinoma, followed by peroxidase conjugation of the secondary antibody and DAB staining.

**Please note:** All products are "FOR RESEARCH USE ONLY AND ARE NOT INTENDED FOR DIAGNOSTIC OR THERAPEUTIC USE"

### Our Abpromise to you: Quality guaranteed and expert technical support

- Replacement or refund for products not performing as stated on the datasheet
- Valid for 12 months from date of delivery
- Response to your inquiry within 24 hours
- We provide support in Chinese, English, French, German, Japanese and Spanish
- Extensive multi-media technical resources to help you
- We investigate all quality concerns to ensure our products perform to the highest standards

If the product does not perform as described on this datasheet, we will offer a refund or replacement. For full details of the Abpromise, please visit <http://www.abcam.co.jp/abpromise> or contact our technical team.

### Terms and conditions

- Guarantee only valid for products bought direct from Abcam or one of our authorized distributors