

Product datasheet

Anti-GCDH antibody ab67103

画像数 2

製品の概要

製品名	Anti-GCDH antibody
製品の詳細	Mouse polyclonal to GCDH
由来種	Mouse
アプリケーション	適用あり: WB
種交差性	交差種: Human
免疫原	Full length GCDH protein (Human)
ポジティブ・コントロール	Human liver tissue lysate and 293T cell lysate

製品の特性

製品の状態	Liquid
保存方法	Shipped at 4°C. Upon delivery aliquot and store at -20°C or -80°C. Avoid repeated freeze / thaw cycles.
バッファー	Preservative: None Constituents: 1X PBS, pH 7.2
精製度	Protein A purified
ポリ/モノ	ポリクローナル
アイソタイプ	IgG

アプリケーション

Our [Abpromise guarantee](#) covers the use of **ab67103** in the following tested applications.

The application notes include recommended starting dilutions; optimal dilutions/concentrations should be determined by the end user.

アプリケーション	Abreviews	特記事項
----------	-----------	------

WB

追加情報

WB: 1/500 - 1/1000. Detects bands of approximately 46 and 48 kDa (predicted molecular weight: 48 kDa).

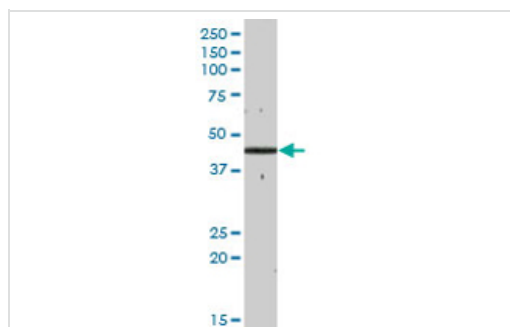
Not yet tested in other applications.

Optimal dilutions/concentrations should be determined by the end user.

ターゲット情報

機能	Catalyzes the oxidative decarboxylation of glutaryl-CoA to crotonyl-CoA and CO(2) in the degradative pathway of L-lysine, L-hydroxylysine, and L-tryptophan metabolism. It uses electron transfer flavoprotein as its electron acceptor. Isoform Short is inactive.
組織特異性	Isoform 1 and isoform 2 are expressed in fibroblasts and liver.
パスウェイ	Amino-acid metabolism; lysine degradation. Amino-acid metabolism; tryptophan metabolism.
関連疾患	Defects in GCDH are the cause of glutaric aciduria type 1 (GA1) [MIM:231670]. GA1 is an autosomal recessive metabolic disorder characterized by progressive dystonia and athetosis due to gliosis and neuronal loss in the basal ganglia.
配列類似性	Belongs to the acyl-CoA dehydrogenase family.
細胞内局在	Mitochondrion matrix.

画像



Western blot - Anti-GCDH antibody (ab67103)

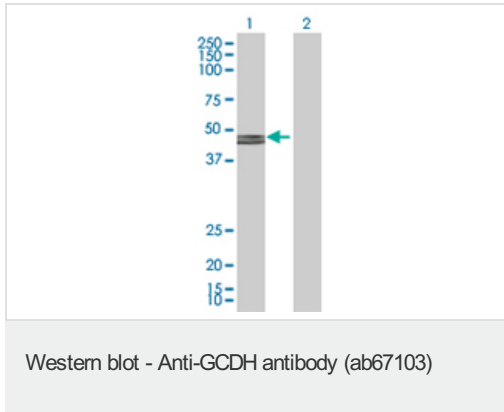
Anti-GCDH antibody (ab67103) at 1/500 dilution + human liver tissue lysate at 25 µg/ml

Secondary

Goat Anti-Mouse IgG (H&L)-HRP Conjugate at 1/2500 dilution

Predicted band size: 48 kDa

Observed band size: 48 kDa



All lanes : Anti-GCDH antibody (ab67103) at 1/500 dilution

Lane 1 : GCDH transfected 293T cell lysate

Lane 2 : Non-transfected 293T cell lysate

Lysates/proteins at 25 µg/ml per lane.

Secondary

All lanes : Goat Anti-Mouse IgG (H&L)-HRP

Conjugate at 1/2500 dilution

Predicted band size: 48 kDa

Observed band size: 48 kDa

Additional bands at: 46 kDa. We are unsure as to the identity of these extra bands.

Please note: All products are "FOR RESEARCH USE ONLY AND ARE NOT INTENDED FOR DIAGNOSTIC OR THERAPEUTIC USE"

Our Abpromise to you: Quality guaranteed and expert technical support

- Replacement or refund for products not performing as stated on the datasheet
- Valid for 12 months from date of delivery
- Response to your inquiry within 24 hours
- We provide support in Chinese, English, French, German, Japanese and Spanish
- Extensive multi-media technical resources to help you
- We investigate all quality concerns to ensure our products perform to the highest standards

If the product does not perform as described on this datasheet, we will offer a refund or replacement. For full details of the Abpromise, please visit <http://www.abcam.co.jp/abpromise> or contact our technical team.

Terms and conditions

- Guarantee only valid for products bought direct from Abcam or one of our authorized distributors