

## Product datasheet

# Anti-GBP6 antibody ab125704

画像数 3

### 製品の概要

製品名	Anti-GBP6 antibody
製品の詳細	Rabbit polyclonal to GBP6
由来種	Rabbit
特異性	ab125704 is predicted to not cross-react with other GBP family members.
アプリケーション	<b>適用あり:</b> WB, ICC/IF
種交差性	<b>交差種:</b> Mouse, Human
免疫原	A 15 amino acid peptide near the C terminus of Human GBP6 (NP_940862).
ポジティブ・コントロール	HeLa Cell lysate.

### 製品の特性

製品の状態	Liquid
保存方法	Shipped at 4°C. Upon delivery aliquot and store at -20°C. Avoid repeated freeze / thaw cycles.
バッファー	Preservative: 0.02% Sodium azide Constituent: 99% PBS
精製度	Immunogen affinity purified
特記事項(精製)	ab125704 is affinity chromatography purified via peptide column.
ポリ/モノ	ポリクローナル
アイソタイプ	IgG

### アプリケーション

Our [Abpromise guarantee](#) covers the use of **ab125704** in the following tested applications.

The application notes include recommended starting dilutions; optimal dilutions/concentrations should be determined by the end user.

アプリケーション	Abreviews	特記事項
WB		Use a concentration of 0.5 - 1 µg/ml. Predicted molecular weight: 72 kDa.
ICC/IF		Use a concentration of 20 µg/ml.

## ターゲット情報

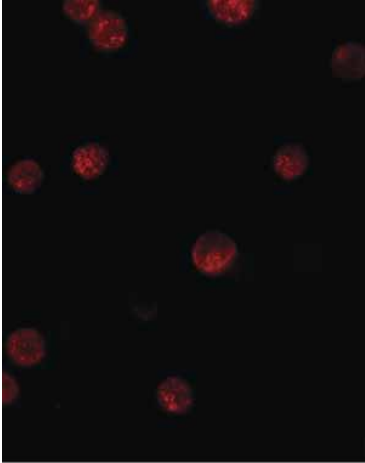
---

機能	Binds GTP, GDP and GMP.
配列類似性	Belongs to the GBP family.

---

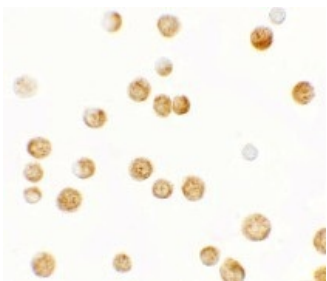
## 画像

---



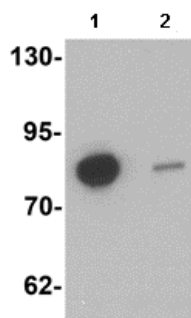
Immunofluorescence of GBP6 in HeLa cells  
with ab125704 at 5 ug/mL.

Immunocytochemistry/ Immunofluorescence - Anti-  
GBP6 antibody (ab125704)



Immunocytochemistry of GBP6 in HeLa cells  
with ab125704 at 2.5 µg/mL.

Immunocytochemistry - Anti-GBP6 antibody  
(ab125704)



- Anti-GBP6 antibody (ab125704)

**All lanes :** Anti-GBP6 antibody (ab125704) at 0.5 µg/ml

**Lane 1 :** HeLa cell lysate

**Lane 2 :** HeLa cell lysate with blocking peptide

Lysates/proteins at 15 µg per lane.

**Predicted band size:** 72 kDa

**Please note:** All products are "FOR RESEARCH USE ONLY AND ARE NOT INTENDED FOR DIAGNOSTIC OR THERAPEUTIC USE"

### Our Abpromise to you: Quality guaranteed and expert technical support

- Replacement or refund for products not performing as stated on the datasheet
- Valid for 12 months from date of delivery
- Response to your inquiry within 24 hours
- We provide support in Chinese, English, French, German, Japanese and Spanish
- Extensive multi-media technical resources to help you
- We investigate all quality concerns to ensure our products perform to the highest standards

If the product does not perform as described on this datasheet, we will offer a refund or replacement. For full details of the Abpromise, please visit <http://www.abcam.co.jp/abpromise> or contact our technical team.

### Terms and conditions

- Guarantee only valid for products bought direct from Abcam or one of our authorized distributors