




## Product datasheet

### Anti-GATA2 antibody - ChIP Grade ab22849

★★★★☆ 3 Abreviews 13 References 画像数 3

#### 製品の概要

製品名	Anti-GATA2 antibody - ChIP Grade
製品の詳細	Rabbit polyclonal to GATA2 - ChIP Grade
由来種	Rabbit
アプリケーション	適用あり: EMSA, ChIP, IHC-P, WB, IHC-Fr
種交差性	交差種: Human, Zebrafish 交差が予測される動物種: Mouse, Rat, Rabbit, Horse, Chicken, Guinea pig, Cow, Cat, Dog, Pig 
免疫原	Synthetic peptide within Human GATA2 aa 58-107 (N terminal). The exact sequence is proprietary. Sequence: PYYANPAHARARVSYSPAHARLTGGQMCRPHLLHSPGLPWLDGGKAALSA  Database link: <a href="#">P23769</a>   <a href="#">Run BLAST with</a>  <a href="#">Run BLAST with</a>
ポジティブ・コントロール	IHC-P: Human liver tissue. WB: K562 cell lysate.

#### 製品の特性

製品の状態	Liquid
保存方法	Shipped at 4°C. Store at +4°C short term (1-2 weeks). Upon delivery aliquot. Store at -20°C. Avoid freeze / thaw cycle.
バッファー	Constituents: PBS, 2% Sucrose
精製度	Protein A purified
ポリ/モノ	ポリクローナル
アイソタイプ	IgG

#### アプリケーション

Our [Abpromise guarantee](#) covers the use of **ab22849** in the following tested applications.

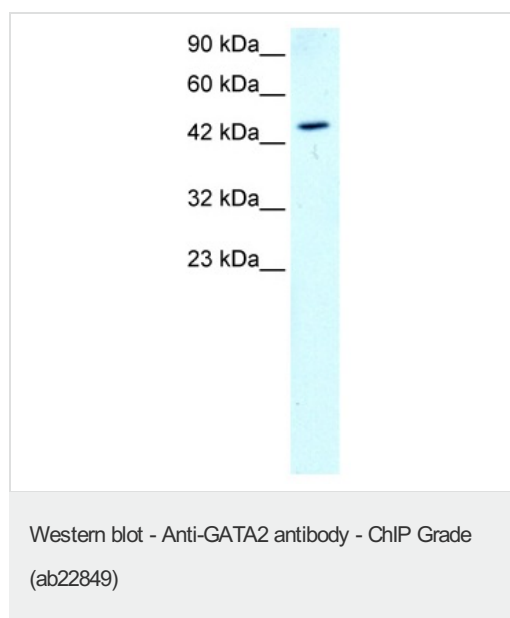
The application notes include recommended starting dilutions; optimal dilutions/concentrations should be determined by the end user.

アプリ ケーション	Abreviews	特記事項
EMSA		Use at an assay dependent concentration. PubMed: 20599521
ChIP	★★★★☆	Use at an assay dependent concentration.
IHC-P		Use at an assay dependent concentration.
WB	★★★★☆	Use a concentration of 1 - 2 µg/ml. Detects a band of approximately 50 kDa (predicted molecular weight: 50 kDa). Good results were obtained when blocked with 5% non-fat dry milk in 0.05% PBS-T.
IHC-Fr	★★★★☆	1/1000.

## ターゲット情報

機能	Transcriptional activator which regulates endothelin-1 gene expression in endothelial cells. Binds to the consensus sequence 5'-AGATAG-3'.
組織特異性	Endothelial cells.
配列類似性	Contains 2 GATA-type zinc fingers.
細胞内局在	Nucleus.

## 画像

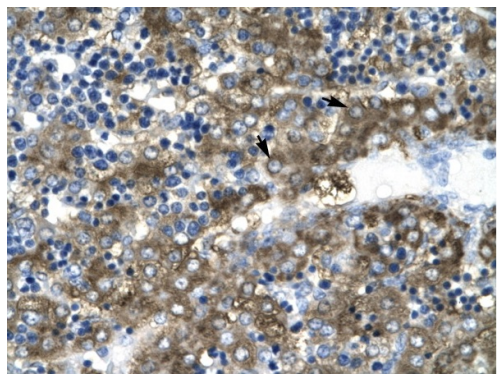


Anti-GATA2 antibody - ChIP Grade (ab22849)  
at 2 µg/ml + K562 (Human chronic myelogenous leukemia cell line from bone marrow ) cell lysate

**Predicted band size:** 50 kDa

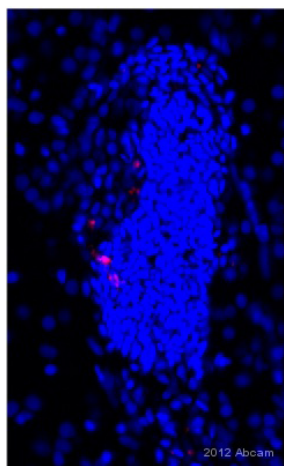
**Observed band size:** 50 kDa

Gel concentration: 12%



Immunohistochemistry (Formalin/PFA-fixed paraffin embedded sections) analysis of human liver tissue labelling GATA2 with ab22849 at a concentration of 4-8µg/ml. Arrows indicate positive labelled hepatocytes.

Immunohistochemistry (Formalin/PFA-fixed paraffin-embedded sections) - Anti-GATA2 antibody - ChIP Grade (ab22849)



ab22849 staining GATA2 in zebrafish nervous system by Immunohistochemistry (Frozen sections).

Tissue was fixed with paraformaldehyde and permeabilized with 0.3% Triton X-100. Samples were incubated with primary antibody (1/1000 in PBS + 0.3% Triton X-100) for 16 hours at 4°C. An AlexaFluor®555-conjugated goat anti-rabbit polyclonal IgG (1/500) was used as the secondary antibody.

Immunohistochemistry (Frozen sections) - Anti-GATA2 antibody - ChIP Grade (ab22849)

This image is courtesy of an anonymous Abreview

**Please note:** All products are "FOR RESEARCH USE ONLY AND ARE NOT INTENDED FOR DIAGNOSTIC OR THERAPEUTIC USE"

### Our Abpromise to you: Quality guaranteed and expert technical support

- Replacement or refund for products not performing as stated on the datasheet
- Valid for 12 months from date of delivery
- Response to your inquiry within 24 hours
- We provide support in Chinese, English, French, German, Japanese and Spanish
- Extensive multi-media technical resources to help you
- We investigate all quality concerns to ensure our products perform to the highest standards

If the product does not perform as described on this datasheet, we will offer a refund or replacement. For full details of the Abpromise, please visit <http://www.abcam.co.jp/abpromise> or contact our technical team.

## Terms and conditions

---

- Guarantee only valid for products bought direct from Abcam or one of our authorized distributors