


## Product datasheet

### Anti-Frizzled 7 antibody ab64636

★★★★☆ 4 Abreviews 7 References 画像数 6

#### 製品の概要

製品名	Anti-Frizzled 7 antibody
製品の詳細	Rabbit polyclonal to Frizzled 7
由来種	Rabbit
アプリケーション	適用あり: ICC/IF, IHC-FoFr, WB, IHC-P
種交差性	交差種: Mouse, Rat, Human 交差が予測される動物種: Chicken, Cow, Dog, Xenopus laevis, Rhesus monkey 
免疫原	Synthetic peptide conjugated to KLH derived from within residues 550 to the C-terminus of Human Frizzled 7. Immunogen の所有権に関して (Peptide available as <a href="#">ab64635</a> .)
ポジティブ・コントロール	This antibody gave a positive signal in the following lysates: Mouse Skeletal Muscle Tissue, Rat Spinal Cord Tissue, Human Brain Tissue, HEK293 Whole Cell, HeLa Whole Cell

#### 製品の特性

製品の状態	Liquid
保存方法	Shipped at 4°C. Store at +4°C short term (1-2 weeks). Upon delivery aliquot. Store at -20°C or -80°C. Avoid freeze / thaw cycle.
バッファー	Preservative: 0.02% Sodium Azide Constituents: 1% BSA, PBS, pH 7.4
精製度	Immunogen affinity purified
ポリ/モノ	ポリクローナル
アイソタイプ	IgG

#### アプリケーション

Our [Abpromise guarantee](#) covers the use of **ab64636** in the following tested applications.

The application notes include recommended starting dilutions; optimal dilutions/concentrations should be determined by the end user.

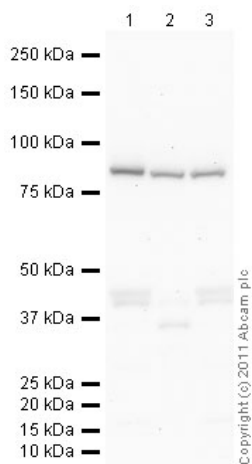
アプリケーション	Abreviews	特記事項
ICC/IF		Use a concentration of 5 µg/ml.

アプリケーション	Abreviews	特記事項
IHC-FoFr		Use at an assay dependent concentration. PubMed: 23251385
WB	★★★★☆	Use a concentration of 1 µg/ml. Detects a band of approximately 90 kDa (predicted molecular weight: 64 kDa).
IHC-P	★★★★☆	Use a concentration of 1 µg/ml. Perform heat mediated antigen retrieval before commencing with IHC staining protocol.

## ターゲット情報

機能	Receptor for Wnt proteins. Most of frizzled receptors are coupled to the beta-catenin canonical signaling pathway, which leads to the activation of disheveled proteins, inhibition of GSK-3 kinase, nuclear accumulation of beta-catenin and activation of Wnt target genes. A second signaling pathway involving PKC and calcium fluxes has been seen for some family members, but it is not yet clear if it represents a distinct pathway or if it can be integrated in the canonical pathway, as PKC seems to be required for Wnt-mediated inactivation of GSK-3 kinase. Both pathways seem to involve interactions with G-proteins. May be involved in transduction and intercellular transmission of polarity information during tissue morphogenesis and/or in differentiated tissues.
組織特異性	High expression in adult skeletal muscle and fetal kidney, followed by fetal lung, adult heart, brain, and placenta. Specifically expressed in squamous cell esophageal carcinomas.
配列類似性	Belongs to the G-protein coupled receptor Fz/Smo family. Contains 1 FZ (frizzled) domain.
ドメイン	Lys-Thr-X-X-Trp motif is involved in the activation of the Wnt/beta-catenin signaling pathway. The FZ domain is involved in binding with Wnt ligands.
細胞内局在	Membrane.

## 画像



Western blot - Anti-Frizzled 7 antibody (ab64636)

**All lanes :** Anti-Frizzled 7 antibody (ab64636)  
at 1 µg/ml

**Lane 1 :** Skeletal Muscle (Rat) Tissue Lysate

**Lane 2 :** Human skeletal muscle tissue lysate  
- total protein (ab29330)

**Lane 3 :** Skeletal Muscle (Mouse) Tissue  
Lysate

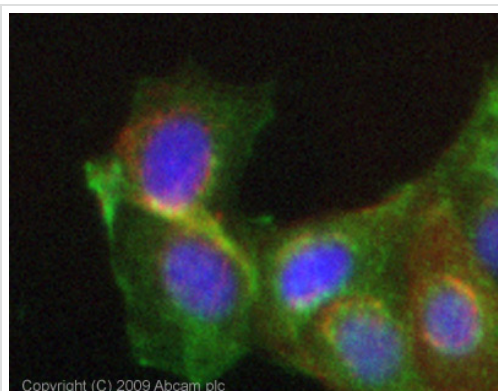
Lysates/proteins at 10 µg per lane.

### Secondary

**All lanes :** Goat polyclonal Secondary  
Antibody to Rabbit IgG - H&L (HRP), pre-  
adsorbed at 1/5000 dilution

**Predicted band size:** 64 kDa

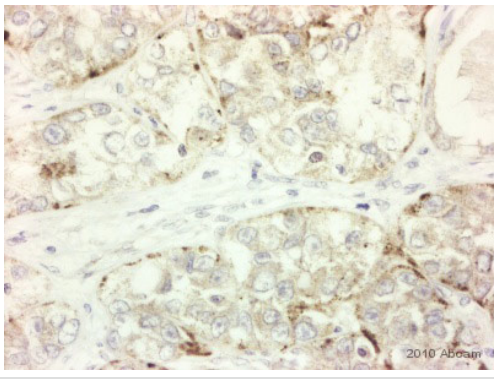
**Observed band size:** 85 kDa



Immunocytochemistry/ Immunofluorescence - Anti-Frizzled 7 antibody (ab64636)

ICC/IF image of ab64636 stained MCF7 cells.

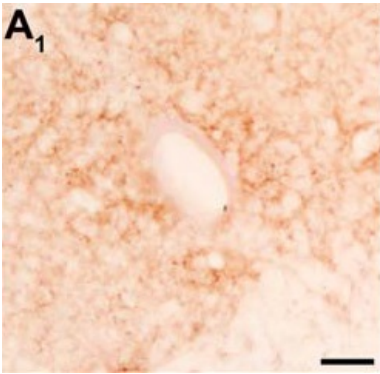
The cells were 4% PFA fixed (10 min) and then incubated in 1%BSA / 10% normal goat serum / 0.3M glycine in 0.1% PBS-Tween for 1h to permeabilise the cells and block non-specific protein-protein interactions. The cells were then incubated with the antibody (ab64636, 5µg/ml) overnight at +4°C. The secondary antibody (green) was Alexa Fluor® 488 goat anti-rabbit IgG (H+L) used at a 1/1000 dilution for 1h. Alexa Fluor® 594 WGA was used to label plasma membranes (red) at a 1/200 dilution for 1h. DAPI was used to stain the cell nuclei (blue) at a concentration of 1.43µM. This antibody also gave a positive result in 4% PFA fixed (10 min) HeLa cells at 5µg/ml.



Immunohistochemistry (Formalin/PFA-fixed paraffin-embedded sections) - Anti-Frizzled 7 antibody (ab64636)

This image is courtesy of an abreview submitted by AntibodySolutions Ltd.

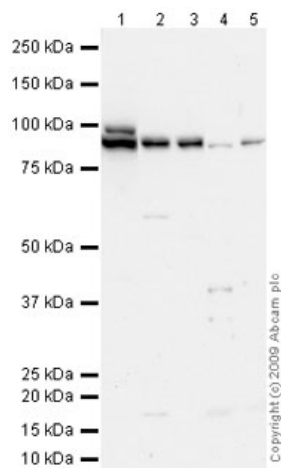
ab64636 (1/250) staining Frizzled 7 in paraffin-embedded Human kidney (papillary cancer) tissue. Tissue underwent fixation in formaldehyde, peroxidase blocking, protein blocking and heat mediated antigen retrieval. The secondary antibody was goat anti rabbit conjugated to HRP. For further experimental details please refer to abreview.



Immunohistochemistry (PFA perfusion fixed frozen sections) - Anti-Frizzled 7 antibody (ab64636)

Image from Gonzalez P et al., PLoS One. 2012;7(12):e50793. Fig 5.; doi: 10.1371/journal.pone.0050793. Epub 2012 Dec 10

Immunohistochemical image of ab64636 (dilution 1/2000) staining in rat spinal cord PFA fixed frozen tissue section, performed on an Olympus BX61 Motorized Research Microscope. The scale bar represents 50  $\mu$ m.



Western blot - Anti-Frizzled 7 antibody (ab64636)

**All lanes :** Anti-Frizzled 7 antibody (ab64636)  
at 1 µg/ml

**Lane 1 :** Skeletal Muscle (Mouse) Tissue  
Lysate

**Lane 2 :** Spinal Cord (Rat) Tissue Lysate

**Lane 3 :** Human brain tissue lysate - total  
protein ([ab29466](#))

**Lane 4 :** HEK293 (Human embryonic kidney  
cell line) Whole Cell Lysate

**Lane 5 :** HeLa (Human epithelial carcinoma  
cell line) Whole Cell Lysate

Lysates/proteins at 10 µg per lane.

### Secondary

**All lanes :** Goat polyclonal to Rabbit IgG -  
H&L - Pre-Adsorbed (HRP) at 1/3000 dilution

Developed using the ECL technique.

Performed under reducing conditions.

**Predicted band size:** 64 kDa

**Additional bands at:** 90 kDa. We are unsure  
as to the identity of these extra bands.

**Exposure time:** 10 minutes

Frizzled 7 has a predicted molecular weight of 64 kDa, however as it contains a number of potential glycosylation sites (SwissProt data) it is thought that this is the reason it is running at 90kDa. Abcam welcomes customer feedback and would appreciate any comments regarding this product and the data presented above.



Immunohistochemistry (Formalin/PFA-fixed paraffin-embedded sections) - Anti-Frizzled 7 antibody (ab64636)

IHC image of Frizzled 7 staining in human skeletal muscle formalin fixed paraffin embedded tissue section, performed on a Leica Bond™ system using the standard protocol F. The section was pre-treated using heat mediated antigen retrieval with sodium citrate buffer (pH6, epitope retrieval solution 1) for 20 mins. The section was then incubated with ab64636, 1 µg/ml, for 15 mins at room temperature and detected using an HRP conjugated compact polymer system. DAB was used as the chromogen. The section was then counterstained with haematoxylin and mounted with DPX.

**Please note:** All products are "FOR RESEARCH USE ONLY AND ARE NOT INTENDED FOR DIAGNOSTIC OR THERAPEUTIC USE"

### Our Abpromise to you: Quality guaranteed and expert technical support

- Replacement or refund for products not performing as stated on the datasheet
- Valid for 12 months from date of delivery
- Response to your inquiry within 24 hours
- We provide support in Chinese, English, French, German, Japanese and Spanish
- Extensive multi-media technical resources to help you
- We investigate all quality concerns to ensure our products perform to the highest standards

If the product does not perform as described on this datasheet, we will offer a refund or replacement. For full details of the Abpromise, please visit <http://www.abcam.co.jp/abpromise> or contact our technical team.

### Terms and conditions

- Guarantee only valid for products bought direct from Abcam or one of our authorized distributors