

## Product datasheet

# Anti-Fibronectin antibody ab299

★★★★★ 1 Abreviews 12 References 画像数 3

### 製品の概要

製品名	Anti-Fibronectin antibody
製品の詳細	Rabbit polyclonal to Fibronectin
特異性	This antibody reacts with human Fibronectin and has negligible cross-reactivity with Type I, II, III, IV, V or VI Collagens or Laminin. Minimum Cross Reactivity to collagens and non-collagen extracellular matrix proteins.
アプリケーション	<b>適用あり:</b> ELISA, IP, WB, ICC/IF, IHC-P, Sandwich ELISA
種交差性	<b>交差種:</b> Human
免疫原	Fibronectin was purified from Human plasma by binding to a denatured gelatin column followed by elution with high concentrations of arginine. The eluted material was further purified by gel filtration.
ポジティブ・コントロール	This antibody gave a positive result in IHC in the following FFPE tissue: Human breast adenocarcinoma

### 製品の特性

製品の状態	Liquid
保存方法	Shipped at 4°C. Store at +4°C short term (1-2 weeks). Add glycerol to a final volume of 50% for extra stability and aliquot. Store at -20°C or -80°C. Avoid freeze / thaw cycle.
バッファー	pH: 7.2 Preservative: 0.01% Sodium azide Constituents: 0.87% Sodium chloride, 0.42% Potassium phosphate
精製度	Immunogen affinity purified
特記事項 (精製)	Prepared by immunoaffinity chromatography using immobilized antigens followed by extensive cross-adsorption against human serum proteins and collagen and non-collagen extracellular matrix proteins to remove any unwanted specificities. This product has been sterile filtered.
ポリ/モノ	ポリクローナル
アイソタイプ	IgG

### アプリケーション

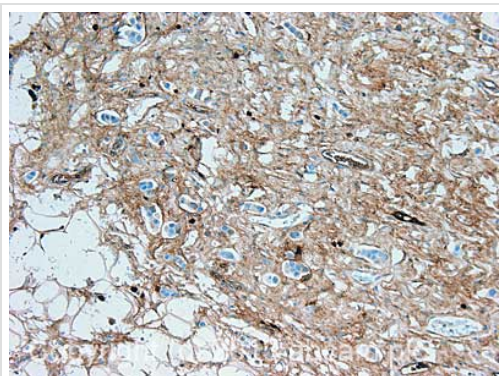
Our [Abpromise guarantee](#) covers the use of **ab299** in the following tested applications.

The application notes include recommended starting dilutions; optimal dilutions/concentrations should be determined by the end user.

アプリケーション	Abreviews	特記事項
ELISA		Use at an assay dependent concentration.
IP		1/4000 - 1/8000.
WB		1/4000 - 1/8000.
ICC/IF		Use a concentration of 1 µg/ml.
IHC-P	★★★★★	Use a concentration of 1 µg/ml. Perform heat mediated antigen retrieval with citrate buffer pH 6 before commencing with IHC staining protocol.
Sandwich ELISA		Use a concentration of 0.5 µg/ml. Can be paired for Sandwich ELISA with <a href="#">Mouse monoclonal [HFN 7.1] to Fibronectin (ab80923)</a> . For sandwich ELISA, use this antibody as Detection at 0.5 µg/ml with <a href="#">Mouse monoclonal [HFN 7.1] to Fibronectin - BSA and Azide free (ab80923)</a> as Capture.

## ターゲット情報

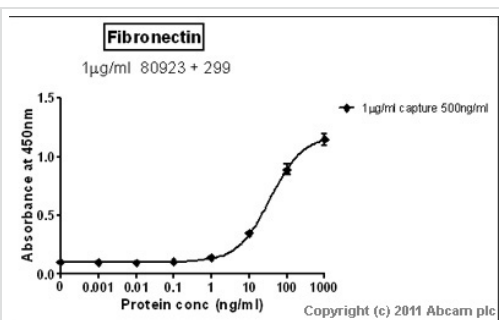
機能	<p>Fibronectins bind cell surfaces and various compounds including collagen, fibrin, heparin, DNA, and actin. Fibronectins are involved in cell adhesion, cell motility, opsonization, wound healing, and maintenance of cell shape. Involved in osteoblast compaction through the fibronectin fibrillogenesis cell-mediated matrix assembly process, essential for osteoblast mineralization. Participates in the regulation of type I collagen deposition by osteoblasts.</p> <p>Anastellin binds fibronectin and induces fibril formation. This fibronectin polymer, named superfibronectin, exhibits enhanced adhesive properties. Both anastellin and superfibronectin inhibit tumor growth, angiogenesis and metastasis. Anastellin activates p38 MAPK and inhibits lysophospholipid signaling.</p>
組織特異性	<p>Plasma FN (soluble dimeric form) is secreted by hepatocytes. Cellular FN (dimeric or cross-linked multimeric forms), made by fibroblasts, epithelial and other cell types, is deposited as fibrils in the extracellular matrix. Ugl-Y1, Ugl-Y2 and Ugl-Y3 are found in urine.</p>
関連疾患	<p>Glomerulopathy with fibronectin deposits 2</p>
配列類似性	<p>Contains 12 fibronectin type-I domains. Contains 2 fibronectin type-II domains. Contains 16 fibronectin type-III domains.</p>
発生段階	<p>Ugl-Y1, Ugl-Y2 and Ugl-Y3 are present in the urine from 0 to 17 years of age.</p>
翻訳後修飾	<p>Sulfated.</p> <p>It is not known whether both or only one of Thr-2064 and Thr-2065 are/is glycosylated.</p> <p>Forms covalent cross-links mediated by a transglutaminase, such as F13A or TGM2, between a glutamine and the epsilon-amino group of a lysine residue, forming homopolymers and heteropolymers (e.g. fibrinogen-fibronectin, collagen-fibronectin heteropolymers).</p> <p>Phosphorylated by FAM20C in the extracellular medium.</p> <p>Proteolytic processing produces the C-terminal NC1 peptide, anastellin.</p>
細胞内局在	<p>Secreted, extracellular space, extracellular matrix.</p>



Immunohistochemistry (Formalin/PFA-fixed paraffin-embedded sections) - Anti-Fibronectin antibody (ab299)

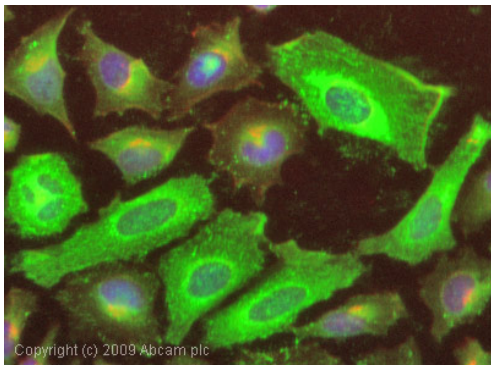
IHC image of Fibronectin antibody staining in Human breast adenocarcinoma formalin fixed paraffin embedded tissue section, performed on a Leica Bond™ system using the standard protocol F. The section was pre-treated using heat mediated antigen retrieval with sodium citrate buffer (pH6, epitope retrieval solution 1) for 20 mins. The section was then incubated with ab299, 1µg/ml, for 15 mins at room temperature and detected using an HRP conjugated compact polymer system. DAB was used as the chromogen. The section was then counterstained with haematoxylin and mounted with DPX.

For other IHC staining systems (automated and non-automated) customers should optimize variable parameters such as antigen retrieval conditions, primary antibody concentration and antibody incubation times.



Sandwich ELISA - Fibronectin antibody (ab299)

Standard Curve for Fibronectin (Analyte: [Fibronectin protein \(Human\) \(ab81743\)](#)); dilution range 1pg/ml to 1µg/ml using Capture Antibody [Mouse monoclonal \[HFN 7.1\] to Fibronectin - BSA and Azide free \(ab80923\)](#) at 1µg/ml and Detector Antibody [Rabbit polyclonal to Fibronectin \(ab299\)](#) at 0.5µg/ml.



Immunocytochemistry/ Immunofluorescence -  
Fibronectin antibody (ab299)

ICC/IF image of ab299 stained HeLa cells. The cells were 4% formaldehyde fixed (10 min) and then incubated in 1%BSA / 10% normal goat serum / 0.3M glycine in 0.1% PBS-Tween for 1h to permeabilise the cells and block non-specific protein-protein interactions. The cells were then incubated with the antibody (ab299, 1µg/ml) overnight at +4°C. The secondary antibody (green) was Alexa Fluor® 488 goat anti-rabbit IgG (H+L) used at a 1/1000 dilution for 1h. Alexa Fluor® 594 WGA was used to label plasma membranes (red) at a 1/200 dilution for 1h. DAPI was used to stain the cell nuclei (blue) at a concentration of 1.43µM.

**Please note:** All products are "FOR RESEARCH USE ONLY AND ARE NOT INTENDED FOR DIAGNOSTIC OR THERAPEUTIC USE"

### Our Abpromise to you: Quality guaranteed and expert technical support

- Replacement or refund for products not performing as stated on the datasheet
- Valid for 12 months from date of delivery
- Response to your inquiry within 24 hours
- We provide support in Chinese, English, French, German, Japanese and Spanish
- Extensive multi-media technical resources to help you
- We investigate all quality concerns to ensure our products perform to the highest standards

If the product does not perform as described on this datasheet, we will offer a refund or replacement. For full details of the Abpromise, please visit <http://www.abcam.co.jp/abpromise> or contact our technical team.

### Terms and conditions

- Guarantee only valid for products bought direct from Abcam or one of our authorized distributors