

Product datasheet

Anti-Fibrillin 1 antibody [3H6] ab124334

1 Abreviews 1 References 画像数 2

製品の概要

製品名	Anti-Fibrillin 1 antibody [3H6]
製品の詳細	Mouse monoclonal [3H6] to Fibrillin 1
アプリケーション	適用あり: WB, IHC-P, Sandwich ELISA
種交差性	交差種: Human
免疫原	Recombinant fragment, corresponding to amino acids 2772-2872 of Human Fibrillin 1 with a proprietary tag (NP_000129).
ポジティブ・コントロール	Human placenta tissue; Recombinant tagged Fibrillin 1

製品の特性

製品の状態	Liquid
保存方法	Shipped at 4°C. Upon delivery aliquot and store at -20°C or -80°C. Avoid repeated freeze / thaw cycles.
バッファー	pH: 7.4 Constituent: 99% PBS
精製度	Protein A purified
ポリ/モノ	モノクローナル
クローン名	3H6
アイソタイプ	IgG2a
軽鎖の種類	kappa

アプリケーション

Our [Abpromise guarantee](#) covers the use of **ab124334** in the following tested applications.

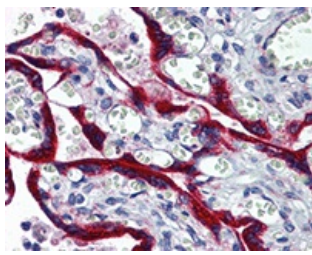
The application notes include recommended starting dilutions; optimal dilutions/concentrations should be determined by the end user.

アプリケーション	Abreviews	特記事項
WB		1/500 - 1/1000. Predicted molecular weight: 312 kDa.
IHC-P		Use a concentration of 5 µg/ml.
Sandwich ELISA		Use at an assay dependent concentration.

ターゲット情報

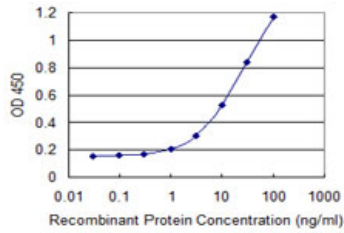
機能	<p>Fibrillins are structural components of 10-12 nm extracellular calcium-binding microfibrils, which occur either in association with elastin or in elastin-free bundles. Fibrillin-1-containing microfibrils provide long-term force bearing structural support. Regulates osteoblast maturation by controlling TGF-beta bioavailability and calibrating TGF-beta and BMP levels, respectively.</p>
関連疾患	<p>Defects in FBN1 are a cause of Marfan syndrome (MFS) [MIM:154700]. MFS is an autosomal dominant disorder that affects the skeletal, ocular, and cardiovascular systems. A wide variety of skeletal abnormalities occurs with MFS, including scoliosis, chest wall deformity, tall stature, abnormal joint mobility. Ectopia lentis occurs in up to about 80% of MFS patients and is almost always bilateral. The leading cause of premature death in MFS patients is progressive dilation of the aortic root and ascending aorta, causing aortic incompetence and dissection. Note=The majority of the more than 600 mutations in FBN1 currently known are point mutations, the rest are frameshifts and splice site mutations. Marfan syndrome has been suggested in at least 2 historical figures, Abraham Lincoln and Paganini.</p> <p>Defects in FBN1 are a cause of isolated ectopia lentis (EL) [MIM:129600]. The symptoms of this autosomal dominant fibrillinopathy overlap with those of Marfan syndrome, with the exclusion of the skeletal and cardiovascular manifestations.</p> <p>Defects in FBN1 are the cause of Weill-Marchesani syndrome autosomal dominant (ADWMS) [MIM:608328]. A rare connective tissue disorder characterized by short stature, brachydactyly, joint stiffness, and eye abnormalities including microspherophakia, ectopia lentis, severe myopia and glaucoma.</p> <p>Defects in FBN1 are a cause of Shprintzen-Goldberg craniosynostosis syndrome (SGS) [MIM:182212]. SGS is a very rare syndrome characterized by a marfanoid habitus, craniosynostosis, characteristic dysmorphic facial features, skeletal and cardiovascular abnormalities, mental retardation, developmental delay and learning disabilities.</p> <p>Defects in FBN1 are a cause of overlap connective tissue disease (OCTD) [MIM:604308]. A heritable disorder of connective tissue characterized by involvement of the mitral valve, aorta, skeleton, and skin. MASS syndrome is closely resembling both the Marfan syndrome and the Barlow syndrome. However, no dislocation of the lenses or aneurysmal changes occur in the aorta, and the mitral valve prolapse is by no means invariable.</p> <p>Defects in FBN1 are a cause of stiff skin syndrome (SSKS) [MIM:184900]. It is a syndrome characterized by hard, thick skin, usually over the entire body, which limits joint mobility and causes flexion contractures. Other occasional findings include lipodystrophy and muscle weakness.</p>
配列類似性	<p>Belongs to the fibrillin family.</p> <p>Contains 47 EGF-like domains.</p> <p>Contains 9 TB (TGF-beta binding) domains.</p>
翻訳後修飾	<p>Forms intermolecular disulfide bonds either with other fibrillin-1 molecules or with other components of the microfibrils.</p>
細胞内局在	<p>Secreted > extracellular space > extracellular matrix.</p>

Anti-Fibrillin 1 antibody [3H6] 画像



ab124334, at 5 µg/ml staining Fibrillin 1 in formalin-fixed, paraffin-embedded Human Placenta tissue by Immunohistochemistry.

Immunohistochemistry (Formalin/PFA-fixed paraffin-embedded sections) - Anti-Fibrillin 1 antibody [3H6] (ab124334)



Detection limit for recombinant tagged Fibrillin 1 is 0.3 ng/ml as a capture antibody.

Sandwich ELISA - Anti-Fibrillin 1 antibody [3H6] (ab124334)

Please note: All products are "FOR RESEARCH USE ONLY AND ARE NOT INTENDED FOR DIAGNOSTIC OR THERAPEUTIC USE"

Our Abpromise to you: Quality guaranteed and expert technical support

- Replacement or refund for products not performing as stated on the datasheet
- Valid for 12 months from date of delivery
- Response to your inquiry within 24 hours
- We provide support in Chinese, English, French, German, Japanese and Spanish
- Extensive multi-media technical resources to help you
- We investigate all quality concerns to ensure our products perform to the highest standards

If the product does not perform as described on this datasheet, we will offer a refund or replacement. For full details of the Abpromise, please visit <http://www.abcam.co.jp/abpromise> or contact our technical team.

Terms and conditions

- Guarantee only valid for products bought direct from Abcam or one of our authorized distributors