


Product datasheet

Anti-FbxL7 antibody ab59149

画像数 2

製品の概要

製品名	Anti-FbxL7 antibody
製品の詳細	Rabbit polyclonal to FbxL7
アプリケーション	適用あり: WB, IHC-P, ELISA
種交差性	交差種: Human 交差が予測される動物種: Mouse, Rat, Rabbit, Horse, Guinea pig, Cow, Cat 
免疫原	Synthetic peptide: KEQASIDRLP DHSMVQIFS LPTNQLCRCA RVCRRWYNLA WDPRLWRTIR, corresponding to amino acids 109-158 of Human FbxL7 Run BLAST with ExPASy Run BLAST with NCBI
ポジティブ・コントロール	HepG2 cell lysate and human kidney tissue.

製品の特性

製品の状態	Liquid
保存方法	Shipped at 4°C. Upon delivery aliquot and store at -20°C or -80°C. Avoid repeated freeze / thaw cycles.
バッファー	Preservative: None Constituents: 2% Sucrose, PBS
精製度	Protein A purified
ポリ/モノ	ポリクローナル
アイソタイプ	IgG

アプリケーション

Our [Abpromise guarantee](#) covers the use of **ab59149** in the following tested applications.

The application notes include recommended starting dilutions; optimal dilutions/concentrations should be determined by the end user.

アプリケーション	Abreviews	特記事項
WB		Use a concentration of 1.25 µg/ml. Detects a band of approximately 50 kDa (predicted molecular weight: 55 kDa). Good results were obtained when blocked with 5% non-fat dry milk in 0.05% PBS-T.
IHC-P		Use a concentration of 4 - 8 µg/ml.

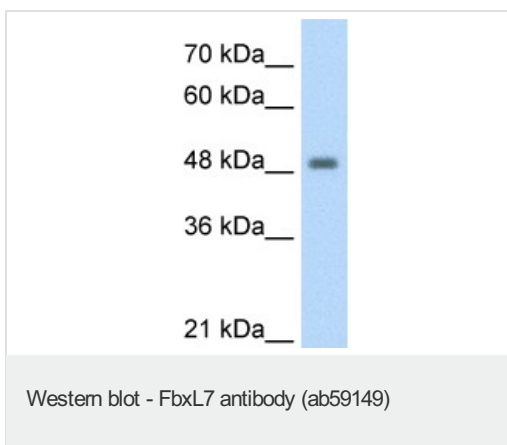
ELISA Use at an assay dependent concentration.
Titre using peptide based assay:1/312500.

ターゲット情報

機能 Probably recognizes and binds to some phosphorylated proteins and promotes their ubiquitination and degradation.

配列類似性 Contains 1 F-box domain.
Contains 11 LRR (leucine-rich) repeats.

Anti-FbxL7 antibody 画像



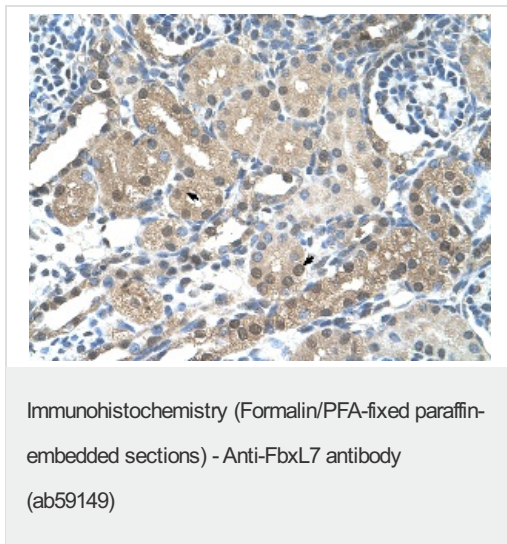
Anti-FbxL7 antibody (ab59149) at 1.25 µg/ml
+ HepG2 cell lysate at 10 µg

Secondary

HRP conjugated anti-Rabbit IgG at 1/50000
dilution

Predicted band size : 55 kDa

Observed band size : 50 kDa



Immunohistochemistry (Formalin/PFA-fixed paraffin-embedded sections) analysis of human kidney tissue labelling FbxL7 with ab59149 at 4-8µg/ml. Arrows indicate positively labelled epithelial cells of the renal tubule. Magnification: 400X.

Please note: All products are "FOR RESEARCH USE ONLY AND ARE NOT INTENDED FOR DIAGNOSTIC OR THERAPEUTIC USE"

Our Abpromise to you: Quality guaranteed and expert technical support

- Replacement or refund for products not performing as stated on the datasheet
- Valid for 12 months from date of delivery
- Response to your inquiry within 24 hours
- We provide support in Chinese, English, French, German, Japanese and Spanish

- Extensive multi-media technical resources to help you
- We investigate all quality concerns to ensure our products perform to the highest standards

If the product does not perform as described on this datasheet, we will offer a refund or replacement. For full details of the Abpromise, please visit <http://www.abcam.co.jp/abpromise> or contact our technical team.

Terms and conditions

- Guarantee only valid for products bought direct from Abcam or one of our authorized distributors