


## Product datasheet

### Anti-FRA1 antibody ab50426

画像数 1

#### 製品の概要

製品名	Anti-FRA1 antibody
製品の詳細	Goat polyclonal to FRA1
由来種	Goat
特異性	No cross-reactivity expected with V-FOS.
アプリケーション	適用あり: WB, ELISA
種交差性	交差種: Human 交差が予測される動物種: Mouse, Rat 
免疫原	Synthetic peptide: C-QREIEELQKQKER , corresponding to internal sequence amino acids 148-160 of Human FRA1 <a href="#">Run BLAST with</a> <a href="#">Run BLAST with</a>
ポジティブ・コントロール	Human Bone Marrow lysate.

#### 製品の特性

製品の状態	Liquid
保存方法	Shipped at 4°C. Upon delivery aliquot and store at -20°C or -80°C. Avoid repeated freeze / thaw cycles.
バッファー	Preservative: 0.02% Sodium Azide Constituents: 0.5% BSA, Tris saline, pH 7.3
精製度	Immunogen affinity purified
ポリモノ	ポリクローナル
アイソタイプ	IgG

#### アプリケーション

Our [Abpromise guarantee](#) covers the use of **ab50426** in the following tested applications.

The application notes include recommended starting dilutions; optimal dilutions/concentrations should be determined by the end user.

**アプリケーション****Abreviews****特記事項**

WB

ELISA

**追加情報**

Peptide ELISA: Use at an assay dependent dilution. Antibody detection limit dilution 1:1,000.  
WB: Use at a concentration of 0.1 - 0.3 µg/ml. Detects a band of approximately 28 kDa (predicted molecular weight: 29 kDa).

Not yet tested in other applications.

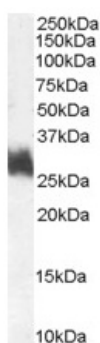
Optimal dilutions/concentrations should be determined by the end user.

**ターゲット情報****配列類似性**

Belongs to the bZIP family. Fos subfamily.  
Contains 1 bZIP domain.

**細胞内局在**

Nucleus.

**画像**

Western blot - Anti-FRA1 antibody (ab50426)

Anti-FRA1 antibody (ab50426) at 1 µg/ml +  
Human Bone Marrow lysate (35µg protein in  
RIPA buffer).

**Predicted band size:** 29 kDa

**Observed band size:** 28 kDa

Primary incubation was 1 hour. Detected by  
chemiluminescence.

**Please note:** All products are "FOR RESEARCH USE ONLY AND ARE NOT INTENDED FOR DIAGNOSTIC OR THERAPEUTIC USE"

**Our Abpromise to you: Quality guaranteed and expert technical support**

- Replacement or refund for products not performing as stated on the datasheet
- Valid for 12 months from date of delivery
- Response to your inquiry within 24 hours
- We provide support in Chinese, English, French, German, Japanese and Spanish
- Extensive multi-media technical resources to help you
- We investigate all quality concerns to ensure our products perform to the highest standards

If the product does not perform as described on this datasheet, we will offer a refund or replacement. For full details of the Abpromise, please visit <http://www.abcam.co.jp/abpromise> or contact our technical team.

## Terms and conditions

---

- Guarantee only valid for products bought direct from Abcam or one of our authorized distributors