

Product datasheet

Anti-FPRL1 antibody ab63022

1 References [画像数 3](#)

製品の概要

製品名	Anti-FPRL1 antibody
製品の詳細	Rabbit polyclonal to FPRL1
由来種	Rabbit
特異性	This antibody recognizes human FPRL-1.
アプリケーション	適用あり: WB, Flow Cyt, ICC/IF
種交差性	交差種: Human
免疫原	Synthetic peptide corresponding to residues of 2nd extracellular loop of human FPRL1, KLH conjugated.
ポジティブ・コントロール	HL60 cells and extracts from HL60 cells

製品の特性

製品の状態	Liquid
保存方法	Shipped at 4°C. Upon delivery aliquot and store at -20°C. Avoid freeze / thaw cycles.
精製度	Protein G purified
ポリ/モノ	ポリクローナル
アイソタイプ	IgG

アプリケーション

Our [Abpromise guarantee](#) covers the use of **ab63022** in the following tested applications.

The application notes include recommended starting dilutions; optimal dilutions/concentrations should be determined by the end user.

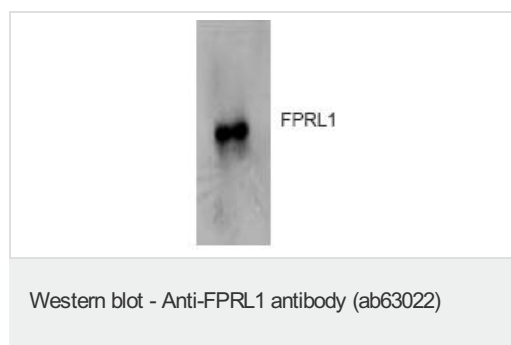
アプリケーション	Abreviews	特記事項
WB		1/5000. Detects a band of approximately 38 kDa (predicted molecular weight: 39 kDa).
Flow Cyt		1/100. ab171870 - Rabbit polyclonal IgG, is suitable for use as an isotype control with this antibody.

アプリケーション	Abreviews	特記事項
ICC/IF		1/500.

ターゲット情報

機能	Low affinity receptor for N-formyl-methionyl peptides, which are powerful neutrophils chemotactic factors. Binding of FMLP to the receptor causes activation of neutrophils. This response is mediated via a G-protein that activates a phosphatidylinositol-calcium second messenger system. The activation of LXA4R could result in an anti-inflammatory outcome counteracting the actions of proinflammatory signals such as LTB4 (leukotriene B4).
組織特異性	Expressed abundantly in the lung and neutrophils. Also found in the spleen and testis.
配列類似性	Belongs to the G-protein coupled receptor 1 family.
細胞内局在	Cell membrane.

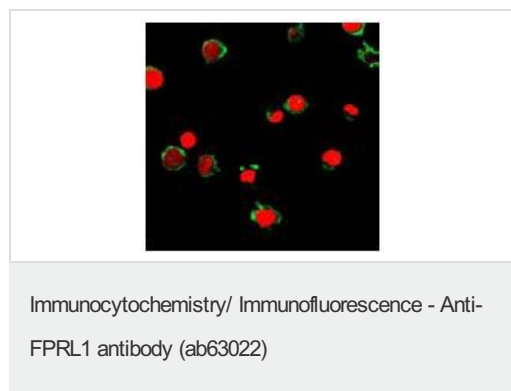
画像



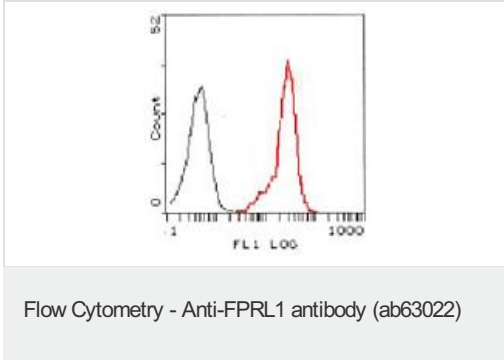
Anti-FPRL1 antibody (ab63022) at 1/5000 dilution + Extracts from HL60 cells.

Predicted band size: 39 kDa

Observed band size: 38 kDa



Immunofluorescent analysis of HL60 cells using ab63022 (green) at 1:500. Nucleus have been labeled with PI (red).



Flow cytometric analysis of HL60 cells using ab63022 at 1:100 (red) compared to a non-specific negative control antibody (black).

Please note: All products are "FOR RESEARCH USE ONLY AND ARE NOT INTENDED FOR DIAGNOSTIC OR THERAPEUTIC USE"

Our Abpromise to you: Quality guaranteed and expert technical support

- Replacement or refund for products not performing as stated on the datasheet
- Valid for 12 months from date of delivery
- Response to your inquiry within 24 hours
- We provide support in Chinese, English, French, German, Japanese and Spanish
- Extensive multi-media technical resources to help you
- We investigate all quality concerns to ensure our products perform to the highest standards

If the product does not perform as described on this datasheet, we will offer a refund or replacement. For full details of the Abpromise, please visit <http://www.abcam.co.jp/abpromise> or contact our technical team.

Terms and conditions

- Guarantee only valid for products bought direct from Abcam or one of our authorized distributors