


Product datasheet

Anti-FOXC2 antibody - ChIP Grade ab5060

18 References [画像数 3](#)

製品の概要

製品名	Anti-FOXC2 antibody - ChIP Grade
製品の詳細	Goat polyclonal to FOXC2 - ChIP Grade
由来種	Goat
特異性	The antibody labels FOXC2 in mouse lymphatic primordia, jugular lymph sacs, lymphatic collectors and capillaries. In western blotting the antibody has been tested on FOXC2 overexpressing cell lines but not on endogenous protein.
アプリケーション	適用あり: WB, ChIP, IHC-P 適用なし: IHC-Fr
種交差性	交差種: Mouse, Human 交差が予測される動物種: Rat, Cow, Dog 
免疫原	Synthetic peptide: RHAAPYSYDCTKY , corresponding to C terminal amino acids 489-501 of Human FOXC2. Run BLAST with Run BLAST with
ポジティブ・コントロール	IHC: mouse lymphatic primordia, jugular lymph sacs, lymphatic collectors and capillaries WB: FOXC2 overexpressing cell lines

製品の特性

製品の状態	Liquid
保存方法	Shipped at 4°C. Store at +4°C short term (1-2 weeks). Upon delivery aliquot. Store at -20°C or -80°C. Avoid freeze / thaw cycle.
バッファー	Preservative: 0.02% Sodium azide Constituents: Tris buffered saline, 0.5% BSA
精製度	Immunogen affinity purified
特記事項 (精製)	Purified from goat serum by ammonium sulphate precipitation followed by antigen affinity chromatography using the immunizing peptide.
ポリクローナル	ポリクローナル
アイソタイプ	IgG

アプリケーション

Our [Abpromise guarantee](#) covers the use of **ab5060** in the following tested applications.

The application notes include recommended starting dilutions; optimal dilutions/concentrations should be determined by the end user.

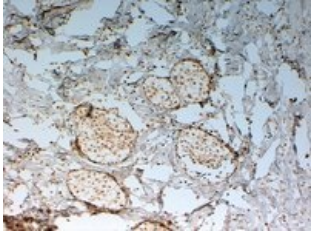
アプリケーション	Abreviews	特記事項
WB		Use a concentration of 0.1 - 0.2 µg/ml. Detects a band of approximately 52 kDa (predicted molecular weight: 56 kDa). Can be blocked with Human FOXC2 peptide (ab23061) .
ChIP		Use at an assay dependent concentration. PubMed: 18579532
IHC-P		Use a concentration of 2 - 4 µg/ml. Perform heat mediated antigen retrieval before commencing with IHC staining protocol.

追加情報 Is unsuitable for IHC-Fr.

ターゲット情報

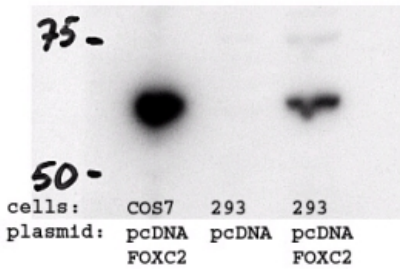
機能	Transcriptional activator. Might be involved in the formation of special mesenchymal tissues.
関連疾患	<p>Defects in FOXC2 are the cause of lymphedema hereditary type 2 (LMPH2) [MIM:153200]; also known as Meige lymphedema. Hereditary lymphedema is a chronic disabling condition which results in swelling of the extremities due to altered lymphatic flow. Patients with lymphedema suffer from recurrent local infections, and physical impairment.</p> <p>Defects in FOXC2 are a cause of lymphedema-yellow nails (LYYN) [MIM:153300]. LYYN is characterized by yellow, dystrophic, thick and slowly growing nails, associated with lymphedema and respiratory involvement. Lymphedema occurs more often in the lower limbs. It can appear at birth or later in life. Onset generally follows the onset of ungual abnormalities.</p> <p>Defects in FOXC2 are a cause of lymphedema-distichiasis (LYD) [MIM:153400]. LYD is characterized by primary limb lymphedema usually starting at puberty (but in some cases later or at birth) and associated with distichiasis (double rows of eyelashes, with extra eyelashes growing from the Meibomian gland orifices).</p>
配列類似性	Contains 1 fork-head DNA-binding domain.
細胞内局在	Nucleus.

画像



Immunohistochemistry (Formalin/PFA-fixed paraffin-embedded sections) - Anti-FOXC2 antibody - ChIP Grade (ab5060)

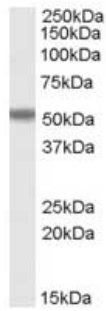
ab5060 (2µg/ml) staining of paraffin embedded Human Breast cancer tissue shows nuclear staining with some weak cytoplasm staining. Steamed antigen retrieval with citrate buffer pH 6, HRP-staining.



Western blot - Anti-FOXC2 antibody - ChIP Grade (ab5060)

FoxC2 is highly expressed in COS7 and 293 cells transiently transfected with pcDNA-FOXC2. This figure shows a western blot incubated with the ab5060 antibody after running lysates from COS7 and 293 cells transiently expressing FoxC2 (lane 1 and 3 respectively). Lane 2 shows a negative control of 293 cells transfected with an empty vector. Review by Michal Bell submitted 19 August 2004

FoxC2 is highly expressed in COS7 and 293 cells transiently transfected with pcDNA-FOXC2. This figure shows a western blot incubated with the ab5060 antibody after running lysates from COS7 and 293 cells transiently expressing FoxC2 (lane 1 and 3 respectively). Lane 2 shows a negative control of 293 cells transfected with an empty vector. Review by Michal Bell submitted 19 August 2004



Western blot - Anti-FOXC2 antibody - ChIP Grade (ab5060)

Anti-FOXC2 antibody - ChIP Grade (ab5060)
at 1 µg/ml + Human breast cancer lysates at
30 µg

Developed using the ECL technique.

Predicted band size: 56 kDa

Observed band size: 52 kDa

The primary antibody incubated for 1 hour.

Please note: All products are "FOR RESEARCH USE ONLY AND ARE NOT INTENDED FOR DIAGNOSTIC OR THERAPEUTIC USE"

Our Abpromise to you: Quality guaranteed and expert technical support

- Replacement or refund for products not performing as stated on the datasheet
- Valid for 12 months from date of delivery
- Response to your inquiry within 24 hours
- We provide support in Chinese, English, French, German, Japanese and Spanish
- Extensive multi-media technical resources to help you
- We investigate all quality concerns to ensure our products perform to the highest standards

If the product does not perform as described on this datasheet, we will offer a refund or replacement. For full details of the Abpromise, please visit <http://www.abcam.co.jp/abpromise> or contact our technical team.

Terms and conditions

- Guarantee only valid for products bought direct from Abcam or one of our authorized distributors