


Product datasheet

Anti-FIGNL1 antibody ab70841

画像数 2

製品の概要

製品名	Anti-FIGNL1 antibody
製品の詳細	Rabbit polyclonal to FIGNL1
由来種	Rabbit
アプリケーション	適用あり: WB, IP
種交差性	交差種: Mouse, Human 交差が予測される動物種: Rabbit, Chimpanzee, Rhesus monkey, Gorilla, Orangutan, Elephant 
免疫原	Synthetic peptide, corresponding to a region between amino acids 1-50 of Human FIGNL1 (NP_071399.2)
ポジティブ・コントロール	Whole cell lysate from HeLa, 293T and mouse NIH3T3 cells

製品の特性

製品の状態	Liquid
保存方法	Shipped at 4°C. Upon delivery aliquot and store at -20°C. Avoid freeze / thaw cycles.
バッファー	Preservative: 0.09% Sodium Azide Constituents: 8mM PBS, 60mM Citrate, 150mM Tris, pH 7 to 8
精製度	Immunogen affinity purified
ポリ/モノ	ポリクローナル
アイソタイプ	IgG

アプリケーション

Our [Abpromise guarantee](#) covers the use of **ab70841** in the following tested applications.

The application notes include recommended starting dilutions; optimal dilutions/concentrations should be determined by the end user.

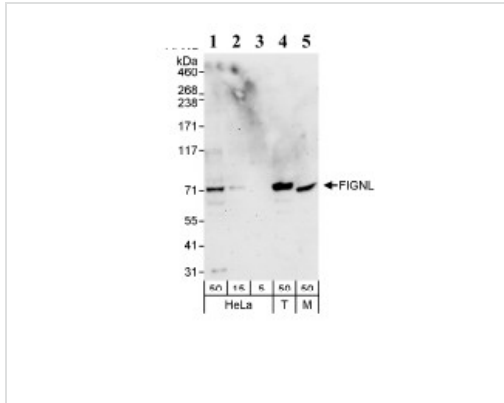
アプリケーション	Abreviews	特記事項
WB		1/1000 - 1/5000. Detects a band of approximately 71 kDa (predicted molecular weight: 74 kDa).
IP		Use at 2-5 µg/mg of lysate.

ターゲット情報

関連性

May regulate osteoblast proliferation and differentiation.

画像



Western blot - FIGNL1 antibody (ab70841)

All lanes : Anti-FIGNL1 antibody (ab70841)
at 1 µg/ml

Lane 1 : Whole cell lysate from HeLa cells at
50 µg

Lane 2 : Whole cell lysate from HeLa cells at
15 µg

Lane 3 : Whole cell lysate from HeLa cells at
5 µg

Lane 4 : Whole cell lysate from 293T cells at
50 µg

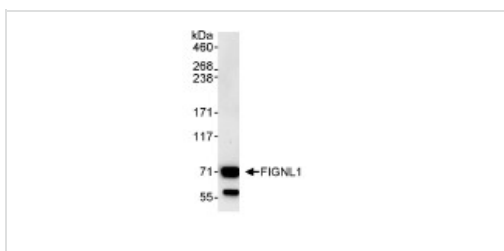
Lane 5 : Whole cell lysate from NIH3T3 cells
at 50 µg

Developed using the ECL technique.

Predicted band size: 74 kDa

Observed band size: 71 kDa

Exposure time: 3 minutes



Immunoprecipitation - FIGNL1 antibody (ab70841)

Detection of Human FIGNL1 by Immunoprecipitation in Whole cell lysate from HeLa (1 mg for IP, 20% of IP loaded), using ab70841 for IP at 3 µg/mg lysate. Subsequent WB detection was performed using 1 µg/mg ab70841 and chemiluminescence with an exposure time of 30 seconds.

Please note: All products are "FOR RESEARCH USE ONLY AND ARE NOT INTENDED FOR DIAGNOSTIC OR THERAPEUTIC USE"

Our Abpromise to you: Quality guaranteed and expert technical support

- Replacement or refund for products not performing as stated on the datasheet

- Valid for 12 months from date of delivery
- Response to your inquiry within 24 hours

- We provide support in Chinese, English, French, German, Japanese and Spanish
- Extensive multi-media technical resources to help you
- We investigate all quality concerns to ensure our products perform to the highest standards

If the product does not perform as described on this datasheet, we will offer a refund or replacement. For full details of the Abpromise, please visit <http://www.abcam.co.jp/abpromise> or contact our technical team.

Terms and conditions

- Guarantee only valid for products bought direct from Abcam or one of our authorized distributors