

## Product datasheet

# Anti-FGF22 antibody ab74860

画像数 3

### 製品の概要

製品名	Anti-FGF22 antibody
製品の詳細	Rabbit polyclonal to FGF22
由来種	Rabbit
アプリケーション	適用あり: ELISA, WB, IHC-P, ICC/IF
種交差性	交差種: Human 交差が予測される動物種: Mouse, Rat
免疫原	Synthetic peptide derived from internal sequence of human FGF22.
ポジティブ・コントロール	Human ovary tissue. Extracts from Jurkat cells and HT-29 cells. MCF-7 cells.

### 製品の特性

製品の状態	Liquid
保存方法	Shipped at 4°C. Upon delivery aliquot and store at -20°C. Avoid freeze / thaw cycles.
バッファー	Preservative: 0.02% Sodium Azide Constituents: 50% Glycerol, PBS (without Mg <sup>2+</sup> and Ca <sup>2+</sup> ), 150mM Sodium chloride, pH 7.4
精製度	Immunogen affinity purified
ポリ/モノ	ポリクローナル
アイソタイプ	IgG

### アプリケーション

Our [Abpromise guarantee](#) covers the use of **ab74860** in the following tested applications.

The application notes include recommended starting dilutions; optimal dilutions/concentrations should be determined by the end user.

アプリケーション	Abreviews	特記事項
ELISA		1/60000.
WB		1/500 - 1/1000. Predicted molecular weight: 19 kDa.
IHC-P		1/50 - 1/100.

アプリケーション

Abreviews

特記事項

ICC/IF

1/500 - 1/1000.

## ターゲット情報

機能

May be involved in hair development.

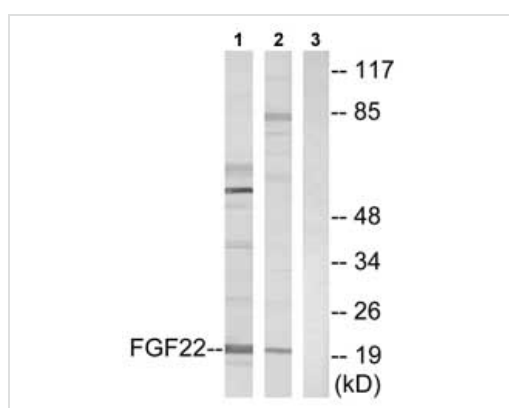
配列類似性

Belongs to the heparin-binding growth factors family.

細胞内局在

Secreted.

## 画像



Western blot - FGF22 antibody (ab74860)

**All lanes** : Anti-FGF22 antibody (ab74860) at 1/500 dilution

**Lane 1** : Extracts from Jurkat cells

**Lane 2** : Extracts from HT-29 cells

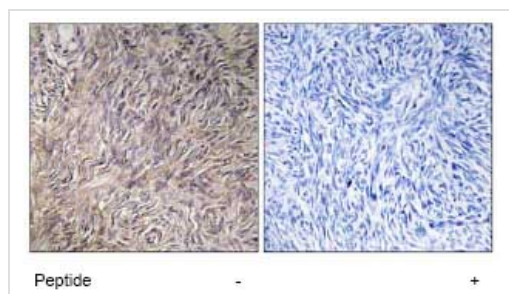
**Lane 3** : Extracts from Jurkat cells with immunising peptide at 5 µg

Lysates/proteins at 5 µg per lane.

**Predicted band size:** 19 kDa

**Observed band size:** 21 kDa

**Additional bands at:** 55 kDa, 85 kDa. We are unsure as to the identity of these extra bands.



Immunohistochemistry (Formalin/PFA-fixed paraffin-embedded sections) - FGF22 antibody (ab74860)

Immunohistochemistry analysis of FGF22 in paraffin-embedded human ovary tissue using ab74860, at 1/50 dilution, in the presence (right panel) or absence (left panel) of immunising peptide.



Immunofluorescence analysis of FGF22 in MCF-7 cells using ab74860, at 1/500 dilution, in the presence (right panel) or absence (left panel) of immunising peptide.

**Please note:** All products are "FOR RESEARCH USE ONLY AND ARE NOT INTENDED FOR DIAGNOSTIC OR THERAPEUTIC USE"

### Our Abpromise to you: Quality guaranteed and expert technical support

- Replacement or refund for products not performing as stated on the datasheet
- Valid for 12 months from date of delivery
- Response to your inquiry within 24 hours
- We provide support in Chinese, English, French, German, Japanese and Spanish
- Extensive multi-media technical resources to help you
- We investigate all quality concerns to ensure our products perform to the highest standards

If the product does not perform as described on this datasheet, we will offer a refund or replacement. For full details of the Abpromise, please visit <http://www.abcam.co.jp/abpromise> or contact our technical team.

### Terms and conditions

- Guarantee only valid for products bought direct from Abcam or one of our authorized distributors