


Product datasheet

Anti-FGF21 antibody ab66564

2 References [画像数 2](#)

製品の概要

製品名	Anti-FGF21 antibody
製品の詳細	Rabbit polyclonal to FGF21
アプリケーション	適用あり: WB, IHC-P 適用なし: ICC/IF
種交差性	交差種: Mouse, Human 交差が予測される動物種: Rat 
免疫原	Synthetic peptide derived from within residues 1 - 100 of Human FGF21. Immunogen の所有権に関して (Peptide available as ab66563 .)
ポジティブ・コントロール	This antibody gave a positive signal on Full length FGF-21 Recombinant Protein (Human)

製品の特性

製品の状態	Liquid
保存方法	Shipped at 4°C. Store at +4°C short term (1-2 weeks). Upon delivery aliquot. Store at -20°C or -80°C. Avoid freeze / thaw cycle.
バッファー	Preservative: 0.02% Sodium Azide Constituents: 1% BSA, PBS, pH 7.4
精製度	Immunogen affinity purified
ポリ/モノ	ポリクローナル
アイソタイプ	IgG

アプリケーション

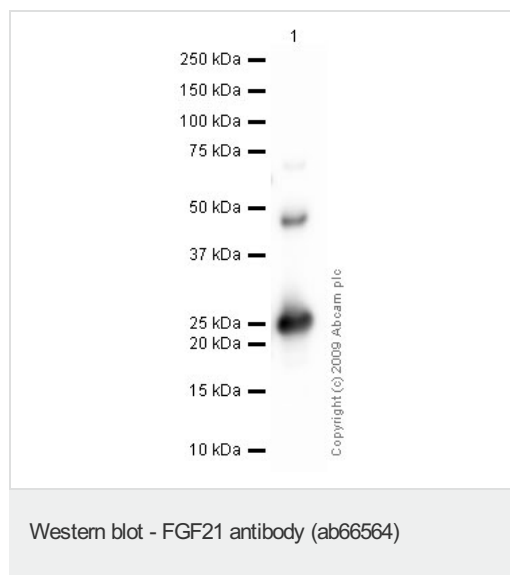
Our [Abpromise guarantee](#) covers the use of **ab66564** in the following tested applications.

The application notes include recommended starting dilutions; optimal dilutions/concentrations should be determined by the end user.

アプリケーション	Abreviews	特記事項
WB		Use a concentration of 1 µg/ml. Detects a band of approximately 24 kDa (predicted molecular weight: 22 kDa).

アプリケーション	Abreviews	特記事項
IHC-P		Use a concentration of 5 µg/ml.
追加情報		Is unsuitable for ICC/IF.
ターゲット情報		
機能		Stimulates glucose uptake in differentiated adipocytes via the induction of glucose transporter SLC2A1/GLUT1 expression (but not SLC2A4/GLUT4 expression). Activity requires the presence of KLB.
配列類似性		Belongs to the heparin-binding growth factors family.
細胞内局在		Secreted.

画像



Anti-FGF21 antibody (ab66564) at 1 µg/ml +
Recombinant human FGF21 protein
([ab54141](#)) at 0.1 µg

Secondary

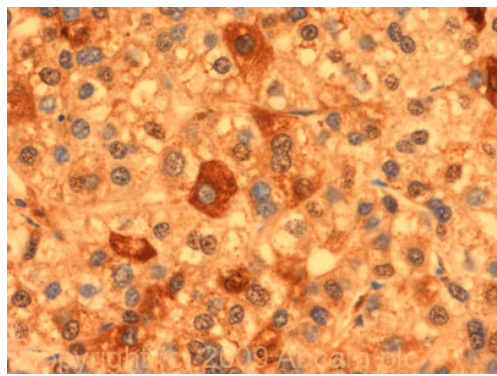
Goat polyclonal to Rabbit IgG - H&L - Pre-Adsorbed (HRP) at 1/3000 dilution

Performed under reducing conditions.

Predicted band size : 22 kDa

Observed band size : 24 kDa

Additional bands at : 45 kDa. We are unsure as to the identity of these extra bands.



Immunohistochemistry (Formalin/PFA-fixed paraffin-embedded sections) - FGF21 antibody (ab66564)

IHC image of FGF21 staining in Human Liver Cancer formalin fixed paraffin embedded tissue section, performed on a Leica Bond™ system using the standard protocol F. The section was pre-treated using heat mediated antigen retrieval with sodium citrate buffer (pH6, epitope retrieval solution 1) for 20 mins. The section was then incubated with ab66564, 5µg/ml, for 15 mins at room temperature and detected using an HRP conjugated compact polymer system. DAB was used as the chromogen. The section was then counterstained with haematoxylin and mounted with DPX.

For other IHC staining systems (automated and non-automated) customers should optimize variable parameters such as antigen retrieval conditions, primary antibody concentration and antibody incubation times.

Please note: All products are "FOR RESEARCH USE ONLY AND ARE NOT INTENDED FOR DIAGNOSTIC OR THERAPEUTIC USE"

Our Abpromise to you: Quality guaranteed and expert technical support

- Replacement or refund for products not performing as stated on the datasheet
- Valid for 12 months from date of delivery
- Response to your inquiry within 24 hours
- We provide support in Chinese, English, French, German, Japanese and Spanish
- Extensive multi-media technical resources to help you
- We investigate all quality concerns to ensure our products perform to the highest standards

If the product does not perform as described on this datasheet, we will offer a refund or replacement. For full details of the Abpromise, please visit <http://www.abcam.co.jp/abpromise> or contact our technical team.

Terms and conditions

- Guarantee only valid for products bought direct from Abcam or one of our authorized distributors